

WAAS CH <b>82640</b> <b>W02A</b>	APP CRS <b>015°</b>	Rwy Idg TDZE Apt Elev	<b>6011</b> <b>1359</b> <b>1359</b>
--	------------------------	-----------------------------	---

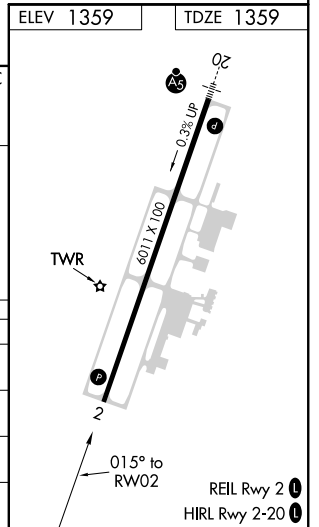
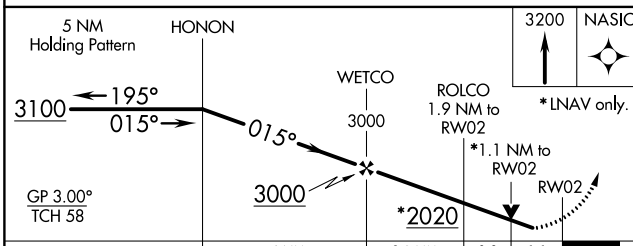
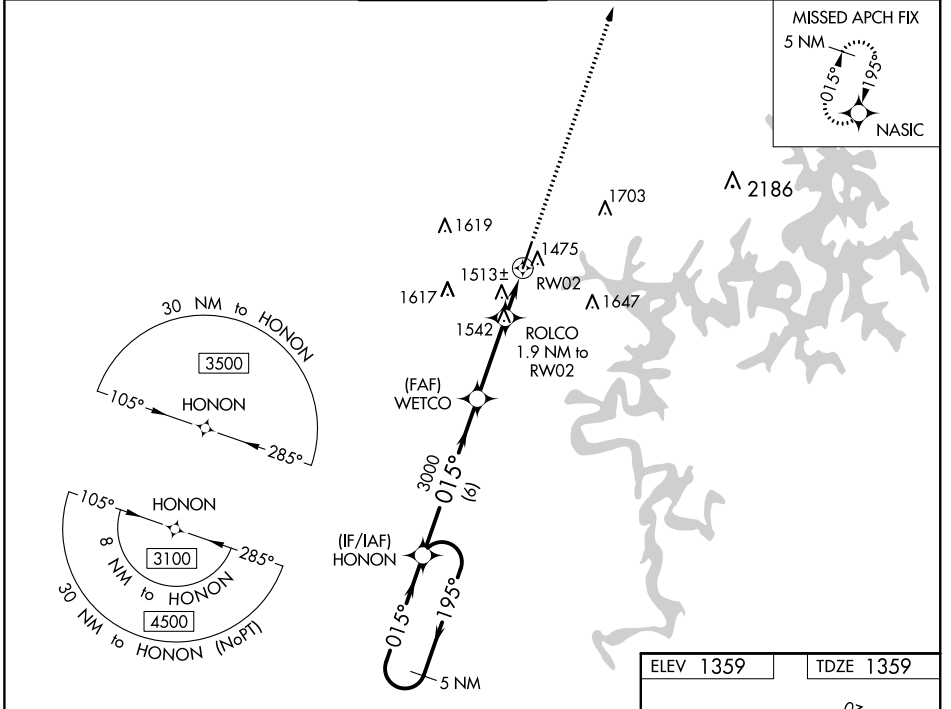
# RNAV (GPS) RWY 2

ROGERS EXEC-CARTER FLD (ROG)

▼ For uncompensated Baro-VNAV systems, LNAV/VNAV NA below -17°C (2°F) or above 54°C (130°F). Rwy 2 helicopter visibility reduction below ¾ SM NA.  
DME/DME RNP-0.3 NA.

MISSED APPROACH: Climb to 3200 direct NASIC and hold.

AWOS-3PT <b>134.375</b>	RAZORBACK APP CON* <b>126.6 305.2</b>	ROGERS TOWER* <b>119.375</b> (CTAF) <b>1</b>	GND CON <b>118.0</b>	CLNC DEL <b>121.75</b>	CLNC DEL <b>121.75</b> (When twr closed)
----------------------------	--	---	-------------------------	---------------------------	--



CATEGORY	A	B	C	D
LPV DA		1620-7/8	261 (300-7/8)	
LNAV/VNAV DA		1674-1	315 (400-1)	
LNAV MDA	1780-1	421 (500-1)	1780-1¼	421 (500-1¼)
CIRCLING	1820-1	461 (500-1)	2020-1¾ 661 (700-1¾)	2020-2 661 (700-2)

SC-1, 27 JAN 2022 to 24 FEB 2022

SC-1, 27 JAN 2022 to 24 FEB 2022