

WAAS CH 40003 W20A	APP CRS 195°	Rwy Idg TDZE Apt Elev	6011 1354 1359
--	------------------------	-----------------------------	---

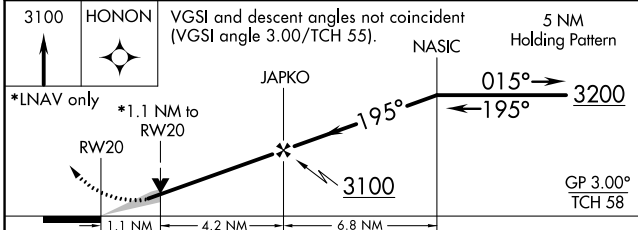
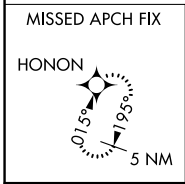
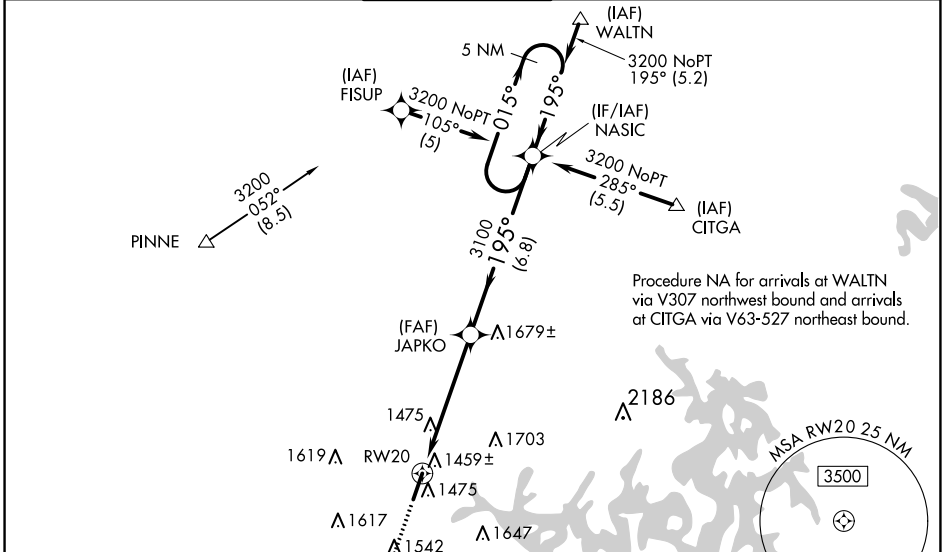
RNAV (GPS) RWY 20

ROGERS EXEC-CARTER FLD (ROG)

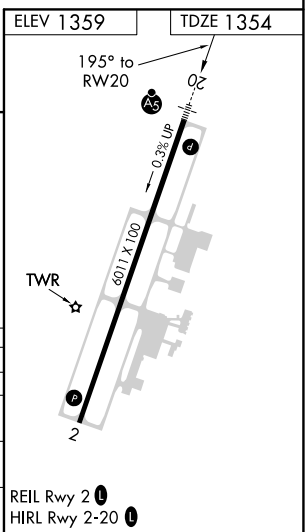
⚠ For inop MALS, increase LNAV Cat D to 1½. For uncompensated Baro-VNAV systems, LNAV/VNAV NA below -17°C (2°F) or above 46°C (114°F). DME/DME RNP-0.3 NA. If local altimeter setting not received, use Bentonville Muni altimeter setting and increase all DAs 22 feet and all MDAs 40 feet. Baro-VNAV and VDP NA when using Bentonville Muni altimeter setting.

MALS MISSED APPROACH: Climb to 3100 direct HONON and hold.

AWOS-3PT 134.375	RAZORBACK APP CON* 126.6 305.2	ROGERS TOWER* 119.375 (CTAF)	GND CON 118.0	CLNC DEL 121.75	CLNC DEL 121.75 (When twr closed)
----------------------------	--	--	-------------------------	---------------------------	--



CATEGORY	A	B	C	D
LPV DA		1604-½	250 (300-½)	
LNAV/VNAV DA		1730-¾	376 (400-¾)	
LNAV MDA	1740-½	386 (400-½)		1740-1 386 (400-1)
CIRCLING	1820-1	461 (500-1)	2020-1¾ 661 (700-1¾)	2020-2 661 (700-2)



SC-1, 27 JAN 2022 to 24 FEB 2022

SC-1, 27 JAN 2022 to 24 FEB 2022