

LOC/DME I-HWID 111.5 Chan 52	APP CRS 288°	Rwy Idg TDZE Apt Elev	5018 50 52
--	------------------------	-----------------------------	---------------------------------------

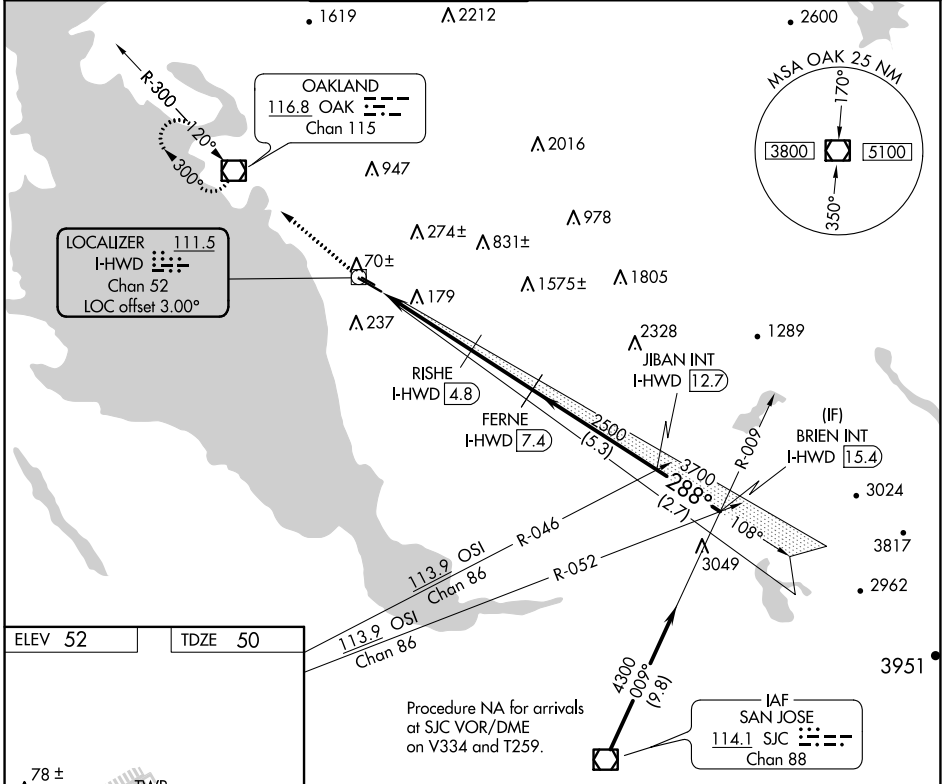
LOC/DME RWY 28L

HAYWARD EXEC (HWD)

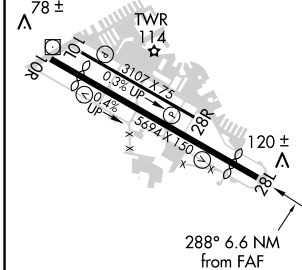
⚠ Circling NA north of Rwy 10L-28R. When local altimeter setting not received, use Oakland altimeter setting: increase all MDA 20 feet and Circling Cat D visibility ¼ SM. Rwy 28L helicopter visibility reduction below ¾ SM NA.

MISSED APPROACH: Climb to 2100 direct OAK VOR/DME and hold.

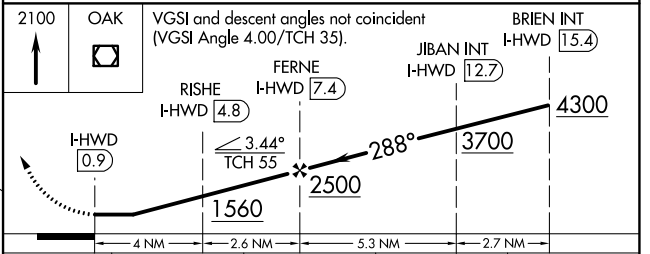
ATIS 126.7	NORCAL APP CON 124.4 351.8	HAYWARD TOWER * 120.2 (CTAF) 0 257.8	GND CON 121.4	CLNC DEL 128.05	UNICOM 122.95
----------------------	--------------------------------------	---	-------------------------	---------------------------	-------------------------



ELEV 52	TDZE 50
---------	---------



MIRL Rwy 10R-28L
MIRL Rwy 10L-28R
REIL Rws 10R and 28L



CATEGORY	A	B	C	D
S-28L	500-1	450 (500-1)	500-1 3/8	450 (500-1 3/8)
CIRCLING	540-1	488 (500-1)	540-1 1/2 488 (500-1 1/2)	920-2 3/4 868 (900-2 3/4)

SW-2, 27 JAN 2022 to 24 FEB 2022

SW-2, 27 JAN 2022 to 24 FEB 2022