

WAAS CH 40330 W28A	APP CRS 285°	Rwy Idg 5018 TDZE 50 Apt Elev 52
--	------------------------	---

RNAV (GPS) RWY 28L

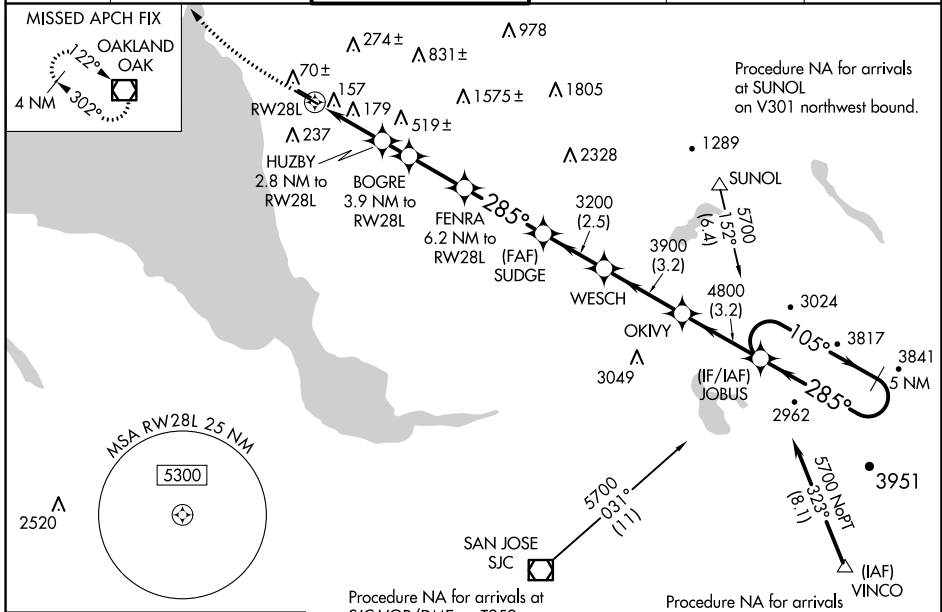
HAYWARD EXEC(HWD)

RNP APCH.

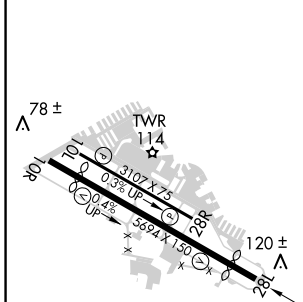
Baro-VNAV NA. When local altimeter setting not received, use Oakland altimeter setting: increase all DA/MDA 20 feet, and LNAV/VNAV all Cats and LNAV Cat C/D visibility 1/8 SM and Circling Cat D visibility 1/4 SM. Circling NA north of Rwy 10L-28R. Rwy 28L: Helicopter visibility reduction below 3/4 SM NA.

MISSED APPROACH: Climb to 600 then dimbing right turn to 2100 direct OAK VOR/DME and hold.

ATIS 126.7	NORCAL APP CON 124.4 351.8	HAYWARD TOWER * 120.2 (CTAF) 257.8	GND CON 121.4	CLNC DEL 128.05	UNICOM 122.95
----------------------	--------------------------------------	--	-------------------------	---------------------------	-------------------------



ELEV 52	TDZE 50
---------	---------



MIRL Rwy 10R-28L	MIRL Rwy 10L-28R	REIL Rwy 10R and 28L
------------------	------------------	----------------------

600	2100	OAK	VGSI and RNAV glidepath not coincident (VGSI Angle 4.00/TCH 35).
*LNAV only.			
78 ±	114	120 ±	120 ±
100*	1360*	2120*	3200
2.8	1.1 NM	2.3 NM	3.3 NM
2.5 NM	3.2 NM	3.2 NM	
CATEGORY	A	B	C
LPV DA	348-1 298 (300-1)		
LNAV/VNAV DA	400-1 350 (400-1 1/2)		
LNAV MDA	460-1	410 (500-1)	460-1 1/2 410 (500-1 1/2)
CIRCLING	540-1	488 (500-1)	540-1 1/2 488 (500-1 1/2) 920-2 3/4 868 (900-2 3/4)

SW-2, 27 JAN 2022 to 24 FEB 2022

SW-2, 27 JAN 2022 to 24 FEB 2022