

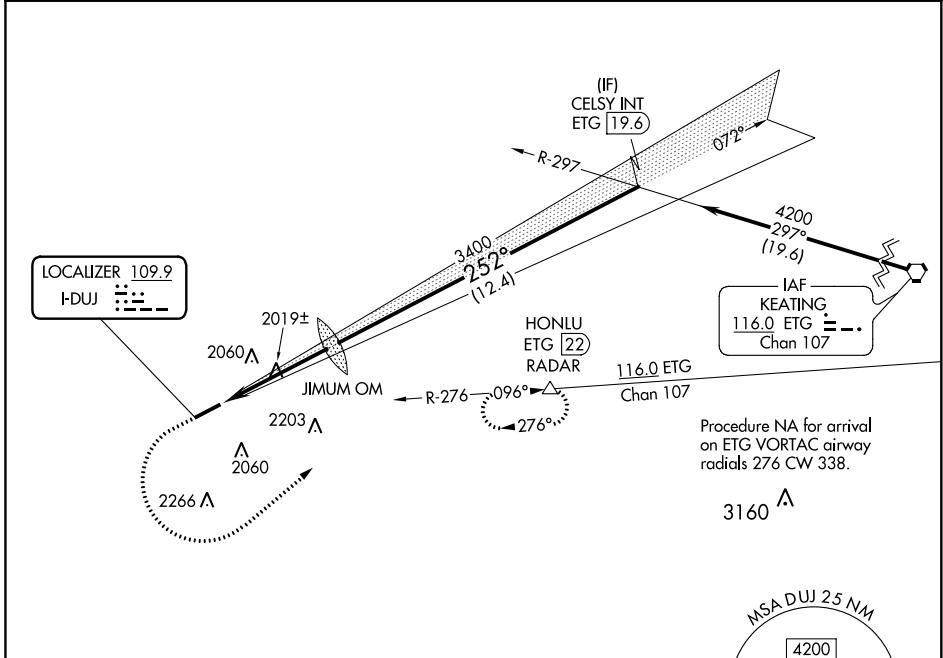
LOC I-DUJ 109.9	APP CRS 252°	Rwy Idg TDZE Apt Elev	5503 1817 1817
---------------------------	------------------------	-----------------------------	---

ILS or LOC RWY 25

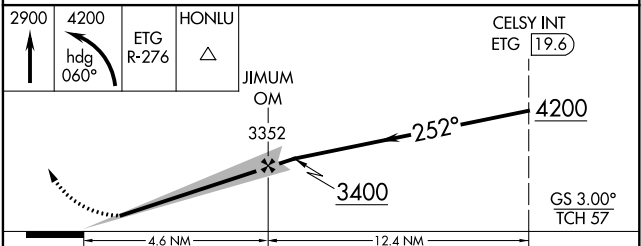
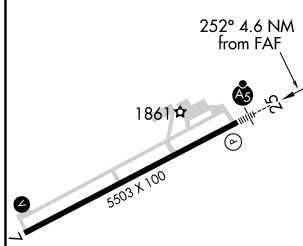
DUBOIS RGNL (DUJ)

<p>⚠ Circling NA for Cat D south of Rwy 7-25. For inop ALS, increase S-LOC 25 Cats C/D visibility to 1$\frac{1}{2}$ SM.</p>	<p>MALSRL </p>	<p>MISSED APPROACH: Climb to 2900 then climbing left turn to 4200 on heading 060° and ETG VORTAC R-276 to HONLU/ETG 22 DME/RADAR and hold.</p>
---	--------------------	--

ASOS 119.025	CLEVELAND CENTER 126.725 291.65	UNICOM 123.0 (CTAF) ①
------------------------	---	--



ELEV 1817	D	TDZE 1817
-----------	----------	-----------



CATEGORY	A	B	C	D
S-ILS 25	2017- $\frac{1}{2}$ 200 (200- $\frac{1}{2}$)			
S-LOC 25	2280- $\frac{1}{2}$ 463 (500- $\frac{1}{2}$)	2280-1 463 (500-1)		
C CIRCLING	2320-1 503 (600-1)	2360-1 543 (600-1)	2380-1 $\frac{1}{2}$ 563 (600- $\frac{1}{2}$)	2400-2 583 (600-2)

FAF to MAP 4.6 NM					
Knots	60	90	120	150	180
Min:Sec	4:36	3:04	2:18	1:50	1:32

NE-4, 27 JAN 2022 to 24 FEB 2022

NE-4, 27 JAN 2022 to 24 FEB 2022