

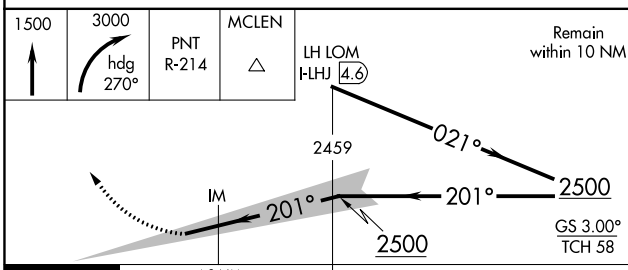
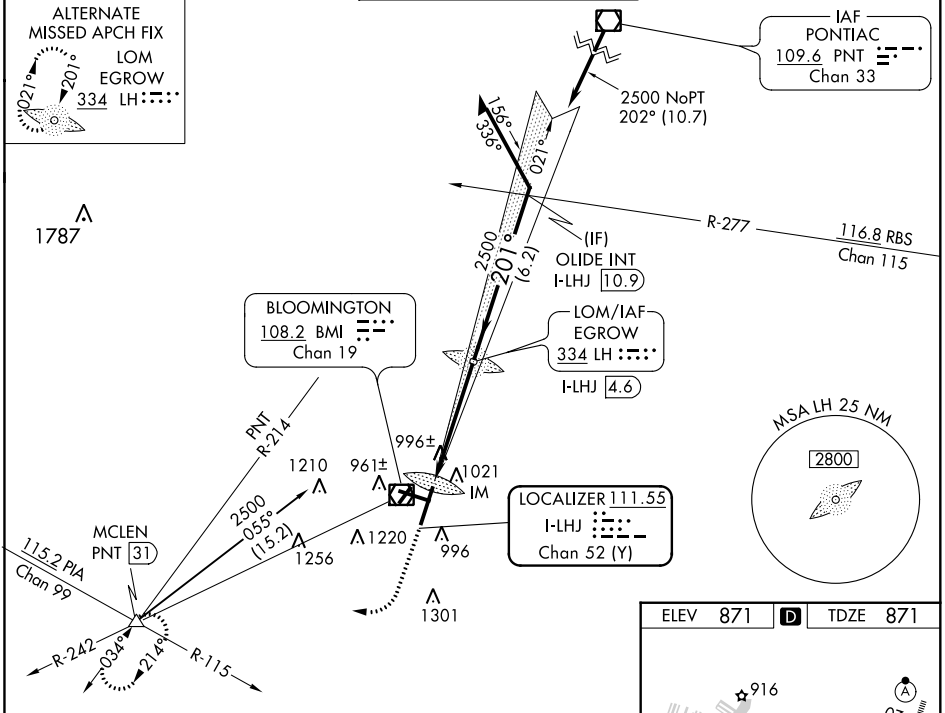
LOC/DME I-LHJ 111.55 Chan 52 (Y)	APP CRS 201°	Rwy Idg TDZE Apt Elev	8000 871 871
--	------------------------	-----------------------------	---

ILS RWY 20 (CAT II)

CENTRAL IL RGNL/BLOOMINGTON-NORMAL (BMI)

<p>Procedure NA when tower closed.</p>	<p>ALSF-2</p>	<p>MISSED APPROACH: Climb to 1500 then climbing right turn to 3000 on heading 270° and PNT VOR/DME R-214 to MCLN INT/PNT 31 DME and hold.</p>
--	---------------	---

ATIS 135.35	PEORIA APP CON 128.725 256.9	BLOOMINGTON TOWER ★ 124.6 (CTAF) 269.575	GND CON 121.65	UNICOM 122.95
-----------------------	--	--	--------------------------	-------------------------



ELEV 871	TDZE 871
----------	----------

916

6525 X 150

129

917±

8000 X 150

TWR 972

CATEGORY	A	B	C	D
S-ILS-20	RA 122/12 100 DA 971			
CATEGORY II ILS - SPECIAL AIRCREW & AIRCRAFT CERTIFICATION REQUIRED				

EC-3, 27 JAN 2022 to 24 FEB 2022

EC-3, 27 JAN 2022 to 24 FEB 2022