

LOC/DME I-TXN 111.55 Chan 52 (Y)	APP CRS 021°	Rwy Idg 8000 TDZE 867 Apt Elev 871
--	------------------------	---

ILS or LOC RWY 2

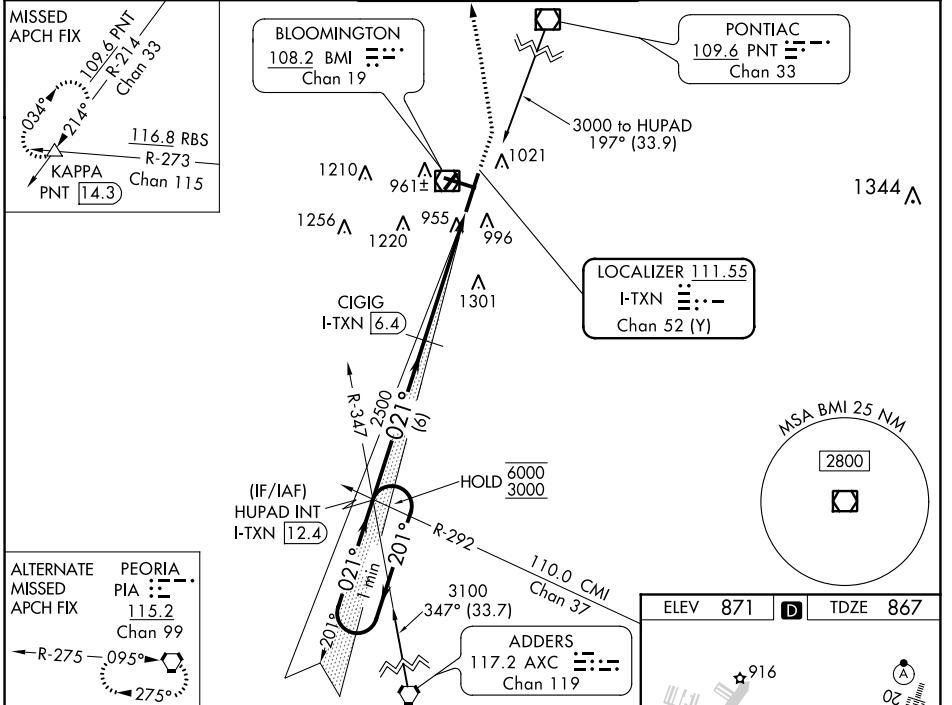
CENTRAL IL RGNL/BLOOMINGTON-NORMAL (BMI)

DME required for LOC only.

Autopilot coupled approach NA below 1100. VDP NA with General Downng-Peoria Int altimeter setting. Inop table does not apply to S-ILS 2. For inop ALS, increase S-LOC 2 Cat A/B visibility to RVR 5500 and Cat C/D to RVR 6000. When local altimeter setting not received, use General Downng-Peoria Int altimeter setting and increase all DA 116 feet and all MDA 120 feet, and S-LOC 2 Cat C/D visibility to RVR 5500. Circling Cat C/D visibility ¼ SM. For inop ALS when using General Downng-Peoria Int altimeter setting, increase S-ILS 2 all Cats visibility to RVR 4500, S-LOC 2 Cat C/D visibility to 1½ SM.

ATIS 135.35	PEORIA APP CON 128.725 256.9	BLOOMINGTON TOWER ★ 124.6 (CTAF) 0 269.575	GND CON 121.65	UNICOM 122.95
-----------------------	--	--	--------------------------	-------------------------

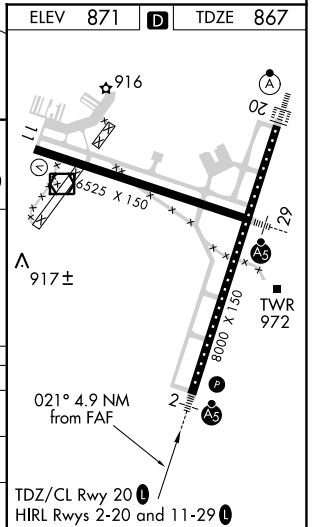
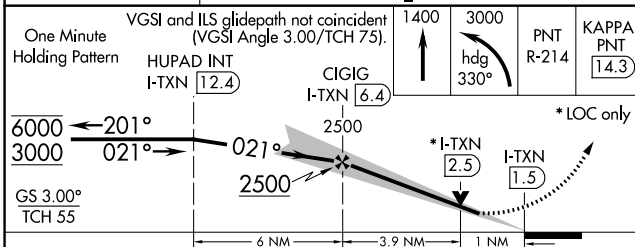
MISSED APPROACH:
Climb to 1400 then climbing left turn to 3000 on heading 330° and on PNT VOR/DME R-214 to KAPPA INT/PNT 14.3 DME and hold.



ALTERNATE MISSED APCH FIX

PEORIA PIA 115.2 Chan 99

R-275 095°



CATEGORY	A	B	C	D
S-ILS 2		1067/40	200 (200-¾)	
S-LOC 2		1260/40	393 (400-¾)	
CIRCLING	1340-1 469 (500-1)		1620-2¼ 749 (800-2¼)	1620-2½ 749 (800-2½)

ILS or LOC RWY 2