

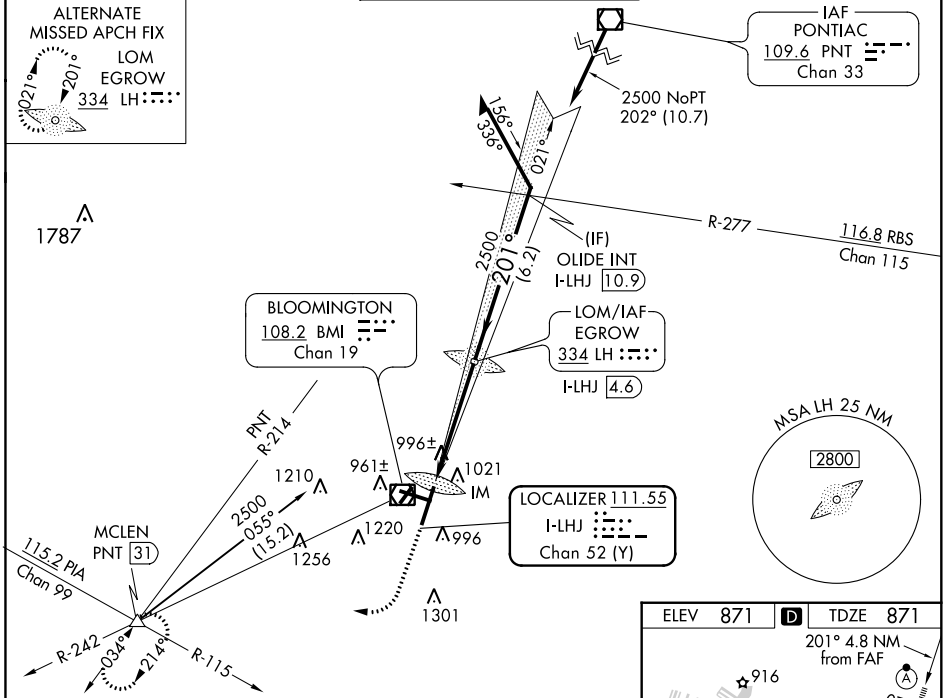
LOC/DME I-LHJ <b>111.55</b> Chan <b>52 (Y)</b>	APP CRS <b>201°</b>	Rwy Idg <b>8000</b> TDZE <b>871</b> Apt Elev <b>871</b>
------------------------------------------------------	------------------------	---------------------------------------------------------------

# ILS or LOC RWY 20

CENTRAL IL RGNL/BLOOMINGTON-NORMAL (BMI)

<p><b>⚠</b> VDP NA when using General Downning-Peoria Intl altimeter setting. When local altimeter setting not received, use General Downning-Peoria Intl altimeter setting: increase all DA 116 feet and all MDA 120 feet; increase S-ILS all Cats visibility to RVR 2400, S-LOC Cat C and D visibility to RVR 5500, and Circling Cat C and D visibility ¼ mile. For inoperative ALSF-2 when using General Downning-Peoria Intl altimeter setting increase ILS all Cts visibility to RVR 5000.</p>	<p>ALSF-2</p>	<p>MISSED APPROACH: Climb to 1500 then climbing right turn to 3000 on heading 270° and PNT VOR/DME R-214 to MCLEN INT/PNT 31 DME and hold.</p>

ATIS <b>135.35</b>	PEORIA APP CON <b>128.725 256.9</b>	BLOOMINGTON TOWER * <b>124.6 (CTAF) 269.575</b>	GND CON <b>121.65</b>	UNICOM <b>122.95</b>
-----------------------	----------------------------------------	----------------------------------------------------	--------------------------	-------------------------



1500	3000	MCLEN	LH LOM
↑	hdg 270°	PNT R-214	I-LHJ 4.6
*LOC only		△	

2459

021°

2500

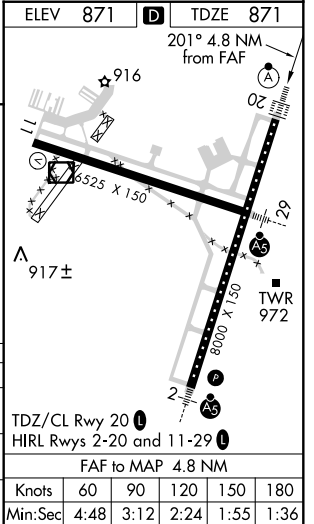
201°

2500

GS 3.00°  
TCH 58

0.2 0.9 3.7 NM

Remain within 10 NM



CATEGORY	A	B	C	D
S-ILS 20		1071/18	200 (200-½)	
S-LOC 20	1260/24	389 (400-½)	1260/35	389 (400-¾)
<b>C</b> CIRCLING	1340-1	469 (500-1)	1620-2¼ 749 (800-2¼)	1620-2½ 749 (800-2½)

TDZ/CL Rwy 20	1				
HRL Rws 2-20 and 11-29	1				
FAF to MAP	4.8 NM				
Knots	60	90	120	150	180
Min:Sec	4:48	3:12	2:24	1:55	1:36

EC-3, 27 JAN 2022 to 24 FEB 2022

EC-3, 27 JAN 2022 to 24 FEB 2022