

LOC/DME I-BMI 110.95 Chan 46 (Y)	APP CRS 111°	Rwy Idg TDZE Apt Elev	6525 871 871
--	------------------------	-----------------------------	---

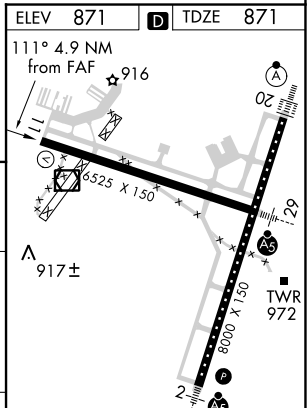
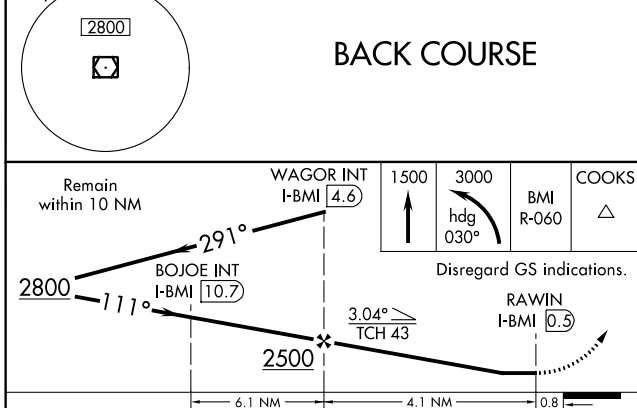
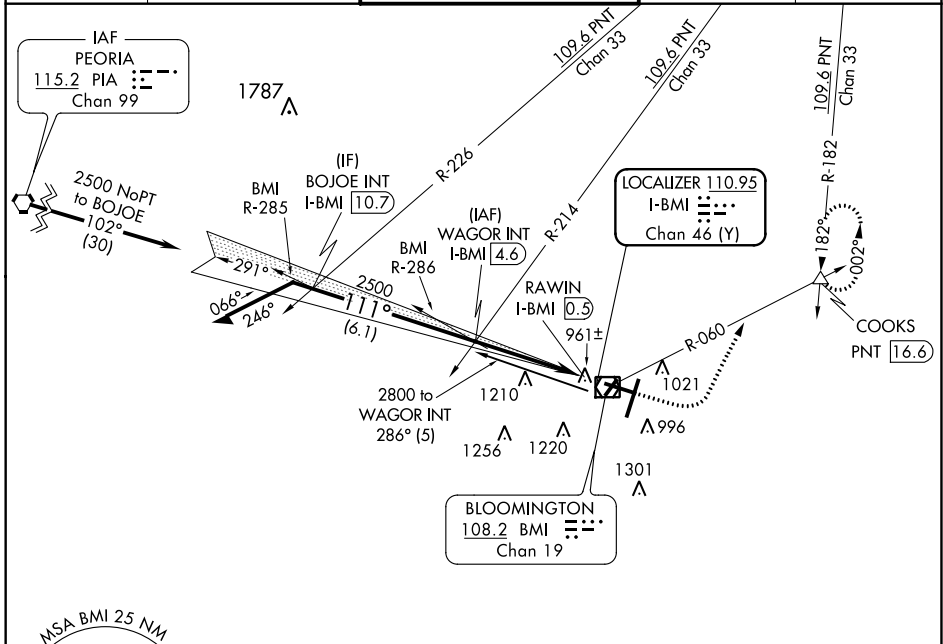
LOC BC RWY 11

CENTRAL IL RGNL/BLOOMINGTON-NORMAL (BMI)

⚠ When local altimeter setting not received, use General Downing-Peoria Intl altimeter setting: increase all MDA 120 feet, increase S-11 and Circling Cats C/D visibility 1/4 mile.

MISSED APPROACH: Climb to 1500 then climbing left turn to 3000 on heading 030° and BMI VOR/DME R-060 to COOKS INT/PNT 16.6 DME and hold.

ATIS 135.35	PEORIA APP CON 128.725 256.9	BLOOMINGTON TOWER ★ 124.6 (CTAF) 269.575	GND CON 121.65	UNICOM 122.95
-----------------------	--	--	--------------------------	-------------------------



CATEGORY	A	B	C	D
S-11	1260-1	389 (400-1)	1260-1½	389 (400-1½)
C CIRCLING	1340-1	469 (500-1)	1620-2¼ 749 (800-2¼)	1620-2½ 749 (800-2½)

TDZ/CL Rwy 20	HIRL Rwy 2-20 and 11-29	FAF to MAP 4.1 NM			
Knots	60	90	120	150	180
Min:Sec	4:06	2:44	2:03	1:38	1:22

LOC BC RWY 11

EC-3, 27 JAN 2022 to 24 FEB 2022

EC-3, 27 JAN 2022 to 24 FEB 2022