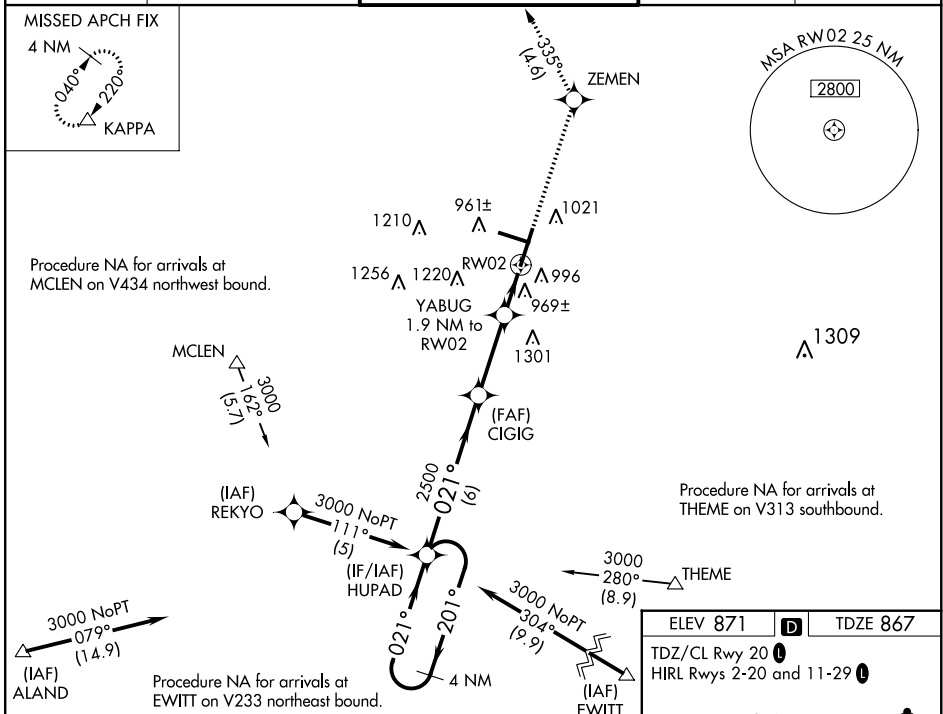


WAAS CH 56303 W02A	APP CRS 021°	Rwy Idg 8000 TDZE 867 Apt Elev 871
--	------------------------	---

RNAV (GPS) RWY 2

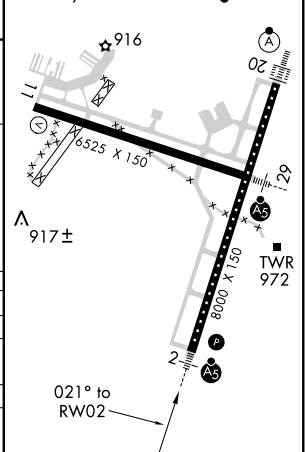
CENTRAL IL RGNL/BLOOMINGTON-NORMAL (BMI)

RNP APCH: For uncompensated Baro-VNAV systems, LNAV/VNAV NA below -16°C or above 54°C. Baro-VNAV and VDP NA when using General Downing-Peoria Intl altimeter setting. When local altimeter setting not received, use General Downing-Peoria Intl altimeter setting: increase all DA 116 feet and all MDA 120 feet; increase LPV and LNAV/VNAV all Cnts visibility 1/2 SM, LNAV Cnts C/D visibility 3/8 SM, and Circling all Cnts visibility 1/4 SM. Inop table does not apply.		MALSR AS	MISSED APPROACH: Climb to 3000 direct ZEMEN then on track 335° to KAPPA and hold.
ATIS 135.35	PEORIA APP CON 128.725 256.9	BLOOMINGTON TOWER * 124.6 (CTAF) 269.575	GND CON 121.65
		UNICOM 122.95	



ELEV 871	D	TDZE 867
----------	----------	----------

TDZ/CL Rwy 20
HIRL Rws 2-20 and 11-29



GP 3.00° TCH 55	3000	201°	021°	021°	2500	1520	3000	ZEMEN	tr 335°	KAPPA
CATEGORY	A	B	C	D						
LPV DA		1214-1 1/4	347 (400-1 1/4)							
LNAV/VNAV DA		1269-1 1/4	402 (400-1 1/4)							
LNAV MDA	1220-1	353 (400-1)	1220-1 1/4	353 (400-1 1/4)						
C CIRCLING	1340-1	469 (500-1)	1620-2 1/4	1620-2 1/2	749 (800-2 1/4)	749 (800-2 1/2)				

RNAV (GPS) RWY 2

EC-3, 27 JAN 2022 to 24 FEB 2022

EC-3, 27 JAN 2022 to 24 FEB 2022