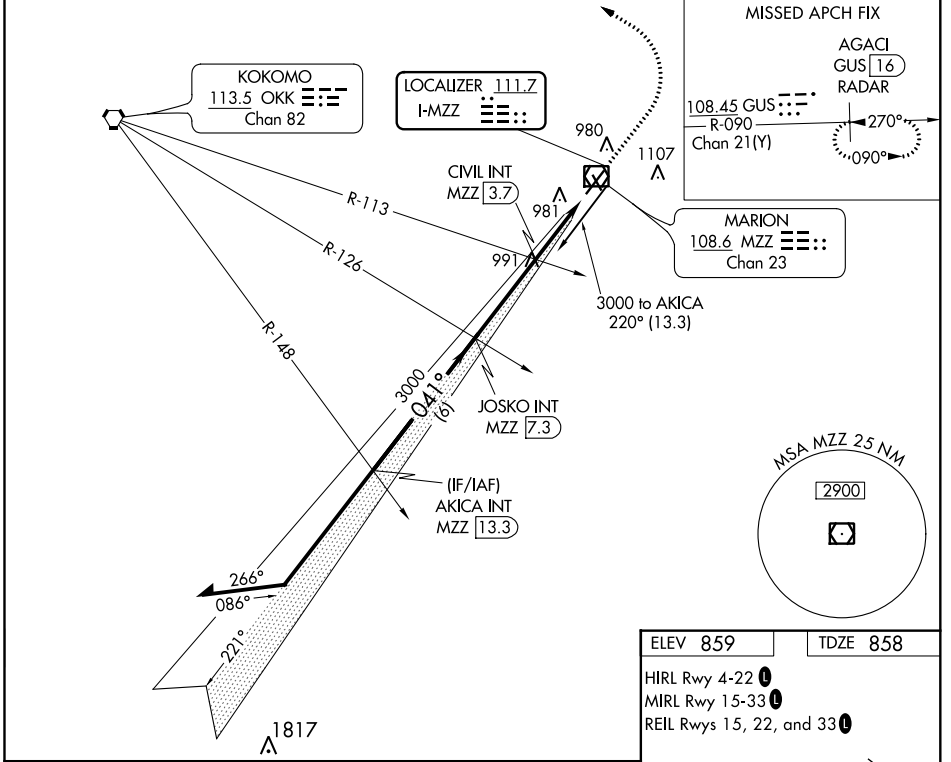


LOC I-MZZ <b>111.7</b>	APP CRS <b>041°</b>	Rwy Idg TDZE Apt Elev	<b>6011</b> <b>858</b> <b>859</b>
---------------------------	------------------------	-----------------------------	---

# ILS or LOC RWY 4

MARION MUNI - MCKINNEY FLD (MZZ)

DME required.		MALSR 	MISSED APPROACH: Climb to 2500 then climbing left turn to 4000 on heading 320° to intercept GUS VORTAC R-090 to AGACI/GUS VORTAC 16 DME/RADAR and hold.
DME from MZZ VOR/DME. Simultaneous reception of I-MZZ and MZZ DME required.			
AWOS-3 <b>108.6</b>	GRISSOM APP CON ★ <b>121.05 338,275</b>	CLNC DEL <b>120.0</b>	UNICOM <b>122.7</b> (CTAF) <b>0</b>



EC-2, 27 JAN 2022 to 24 FEB 2022

EC-2, 27 JAN 2022 to 24 FEB 2022

ELEV 859	TDZE 858
HIRL Rwy 4-22 <b>0</b>	MIRL Rwy 15-33 <b>0</b>
REIL Rws 15, 22, and 33 <b>0</b>	

FAF to MAP 6.6 NM					
Knots	60	90	120	150	180
Min:Sec	6:34	4:22	3:17	2:37	2:11

Remain within 10 NM AKICA INT MZZ <b>13.3</b> JOSKO INT MZZ <b>7.3</b> CIVIL INT MZZ <b>3.7</b> *MZZ <b>1.8</b>	2500	4000	GUS R-090	AGACI GUS <b>16</b> RADAR
	*LOC only.			
3000 - 041° - 041° GS 3.00° TCH 52	3000	*1860		
	6 NM	3.6 NM	1.9 NM	1.1 NM
CATEGORY	A	B	C	D
S-ILS 4		1058-½	200 (200-½)	
S-LOC 4		1260-½	402 (500-½)	
<b>C</b> CIRCLING	1300-1 441 (500-1)	1320-1 461 (500-1)	1400-1½ 541 (600-1½)	1500-2 641 (700-2)