

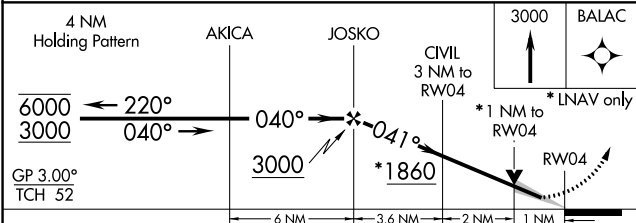
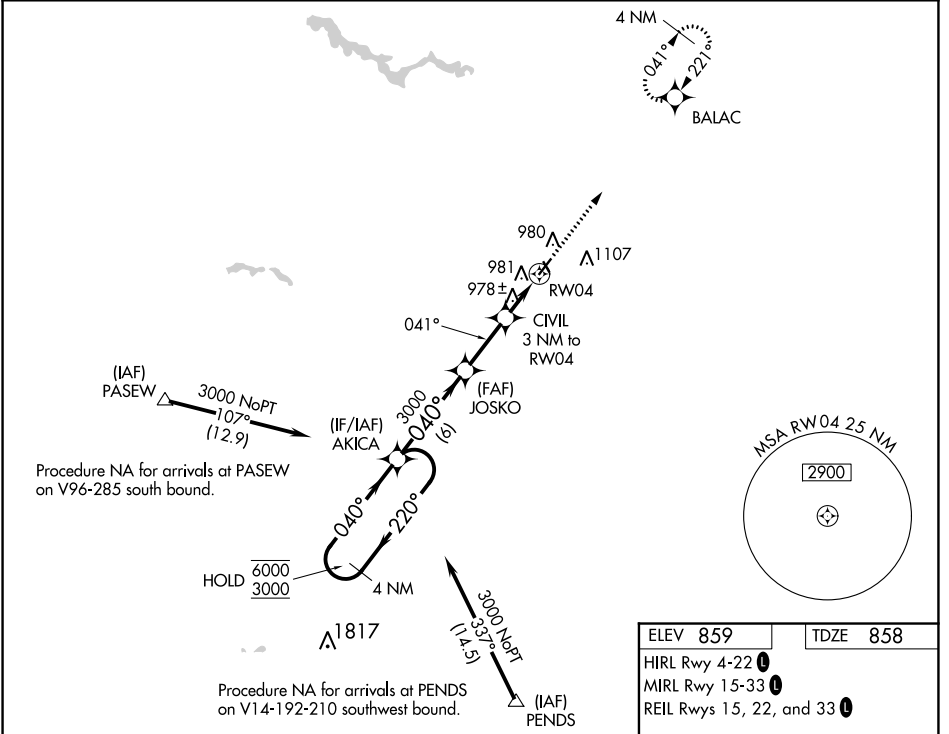
WAAS CH 60906 W04A	APP CRS 041°	Rwy Idg TDZE Apt Elev	6011 858 859
--	------------------------	-----------------------------	---

RNAV (GPS) RWY 4

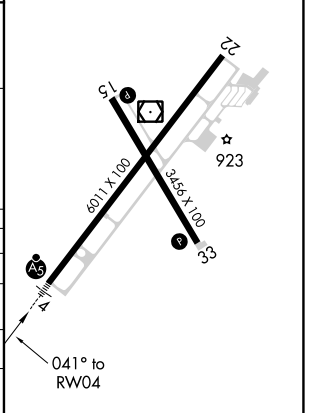
MARION MUNI - MCKINNEY FLD (MZZ)

RNP APCH. ▼ For uncompensated Baro-VNAV systems, LNAV/VNAV NA below -16°C or above 54°C.		MALSR 	MISSED APPROACH: Climb to 3000 direct BALAC and hold.
--	--	-----------	---

AWOS-3 108.6	GRISSOM APP CON ★ 121.05 338.275	CLNC DEL 120.0	UNICOM 122.7 (CTAF) 0
------------------------	--	--------------------------	---------------------------------



ELEV 859	TDZE 858
HIRL Rwy 4-22 0	MIRL Rwy 15-33 0
REIL Rwys 15, 22, and 33 0	



CATEGORY	A	B	C	D
LPV DA		1058-1/2	200 (200-1/2)	
LNAV/VNAV DA		1247-5/8	389 (400-3/8)	
LNAV MDA	1240-1/2	382 (400-1/2)	1240-5/8	382 (400-5/8)
CIRCLING	1300-1 441 (500-1)	1320-1 461 (500-1)	1400-1 1/2 541 (600-1 1/2)	1500-2 641 (700-2)

EC-2, 27 JAN 2022 to 24 FEB 2022

EC-2, 27 JAN 2022 to 24 FEB 2022