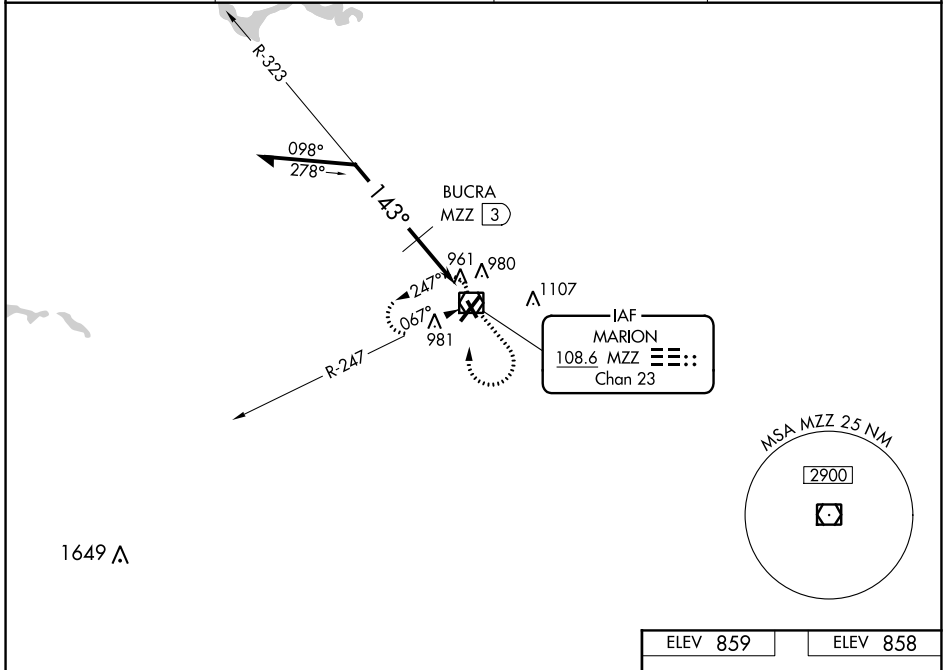


VOR/DME MZZ 108.6 Chan 23	APP CRS 143°	Rwy Idg 3456 TDZE 858 Apt Elev 859
---	------------------------	---

VOR RWY 15

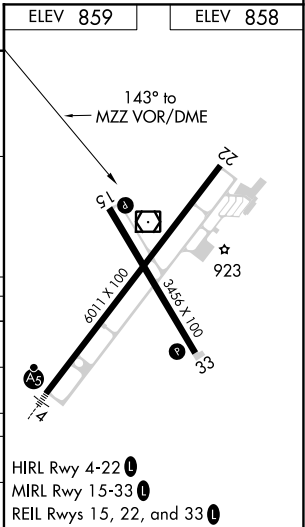
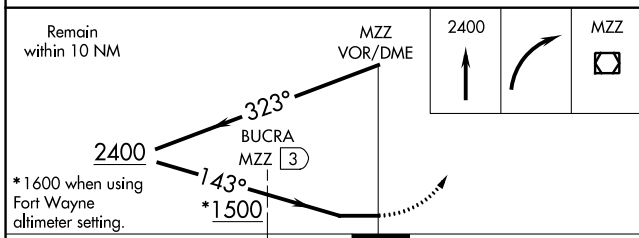
MARION MUNI - MCKINNEY FLD (MZZ)

<p>▼ When local altimeter setting not received, use Fort Wayne Intl altimeter setting and increase all MDA 100 feet, increase S-15 Cat B/C/D visibility $\frac{1}{4}$ SM, increase Circling Cat B/C/D visibility $\frac{1}{2}$ SM; BUCRA fix minimums: increase S-15 Cat C/D visibility $\frac{3}{8}$ SM, increase Circling Cat C/D visibility $\frac{1}{2}$ SM. Rwy 15 helicopter visibility reduction below $\frac{3}{4}$ SM NA.</p>		<p>MISSED APPROACH: Climb to 2400 then right turn direct MZZ VOR/DME and hold.</p>	
AWOS-3 108.6	GRISSOM APP CON ★ 121.05 338.275	CLNC DEL 120.0	UNICOM 122.7 (CTAF) 0



EC-2, 27 JAN 2022 to 24 FEB 2022

EC-2, 27 JAN 2022 to 24 FEB 2022



ELEV 859		ELEV 858		
<p>Remain within 10 NM</p> <p>MZZ VOR/DME</p> <p>2400</p> <p>BUCRA MZZ 3</p> <p>*1500</p> <p>323°</p> <p>143°</p> <p>2.9 NM</p> <p>0.1</p>				
CATEGORY	A	B	C	D
S-15	1500-1	642 (700-1)	1500-1 $\frac{3}{4}$ 642 (700-1 $\frac{3}{4}$)	1500-2 642 (700-2)
C CIRCLING	1500-1	641 (700-1)	1500-1 $\frac{7}{8}$ 641 (700-1 $\frac{7}{8}$)	1500-2 641 (700-2)
BUCRA FIX MINIMUMS				
S-15	1240-1 382 (400-1)		1240-1 $\frac{1}{4}$ 382 (400-1 $\frac{1}{4}$)	
C CIRCLING	1300-1 441 (500-1)	1320-1 461 (500-1)	1400-1 $\frac{1}{2}$ 541 (600-1 $\frac{1}{2}$)	1500-2 641 (700-2)

HIRL Rwy 4-22 0
MIRL Rwy 15-33 0
REIL Rwy 15, 22, and 33 0