

LOC I-HHR	APP CRS	Rwy Idg	<b>4193</b>
<b>109.1</b>	<b>253°</b>	TDZE	<b>63</b>
		Apt Elev	<b>66</b>

# LOC RWY 25

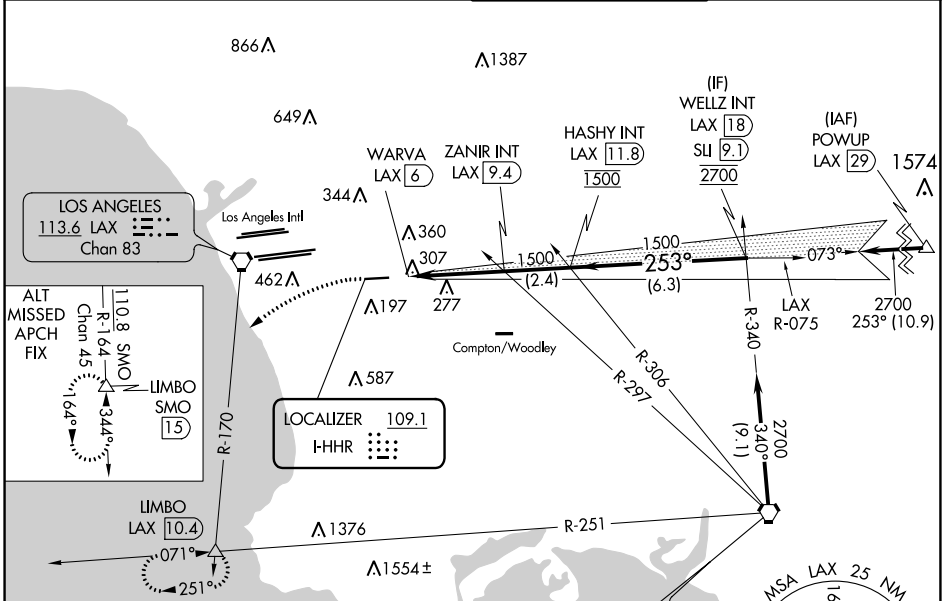
JACK NORTHROP FLD/HAWTHORNE MUNI (HHR)

**⚠** Inop table does not apply. Rwy 25 helicopter visibility reduction below 1 SM NA. Circling Rwy 7 NA at night. When local altimeter setting not received, use Los Angeles Intl altimeter setting. Simultaneous approach authorized with LAX 25L/R 24L/R. Circling NA north of Rwy 7-25. DME from LAX VORTAC. Simultaneous reception of I-HHR and LAX DME required.

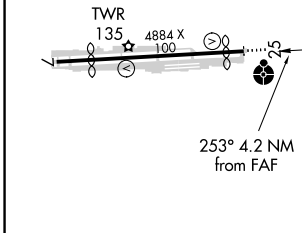
**ODALS**

**MISSED APPROACH:** Climbing left turn to 3000 on heading 210° and LAX VORTAC R-170 to LIMBO INT/LAX 10.4 DME and hold.

ATIS <b>118.4</b>	SOCAL APP CON <b>124.9 269.0</b>	HAWTHORNE TOWER* <b>121.1(CTAF) 257.8</b>	GND CON <b>125.1</b>
----------------------	-------------------------------------	--	-------------------------



ELEV 66	<b>D</b>	TDZE 63
---------	----------	---------



REIL Rwy 25  
MIRL Rwy 7-25

FAF to MAP 3.4 NM

Knots	60	90	120	150	180
Min:Sec	3:24	2:16	1:42	1:22	1:08

Procedure NA for arrivals at SLI VORTAC on V459-597 southeast bound.

3000	LAX R-170	LIMBO	VGSI and descent angles not coincident (VGSI Angle 3.50/TCH 26).	WELLY INT LAX 18
hdg 210°				
LOC unusable from MAP inbound.	ZANIR INT LAX 9.4	HASHY INT LAX 11.8		2700
	WARVA LAX 6	3.10 TCH 45		
		1500	1500	
		0.8 NM	3.4 NM	2.4 NM
				6.3 NM
CATEGORY	A	B	C	D
S-25	580-1	517 (600-1)	580-1½	517 (600-1½)
<b>C</b> CIRCLING	620-1	554 (600-1)	780-2	780-2¼
			714 (800-2)	714 (800-2¼)

SW-3, 27 JAN 2022 to 24 FEB 2022

SW-3, 27 JAN 2022 to 24 FEB 2022