

VORTAC LAX	APP CRS	Rwy Idg	4193
113.6	261°	TDZE	63
Chan 83		Apt Elev	66

VOR RWY 25

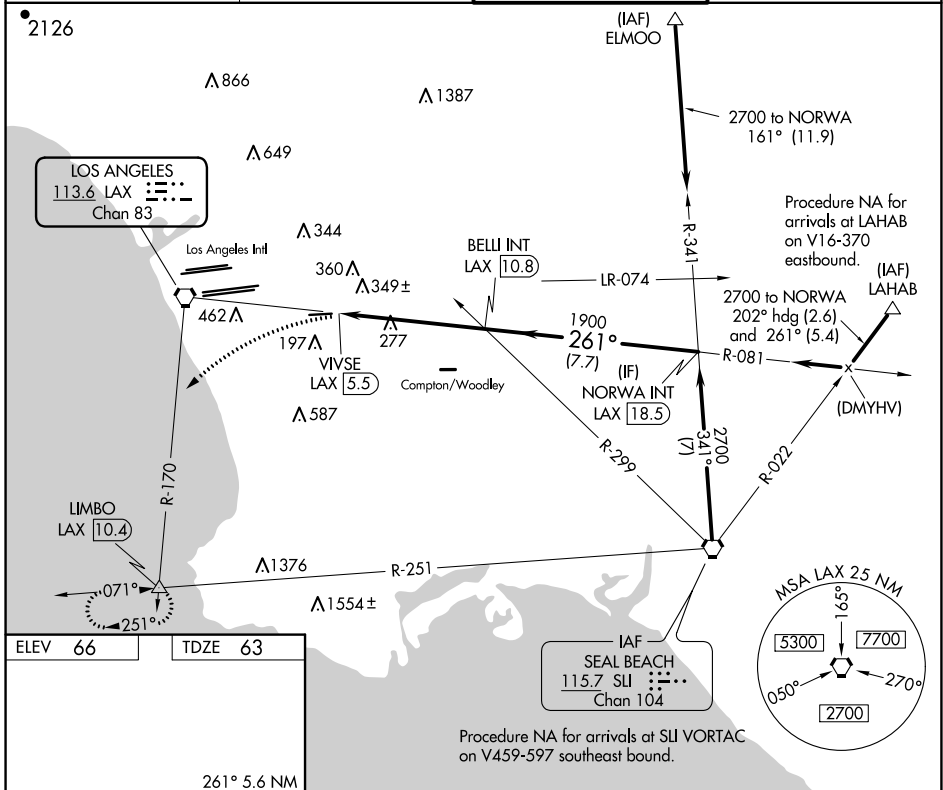
JACK NORTHROP FLD/HAWTHORNE MUNI (HHR)

Inoperative table does not apply. Circling NA north of Rwy 7-25. Rwy 25 helicopter visibility reduction below 1 SM NA. Circling NA when control tower closed. When local altimeter setting not received, use Los Angeles Intl altimeter setting. Procedure NA at night

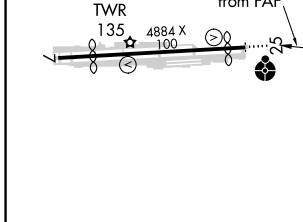
 ODALS

 MISSED APPROACH: Climbing left turn to 3000 via heading 210° and LAX VORTAC R-170 to LIMBO INT/LAX 10.4 DME and hold.

ATIS 118.4	SOCAL APP CON 124.9 269.0	HAWTHORNE TOWER ★ 121.1 (CTAF) 0 257.8	GND CON 125.1
----------------------	-------------------------------------	--	-------------------------



ELEV 66	TDZE 63
---------	---------

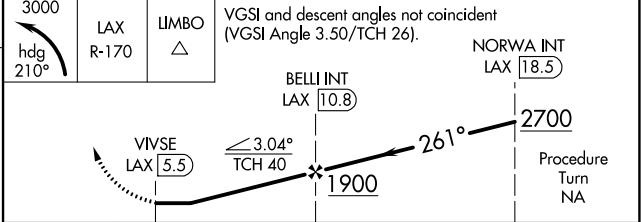


REIL Rwy 25
MIRL Rwy 7-25

FAF to MAP 5.3 NM

Knots	60	90	120	150	180
Min:Sec	5:18	3:32	2:39	2:07	1:46

CIRCLING



CATEGORY	A	B	C	D
S-25	600-1	537 (600-1)	600-1½ 537 (600-1½)	600-1¾ 537 (600-1¾)
<input checked="" type="checkbox"/> CIRCLING	620-1	554 (600-1)	780-2 714 (800-2)	780-2¼ 714 (800-2¼)

VOR RWY 25

SW-3, 27 JAN 2022 to 24 FEB 2022

SW-3, 27 JAN 2022 to 24 FEB 2022