

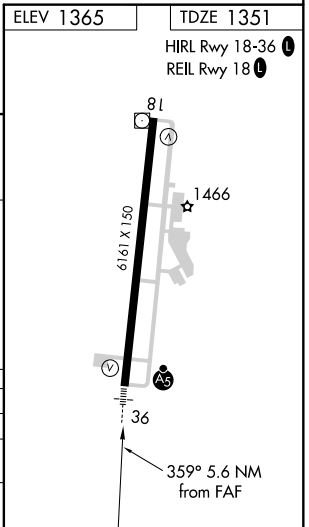
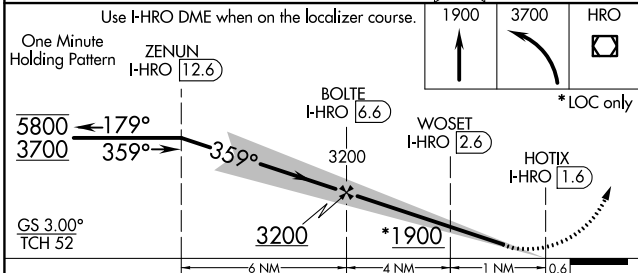
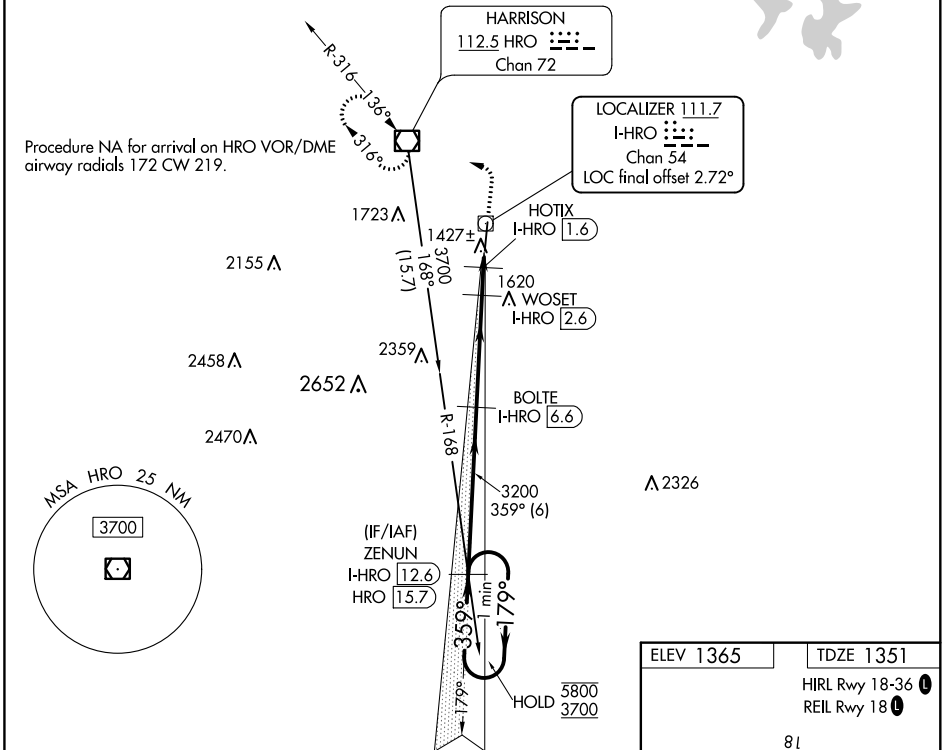
LOC/DME I-HRO <b>111.7</b> Chan 54	APP CRS <b>359°</b>	Rwy Idg TDZE Apt Elev	<b>6161</b> <b>1351</b> <b>1365</b>
--	------------------------	-----------------------------	---

# ILS or LOC RWY 36

BOONE COUNTY (HRO)

DME required for LOC only. DME or RADAR required for procedure entry. MALSR MISSED APPROACH: Climb to 1900 then climbing left turn to 3700 direct HRO VOR/DME and hold, continue climb-in hold to 3700.

ASOS <b>121.125</b>	MEMPHIS CENTER <b>126.85 281.55</b>	UNICOM <b>123.0 (CTAF)</b>
------------------------	--	-------------------------------



CATEGORY	A	B	C	D
S-ILS 36		1601-½ 250 (300-½)		
S-LOC 36		1680-½ 329 (400-½)		
CIRCLING	1840-1 475 (500-1)	1860-1 495 (500-1)	2340-3 975 (1000-3)	2560-3 1195 (1200-3)

SC-1, 27 JAN 2022 to 24 FEB 2022

SC-1, 27 JAN 2022 to 24 FEB 2022