

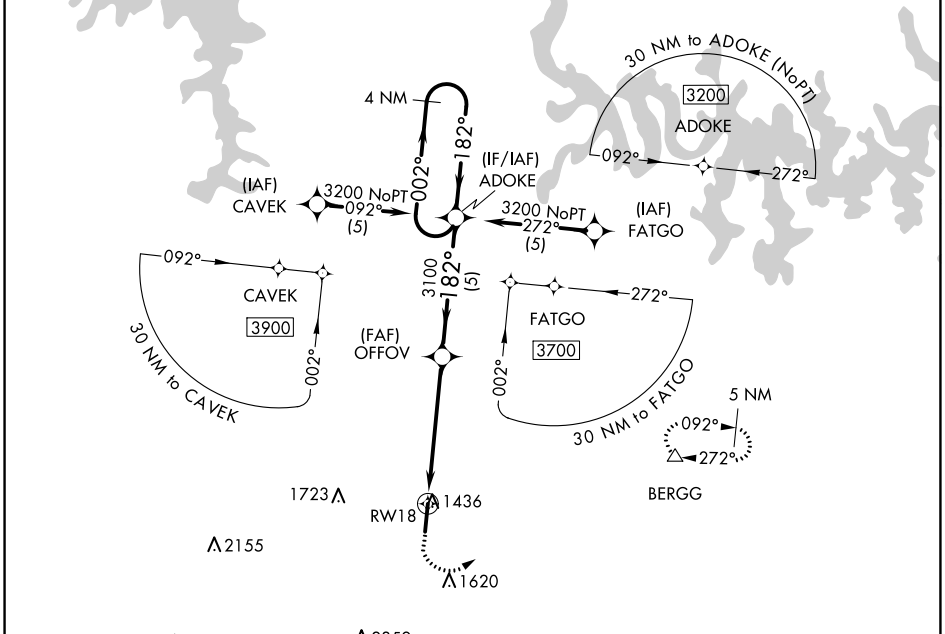
APP CRS	Rwy ldg	6161
182°	TDZE	1365
	Apt Elev	1365

RNAV (GPS) RWY 18

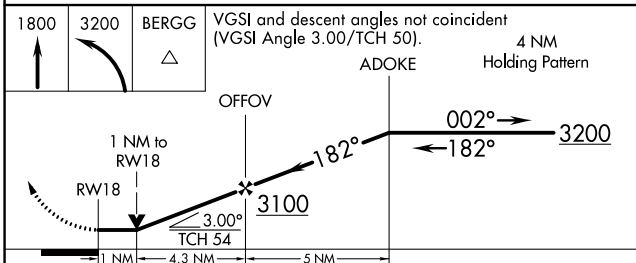
BOONE COUNTY (HRO)

RNP APCH.	MISSED APPROACH: Climb to 1800 then climbing left turn to 3200 direct BERGG and hold.
Rwy 18 helicopter visibility reduction below 3/4 SM NA.	

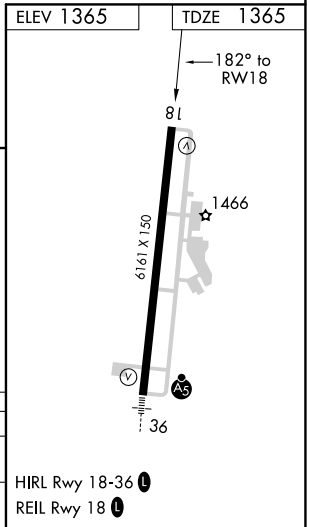
ASOS 121.125	MEMPHIS CENTER 126.85 281.55	UNICOM 123.0 (CTAF)
------------------------	--	-------------------------------



1800	3200	BERGG	VGSI and descent angles not coincident (VGSI Angle 3.00/TCH 50).
			4 NM Holding Pattern



CATEGORY	A	B	C	D
LNNAV MDA	1720-1 355 (400-1)			
CIRCLING	1840-1 475 (500-1)	1860-1 495 (500-1)	2340-3 975 (1000-3)	2560-3 1195 (1200-3)



SC-1, 27 JAN 2022 to 24 FEB 2022

SC-1, 27 JAN 2022 to 24 FEB 2022