

WAAS CH <b>93711</b> <b>W36A</b>	APP CRS <b>002°</b>	Rwy Idg <b>6161</b> TDZE <b>1351</b> Apt Elev <b>1365</b>
--	------------------------	---

# RNAV (GPS) RWY 36

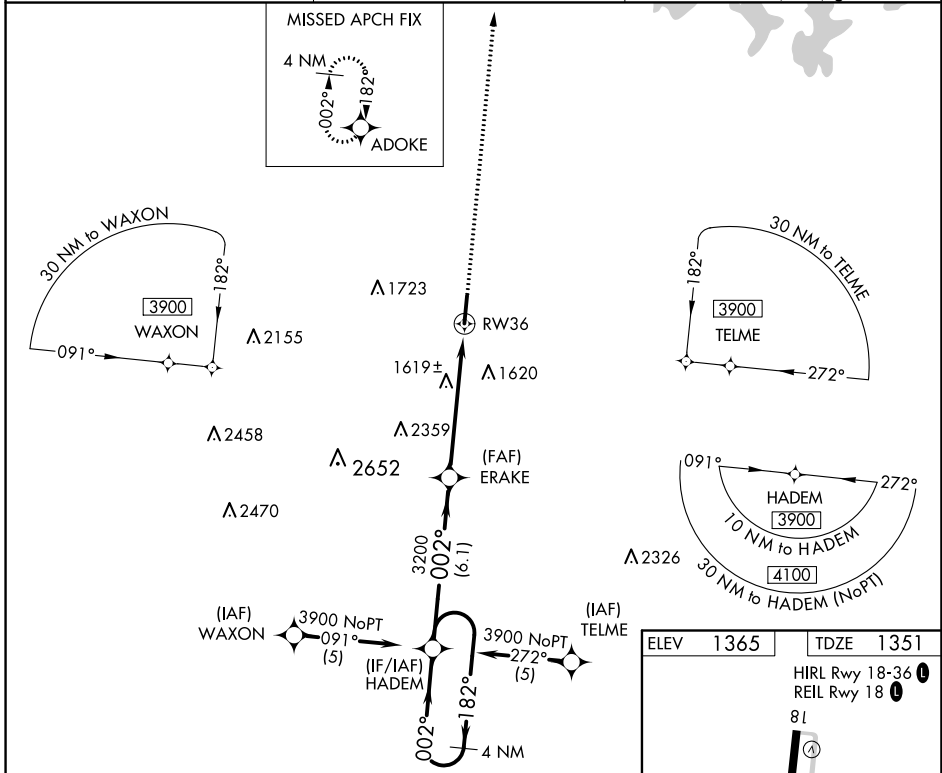
BOONE COUNTY (HRO)

**▼** For uncompensated Baro-VNAV systems, LNAV/VNAV NA below -17°C (2°F) or above 46°C (114°F). DME/DME RNP-0.3 NA. VDP and Baro-VNAV NA when using Mountain Home altimeter setting. When local altimeter setting not received, use Mountain Home altimeter setting and increase all DA 139 feet and all MDA 140 feet, increase LPV all Cats and LNAV and Circling Cat C and D visibility ½ mile, increase LNAV/VNAV all Cats visibility ½ mile. For inoperative MALSR when using Mountain Home altimeter setting, increase LPV all Cats visibility to 1¼.

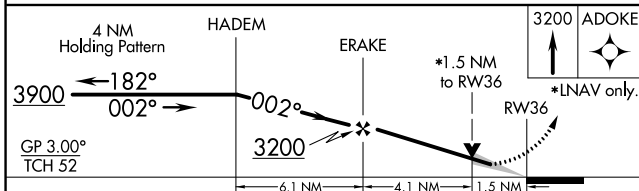
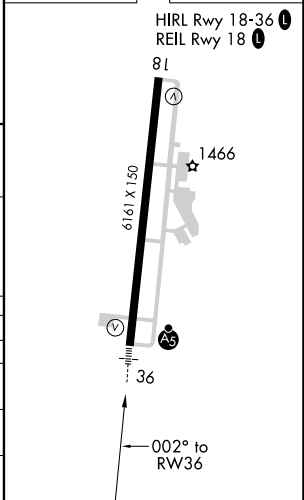


**MISSED APPROACH:**  
Climb to 3200 direct ADOKE and hold.

ASOS <b>121.125</b>	MEMPHIS CENTER <b>126.85 281.55</b>	UNICOM <b>123.0 (CTAF) 1</b>
------------------------	--	---------------------------------



ELEV 1365	TDZE 1351
-----------	-----------



CATEGORY	A	B	C	D
LPV DA		1601-½	250 (300-½)	
LNAV/VNAV DA		1815-1	464 (500-1)	
LNAV MDA	1880-½ 529 (600-½)		1880-1 529 (600-1)	1880-1¼ 529 (600-1¼)
<b>C</b> CIRCLING	1880-1 515 (600-1)		2340-3 975 (1000-3)	2560-3 1195 (1200-3)

SC-1, 27 JAN 2022 to 24 FEB 2022

SC-1, 27 JAN 2022 to 24 FEB 2022