

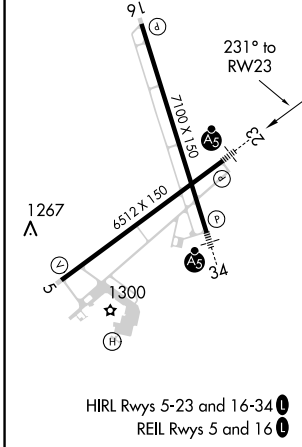
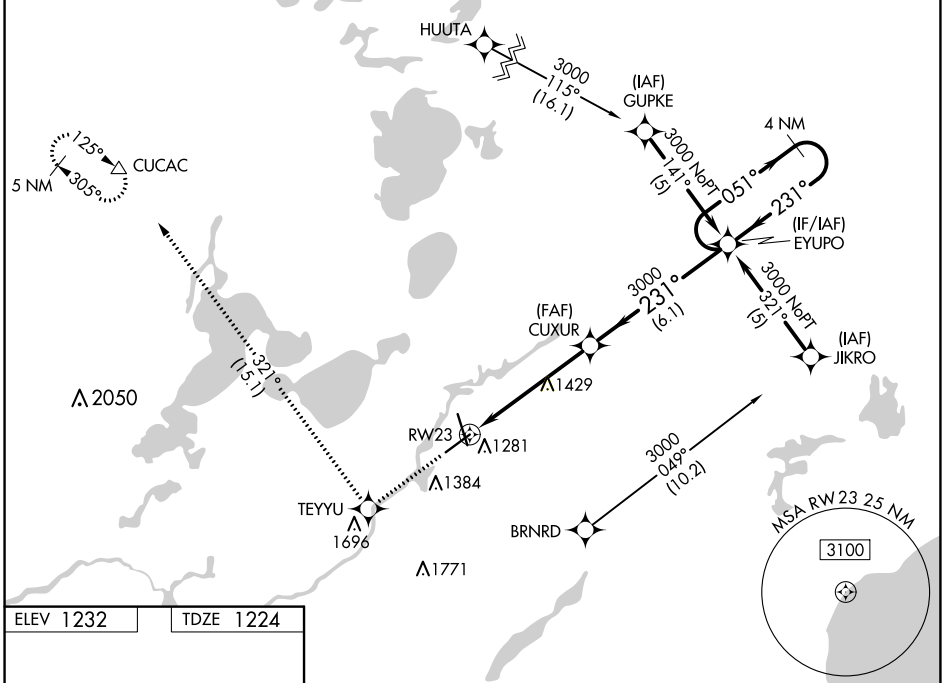
WAAS CH 82502 W23A	APP CRS 231°	Rwy Idg TDZE Apt Elev	6512 1224 1232
--	------------------------	-----------------------------	---

RNAV (GPS) RWY 23

BRAINERD LAKES RGNL (B.R.D.)

RNP APCH. ▼ For uncompensated Baro-VNAV systems, LNAV/VNAV NA below -17°C or above 54°C. Baro-VNAV and VDP NA when using Aikkin altimeter setting. When local altimeter setting not received, use Aikkin altimeter setting and increase all DAs 52 feet and all MDAs 60 feet.	MALSR AS	MISSED APPROACH: Climb to 3300 direct TEYU and on track 321° to CUCAC and hold.
--	-------------	---

ASOS 126.775	MINNEAPOLIS CENTER 118.05 239.0	UNICOM 122.7 (CTAF) 0
------------------------	---	--



ELEV 1232	TDZE 1224				
3300	TEYU	tr 321°	CUCAC		
*LNAV only		*1.5 NM to RW23		4 NM Holding Pattern	
RW23		CUXUR	EYUPO	051° → 3000	
				← 231° ← 3000	
				GP 3.00° TCH 50	
				1.5 NM 3.8 NM 6.1 NM	
CATEGORY	A	B	C	D	
LPV DA		1501-½ 277 (300-½)			
LNAV/VNAV DA		1573-¾ 349 (400-¾)			
LNAV MDA	1760-½	536 (600-½)	1760-1 536 (600-1)	1760-1¼ 536 (600-1¼)	
C CIRCLING	1760-1	528 (600-1)	1760-1½ 528 (600-1½)	1860-2 628 (700-2)	

NC-1, 27 JAN 2022 to 24 FEB 2022

NC-1, 27 JAN 2022 to 24 FEB 2022