

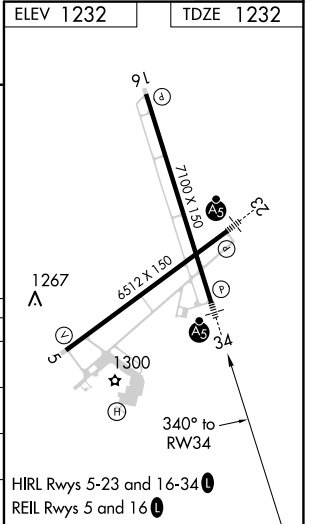
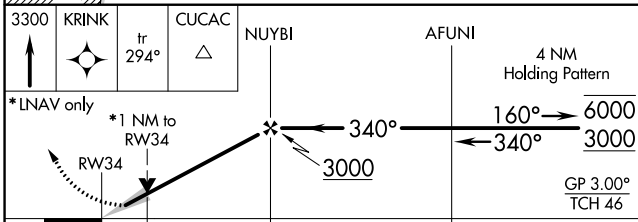
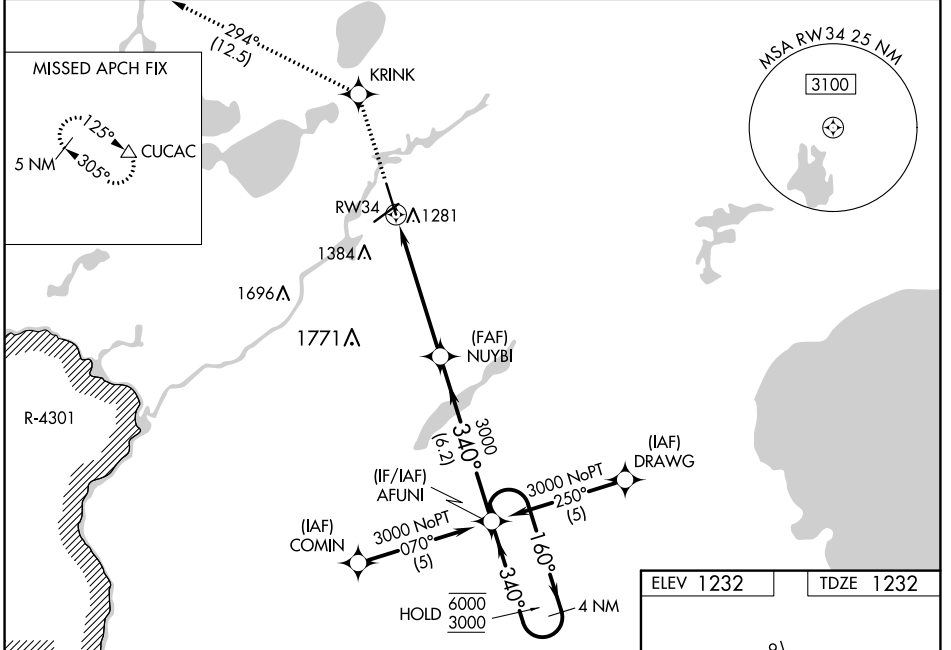
WAAS CH 70711 W34A	APP CRS 340°	Rwy Idg TDZE Apt Elev	7100 1232 1232
--	------------------------	-----------------------------	---

RNAV (GPS) RWY 34

BRAINERD LAKES RGNL (BRD)

RNP APCH.		MALSR 	MISSED APPROACH: Climb to 3300 direct KRINK and on track 294° to CUCAC and hold.
<p>▼ Baro-VNAV and VDP NA when using Aikini altimeter setting. For uncompensated Baro-VNAV systems, LNAV/VNAV NA below -17°C or above 54°C. When local altimeter setting not received, use Aikini altimeter setting; increase LPV DA to 1484, LNAV/VNAV DA to 1636 and LNAV/VNAV visibility ¼ SM; increase all MDAs 60 feet and LNAV Cats C and D visibility ¼ SM. For inop ALS when using Aikini altimeter setting, increase LNAV Cat D visibility to 1½ SM.</p>			

ASOS 126.775	MINNEAPOLIS CENTER 118.05 239.0	UNICOM 122.7(CTAF)
------------------------	---	------------------------------



CATEGORY	A	B	C	D
LPV DA		1432-½	200 (200-½)	
LNAV/VNAV DA		1584-¾	352 (400-¾)	
LNAV MDA	1620-½	388 (400-½)	1620-⅝ 388 (400-⅝)	1620-1 388 (400-1)
CIRCLING	1760-1	528 (600-1)	1760-1½ 528 (600-1½)	1860-2 628 (700-2)

NC-1, 27 JAN 2022 to 24 FEB 2022

NC-1, 27 JAN 2022 to 24 FEB 2022