

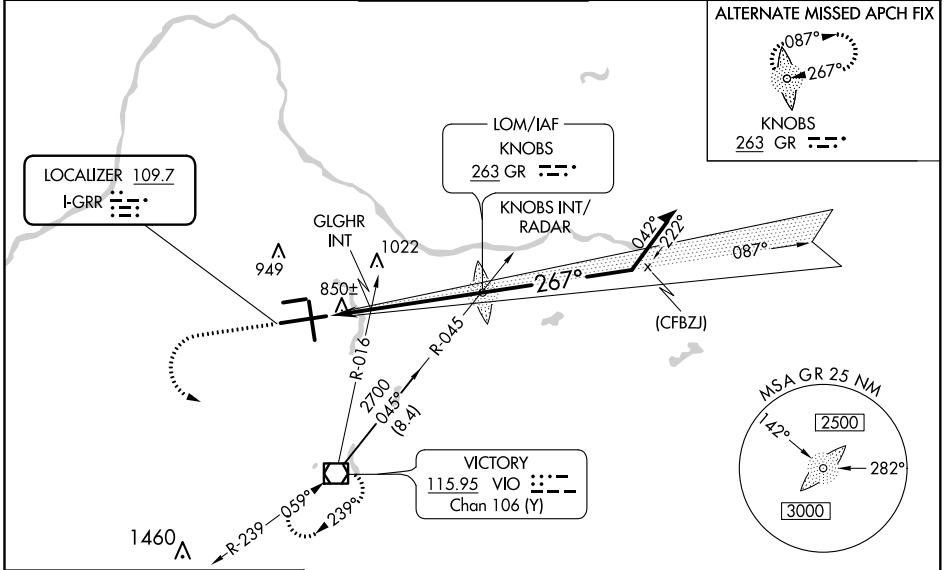
LOC I-GRR <b>109.7</b>	APP CRS <b>267°</b>	Rwy Idg 10001	TDZE <b>790</b>
		Apt Elev <b>794</b>	

# ILS or LOC RWY 26L

GERALD R FORD INTL (G.R.R.)

<b>ASR</b> For inop MALSRS when using GLGHR INT minimums, increase S-LOC 26L Cat D visibility to RVR 5000. For inop MALSRS when using Holland altimeter setting, increase S-LS 26L all Cats visibility to RVR 5000. **RVR 1800 authorized with the use of FD or AP or HUD to DA.	MALSRS 	MISSED APPROACH: Climb to 1300 then climbing left turn to 3000 direct VIO VOR/DME and hold.

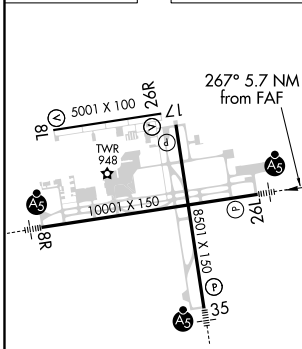
ATIS <b>118.725</b>	GREAT LAKES APP CON * <b>128.4 257.6</b>	GRAND RAPIDS TOWER * <b>135.65 (CTAF) 0 339.8</b>	GND CON <b>121.8</b>	CLNC DEL <b>119.3</b>	UNICOM <b>122.95</b>
------------------------	---	--	-------------------------	--------------------------	-------------------------



ALTERNATE MISSED APCH FIX

KNOBS  
263 GR

ELEV 794	<b>D</b>	TDZE 790
----------	----------	----------



MIRL Rwy 8L-26R  
REIL Rwys 8L, 17 and 26R  
HIRL Rwys 8R-26L and 17-35

FAF to MAP 5.7 NM

Knots	60	90	120	150	180
Min:Sec	5:42	3:48	2:51	2:17	1:54

1300 3000 VIO

VGSI and ILS glidepath not coincident (VGSI Angle 3.00/TCH 73).  
\* LOC only.

GLGHR INT \*1360

KNOBS LOM/INT/RADAR

Remain within 10 NM

2677 087° 2700 267° 2700

GS 3.00° TCH 55

1.7 NM 4 NM

CATEGORY	A	B	C	D
S-ILS 26L**	990/24		200 (200-½)	
S-LOC 26L	1360/24	570 (600-½)	1360/50 570 (600-1)	1360/60 570 (600-1¼)
<b>C</b> CIRCLING	1360-1	566 (600-1)	1360-1½ 566 (600-1½)	1360-2 566 (600-2)
GLGHR INT MINIMUMS (DUAL VOR RECEIVERS REQUIRED)				
S-LOC 26L	1120/24 330 (400-½)		1120/40 330 (400-¾)	
<b>C</b> CIRCLING	1260-1	466 (500-1)	1340-1½ 546 (600-1½)	1360-2 566 (600-2)

EC-1, 27 JAN 2022 to 24 FEB 2022

EC-1, 27 JAN 2022 to 24 FEB 2022