

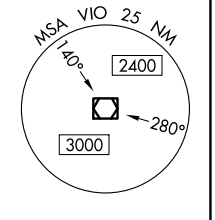
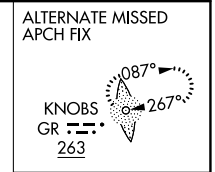
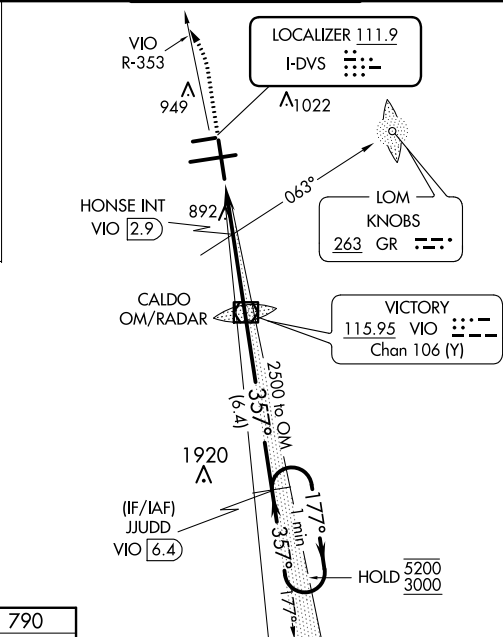
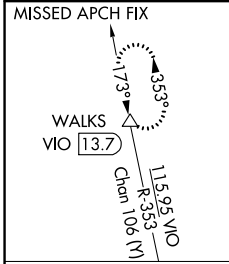
LOC I-DVS 111.9	APP CRS 357°	Rwy Idg TDZE Apt Elev	8501 790 794
---------------------------	------------------------	-----------------------------	---

ILS or LOC RWY 35

GERALD R FORD INTL (G.R.R.)

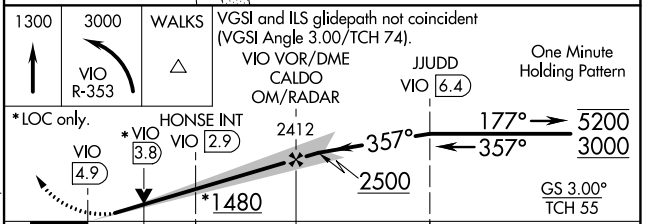
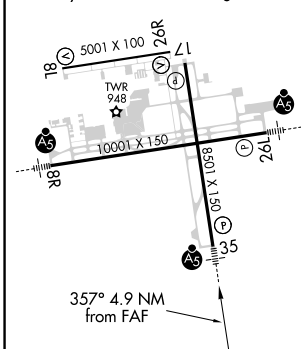
DME required. DME or RADAR required for procedure entry.		MALSR	MISSED APPROACH: Climb to 1300 then climbing left turn to 3000 on VIO VOR/DME R-353 to WALKS 13.7 DME and hold.
<p>▽ HONSE fix minimums: for inop ALS, increase Cat C and D visibility to RVR 6000.</p> <p>▲ ASR ** RVR 1800 authorized with use of FD or AP or HUD to DA.</p>			

ATIS 118.725	GREAT LAKES APP CON * 128.4 257.6	GRAND RAPIDS TOWER * 135.65 (CTAF) 0 339.8	GND CON 121.8	CLNC DEL 119.3	UNICOM 122.95
------------------------	---	--	-------------------------	--------------------------	-------------------------



ELEV 794	D	TDZE 790
----------	----------	----------

MIRL Rwy 8L-26R
REIL Rwy 8L, 17 and 26R
HIRL Rwy 8R-26L and 17-35



↑	1300	3000	WALKS	VGS1 and ILS glidepath not coincident (VGS1 Angle 3.00/TCH 74).	JUUDD VIO 6.4	One Minute Holding Pattern
*LOC only.	VIO 4.9	* VIO 3.8	HONSE INT VIO 2.9	2412	177° → 5200	← 357° 3000
	1.1 NM	0.9 NM	2.9 NM	6.4 NM		GS 3.00° TCH 55
CATEGORY	A	B	C	D		
S-ILS 35 **	990/24		200 (200-½)			
S-LOC 35	1480/24	690 (700-½)	1480-1½	690 (700-1½)		
C CIRCLING	1480-1	686 (700-1)	1480-2	686 (700-2)	1480-2¼	686 (700-2¼)
HONSE MINIMUMS (ADF OR DME REQUIRED)						
S-LOC 35	1200/24	410 (500-½)	1200/40	410 (500-¾)		
C CIRCLING	1260-1	466 (500-1)	1340-1½	546 (600-1½)	1360-2	566 (600-2)

FAF to MAP 4.9 NM					
Knots	60	90	120	150	180
Min:Sec	4:54	3:16	2:27	1:58	1:38

EC-1, 27 JAN 2022 to 24 FEB 2022

EC-1, 27 JAN 2022 to 24 FEB 2022