

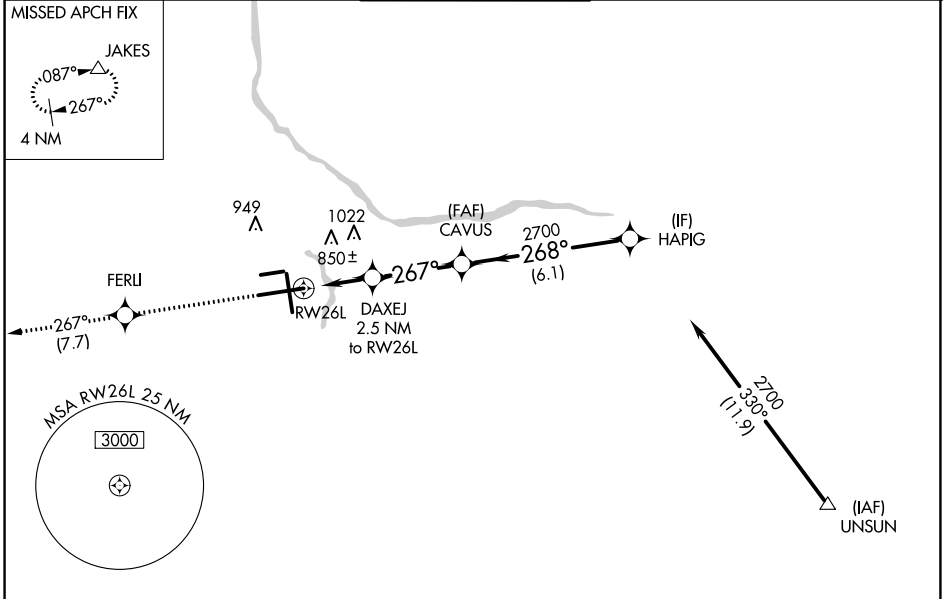
WAAS CH 86713 W26B	APP CRS 267°	Rwy Idg 10001 TDZE 790 Apt Elev 794
--	------------------------	--

RNAV (GPS) RWY 26L

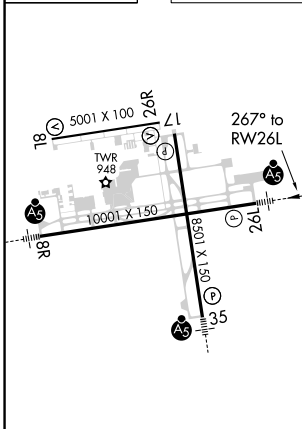
GERALD R FORD INTL (G.R.R.)

ASR	For uncompensated Baro-VNAV systems, LNAV/VNAV NA below -16°C (4°F) or above 54°C (130°F). DME/DME RNP-0.3 NA. For inoperative ALS, increase LNAV/VNAV Cat D visibility to RVR 5000. ** RVR 1800 authorized with use of FD or AP or HUD to DA.	MALSR	MISSED APPROACH: Climb to 2700 direct FERLI and track 267° to JAKES and hold.

ATIS 118.725	GREAT LAKES APP CON * 128.4 257.6	GRAND RAPIDS TOWER * 135.65 (CTAF) 339.8	GND CON 121.8	CLNC DEL 119.3	UNICOM 122.95
------------------------	---	--	-------------------------	--------------------------	-------------------------



ELEV 794	D	TDZE 790
----------	----------	----------



2700	FERLI	tr 267°	JAKES	VGSI and RNAV glidepath not coincident (VGSI Angle 3.00/TCH 73).
* LNAV only.				DAXEJ 2.5 NM to RWY 26L
* 1.3 NM to RWY 26L		CAVUS 2700	HAPIG	
RWY 26L		* 1640	2700	GP 3.00° TCH 55
1.3 NM		1.2 NM	3.2 NM	6.1 NM
CATEGORY	A	B	C	D
LPV DA **	990/24 200 (200-½)			
LNAV/VNAV DA	1114/24 324 (400-½)			1114/40 324 (400-¾)
LNAV MDA	1280/24	490 (500-½)	1280/40 490 (500-¾)	1280/50 490 (500-1)
C CIRCLING	1280-1	486 (500-1)	1340-1½ 546 (600-1½)	1360-2 566 (600-2)

MIRL Rwy 8L-26R
 REIL Rwy 8L, 17 and 26R
 HIRL Rwy 8R-26L and 17-35

EC-1, 27 JAN 2022 to 24 FEB 2022

EC-1, 27 JAN 2022 to 24 FEB 2022