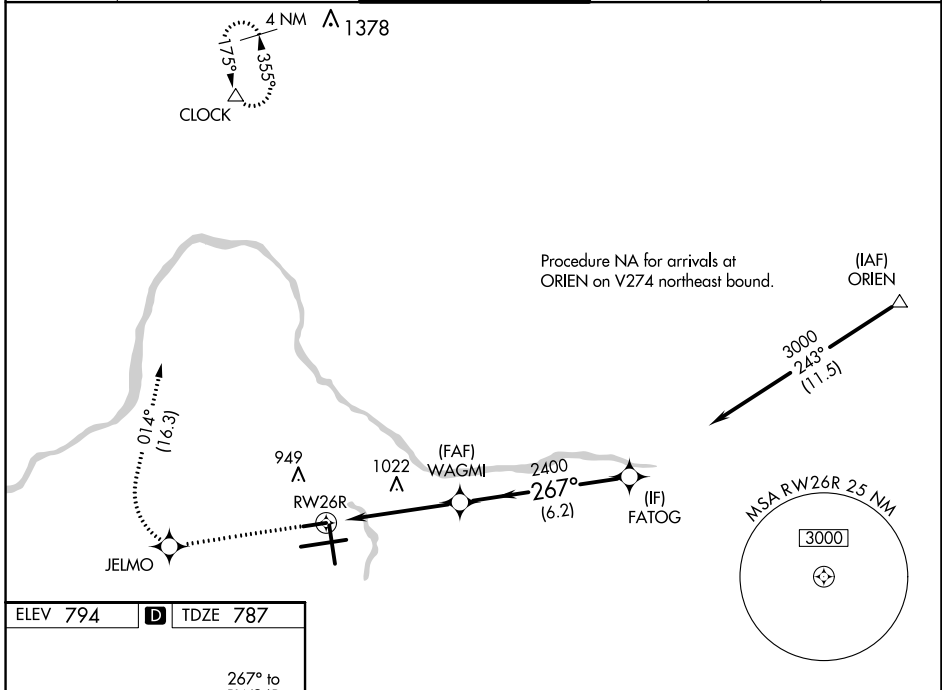


WAAS CH <b>82413</b> <b>W26A</b>	APP CRS <b>267°</b>	Rwy Idg TDZE Apt Elev	<b>5001</b> <b>787</b> <b>794</b>
--	------------------------	-----------------------------	---

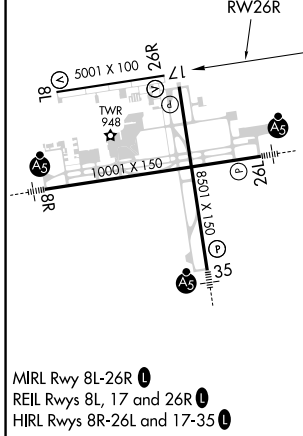
# RNAV (GPS) RWY 26R

GERALD R FORD INTL (G.R.R.)

RNP APCH.		MISSED APPROACH: Climb to 3000 direct JELMO and right turn on track 014° to CLOCK and hold.			
ATIS <b>118,725</b>	GREAT LAKES APP CON * <b>128.4 257.6</b>	GRAND RAPIDS TOWER * <b>135.65 (CTAF) 0 339.8</b>	GND CON <b>121.8</b>	CLNC DEL <b>119.3</b>	UNICOM <b>122.95</b>



ELEV 794	<b>D</b>	TDZE 787
----------	----------	----------



3000	JELMO	CLOCK	VGSi and RNAV glidepath not coincident (VGSi Angle 3.00/TCH 33).	
$\uparrow$	$\Delta$	tr 014°		
			FATOG	
			3000	
			GP 3.00° TCH 50	
			WAGMI 2400	
			RWY 26R	
			2400	
			267°	
			4.9 NM	
			6.2 NM	
CATEGORY	A	B	C	D
LPV DA		1037-1	250 (300-1)	
LNAV/VNAV DA		1216-1½	429 (500-1½)	
LNAV MDA	1280-1	493 (500-1)	1280-1¾ 493 (500-1¾)	1280-1½ 493 (500-1½)
<b>C</b> CIRCLING	1280-1	486 (500-1)	1340-1½ 546 (600-1½)	1360-2 566 (600-2)

EC-1, 27 JAN 2022 to 24 FEB 2022

EC-1, 27 JAN 2022 to 24 FEB 2022