

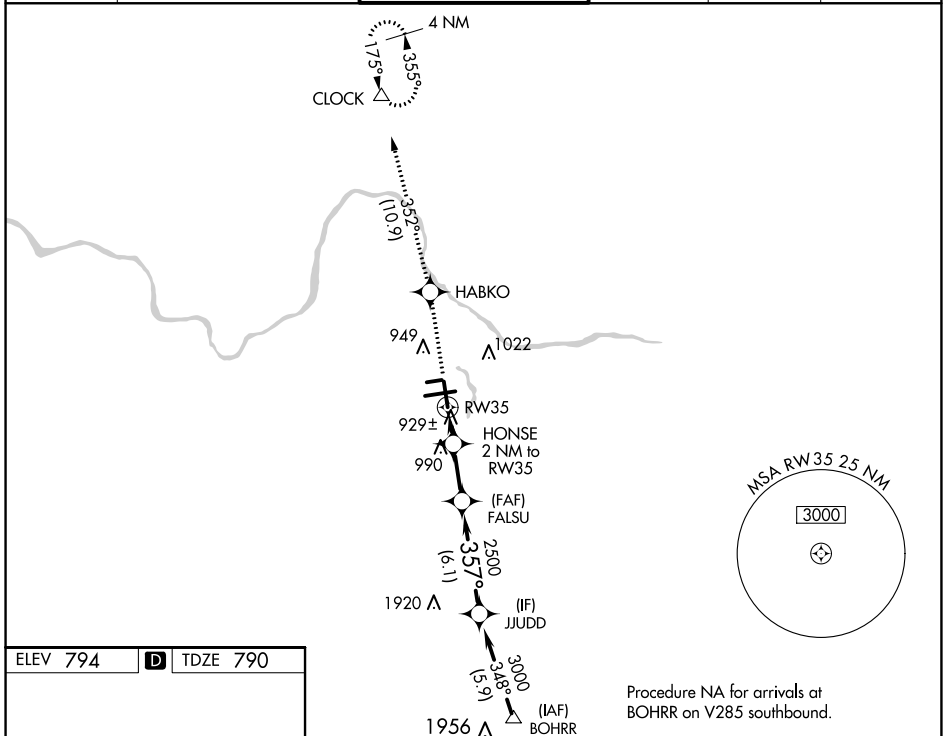
WAAS CH 87112 W35A	APP CRS 357°	Rwy Idg TDZE Apt Elev	8501 790 794
--	------------------------	-----------------------------	---

RNAV (GPS) RWY 35

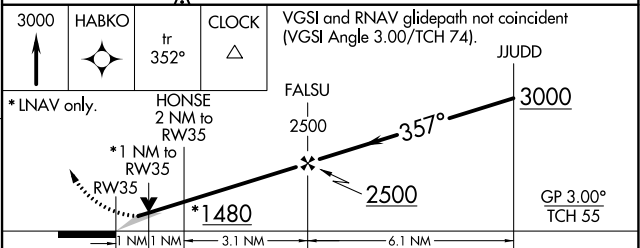
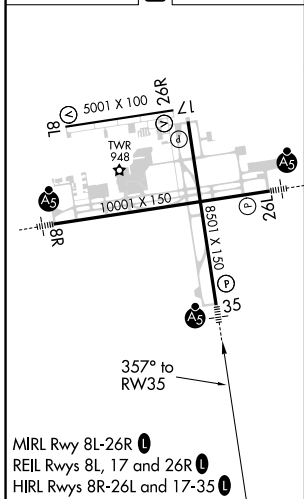
GERALD R FORD INTL (G.R.R.)

RNP APCH.	MALSR	MISSED APPROACH: Climb to 3000 direct HABKO and track 352° to CLOCK and hold.
ASR		
For uncompensated Baro-VNAV systems, LNAV/VNAV NA below -16°C or above 54°C. For inop ALS, increase LNAV Cat D visibility to RVR 6000. ** RVR 1800 authorized with use of FD or AP or HUD to DA.		

ATIS 118.725	GREAT LAKES APP CON * 128.4 257.6	GRAND RAPIDS TOWER * 135.65 (CTAF) 0 339.8	GND CON 121.8	CLNC DEL 119.3	UNICOM 122.95
------------------------	---	--	-------------------------	--------------------------	-------------------------



ELEV 794	D	TDZE 790
----------	----------	----------



CATEGORY	A	B	C	D
LPV DA**		990/24	200 (200-½)	
LNAV/VNAV DA		1236/50	446 (500-1)	
LNAV MDA	1180/24	390 (400-½)	1180/35 390 (400-¾)	1180/50 390 (400-1)
C CIRCLING	1260-1	466 (500-1)	1340-1½ 546 (600-1½)	1360-2 566 (600-2)

EC-1, 27 JAN 2022 to 24 FEB 2022

EC-1, 27 JAN 2022 to 24 FEB 2022