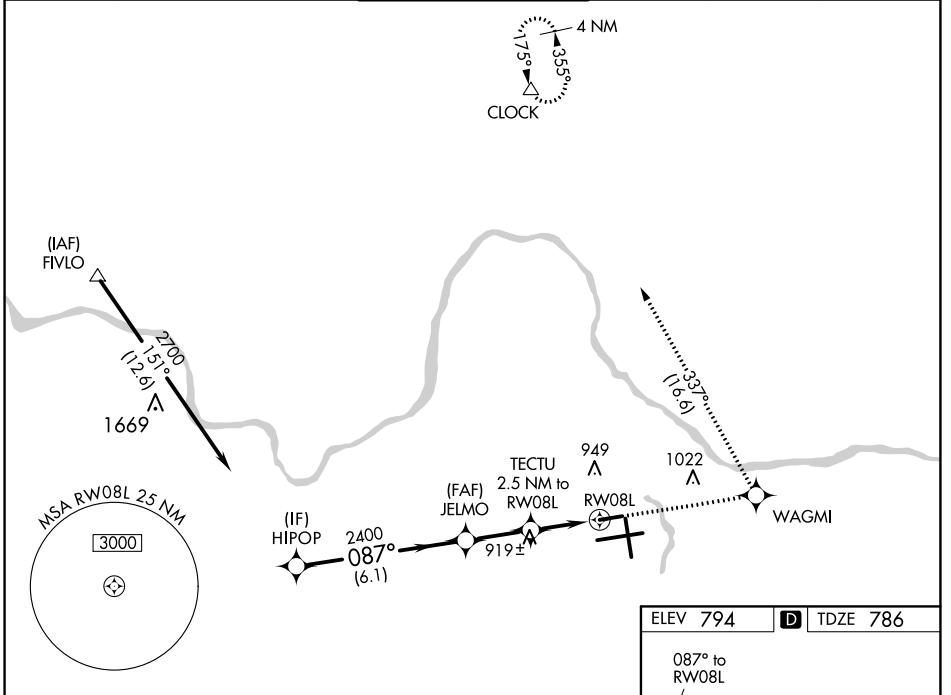


# RNAV (GPS) RWY 8L

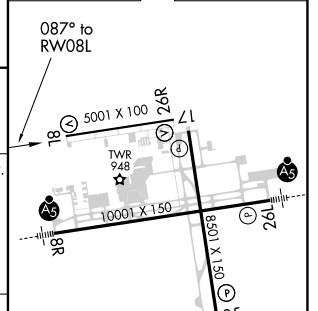
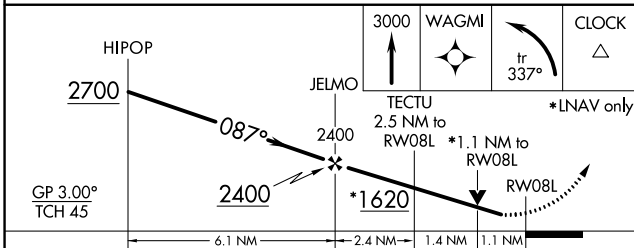
GERALD R FORD INTL (G.R.R.)

WAAS CH <b>40213</b> <b>W08A</b>	APP CRS <b>087°</b>	Rwy Idg TDZE Apt Elev	<b>5001</b> <b>786</b> <b>794</b>
--	------------------------	-----------------------------	---

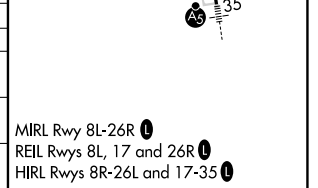
RNP APCH.		MISSED APPROACH: Climb to 3000 direct WAGMI and left turn on track 337° to CLOCK and hold.					
Rwy 8L helicopter visibility reduction below 3/4 SM NA. For uncompensated Baro-VNAV systems, LNAV/VNAV NA below -16°C or above 54°C.		ATIS <b>118.725</b>	GREAT LAKES APP CON ★ <b>128.4 257.6</b>	GRAND RAPIDS TOWER ★ <b>135.65 (CTAF) 339.8</b>	GND CON <b>121.8</b>	CLNC DEL <b>119.3</b>	UNICOM <b>122.95</b>



ELEV 794	<b>D</b> TDZE 786
----------	-------------------



CATEGORY	A	B	C	D
LPV DA	1036-1 250 (300-1)			
LNAV/VNAV DA	1203-1½ 417 (500-1½)			
LNAV MDA	1180-1 394 (400-1)	1180-1½ 394 (400-1½)	1180-1¼ 394 (400-1¼)	
<b>C</b> CIRCLING	1260-1 466 (500-1)	1340-1½ 546 (600-1½)	1360-2 566 (600-2)	



EC-1, 27 JAN 2022 to 24 FEB 2022

EC-1, 27 JAN 2022 to 24 FEB 2022