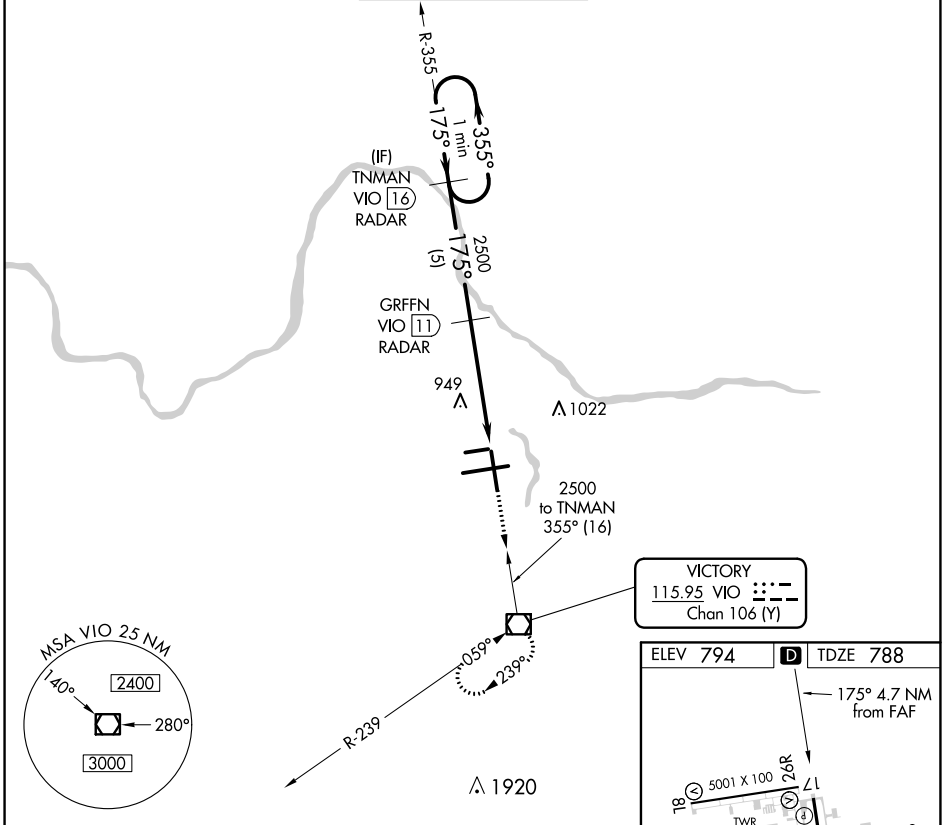


VOR RWY 17

GERALD R FORD INTL (G.R.R.)

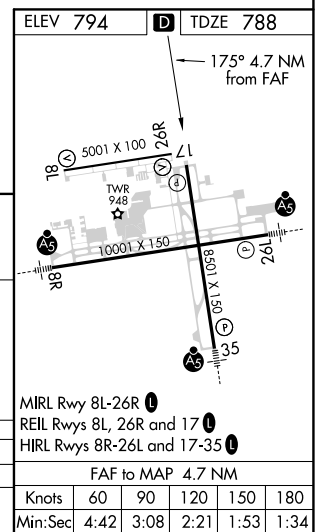
VOR/DME VIO	APP CRS	Rwy Idg TDZE	8501
115.95	175°	Apt Elev	788
Chan 106 (Y)			794

DME or RADAR required.			MISSED APPROACH: Climb to 3000 direct VIO VOR/DME and hold.		
⚠ When local altimeter setting not received, use Holland altimeter setting and increase all MDAs 80 feet and increase S-17 Cat D visibility ¼ SM. Rwy 17 helicopter visibility reduction below ¼ SM NA.					
ATIS	GREAT LAKES APP CON ★	GRAND RAPIDS TOWER ★	GND CON	CLNC DEL	UNICOM
118.725	128.4 257.6	135.65 (CTAF) 0 339.8	121.8	119.3	122.95



One Minute Holding Pattern	TNMAN VIO 16 RADAR	GRFFN VIO 11 RADAR	3000	VIO
2500 ← 355°	2500	2500	VIO 7.4	VIO 6.2
VGSi and descent angles not coincident (VGSi Angle 3.00/TCH 50).		3.32° TCH 45	1.2	
5 NM		3.5 NM		

VICTORY
115.95 VIO
Chan 106 (Y)



CATEGORY	A	B	C	D
S-17	1200-1	412 (500-1)	1200-1¼	412 (500-1¼)
Ⓢ CIRCLING	1280-1	486 (500-1)	1340-1½	1360-2
			546 (600-1½)	566 (600-2)

EC-1, 27 JAN 2022 to 24 FEB 2022

EC-1, 27 JAN 2022 to 24 FEB 2022

FAF to MAP 4.7 NM					
Knots	60	90	120	150	180
Min:Sec	4:42	3:08	2:21	1:53	1:34