

LOC I-HYZ 110.5	APP CRS 313°	Rwy Idg TDZE Apt Elev	6304 1114 1119
---------------------------	------------------------	-----------------------------	-------------------------------------------

ILS or LOC RWY 31
THIEF RIVER FALLS RGNL (TVF^F)

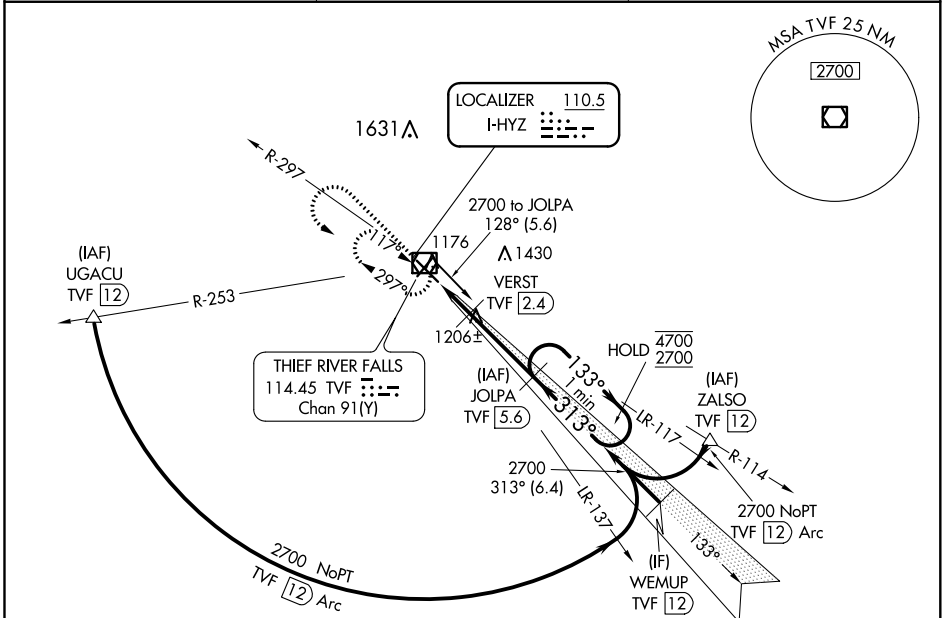
DME required for procedure entry. DME required.

▼ For inop ALS, increase S-LOC 31 Cat C/D visibility to 1 SM.
▲ DME from TVF VOR/DME. Simultaneous reception of I-HYZ and TVF DME required.

MALSR

MISSED APPROACH: Climb to 2700 then left turn direct TVF VOR/DME and hold.

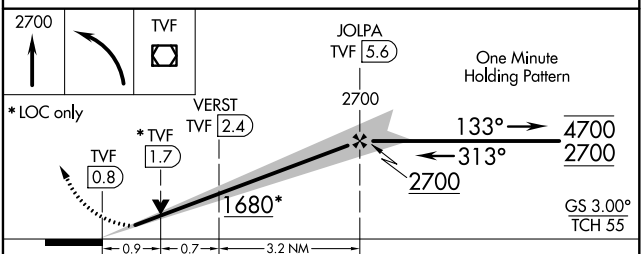
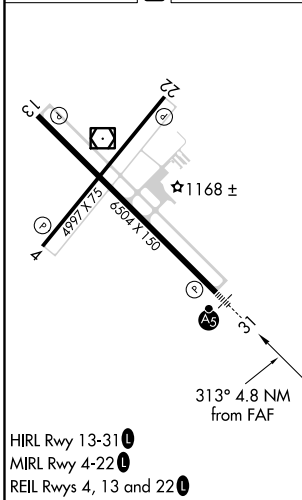
AWOS-3PT 119.025	MINNEAPOLIS CENTER 132.15 269.6	UNICOM 122.8 (CTAF) 0
----------------------------	-------------------------------------------	---------------------------------



NC-1, 27 JAN 2022 to 24 FEB 2022

NC-1, 27 JAN 2022 to 24 FEB 2022

ELEV 1119	D	TDZE 1114
-----------	----------	-----------



CATEGORY	A	B	C	D
S-ILS 31	1314-½		200 (200-½)	
S-LOC 31	1460-½	346 (400-½)	1460-⅝	346 (400-⅝)
C CIRCLING	1540-1 421 (500-1)	1580-1 461 (500-1)	1820-2 701 (800-2)	1980-2¾ 861 (900-2¾)