

WAAS CH 69311 W31A	APP CRS 313°	Rwy Idg TDZE Apt Elev 6304 1114 1119
--	------------------------	--

RNAV (GPS) RWY 31

THIEF RIVER FALLS RGNL (TVF)

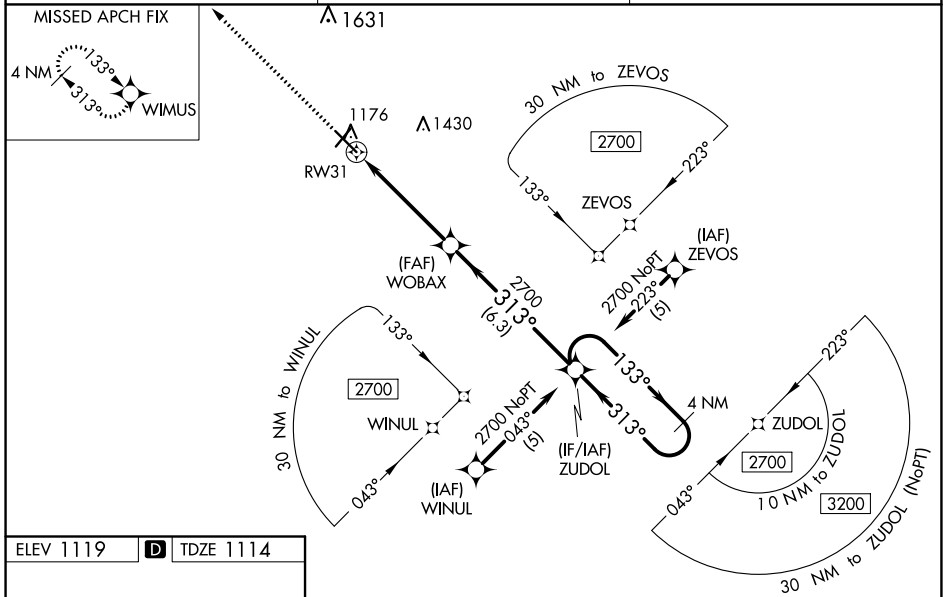
⚠ Baro-VNAV and VDP NA when using Crookston altimeter setting. For uncompensated Baro-VNAV systems, LNAV/VNAV NA below -17°C (2°F) or above 54°C (130°F). DME/DME RNP-0.3 NA. When local altimeter setting not received, use Crookston altimeter setting: increase LPV DA to 1446 feet and all visibilities 1/8 SM; increase LNAV/VNAV DA to 1510 feet and all visibilities 3/8 SM; increase all MDAs 100 feet and visibility Cats C and D 1/4 SM. For inoperative MALSR, increase LNAV Cats C/D visibility to 1 1/8 mile. For inoperative MALSR, when using Crookston altimeter setting, increase LPV all Cats visibility to 1 1/8 mile, LNAV/VNAV all Cats visibility to 1 1/4 mile, LNAV Cats C/D visibility to 1 1/2 mile.

MALSR

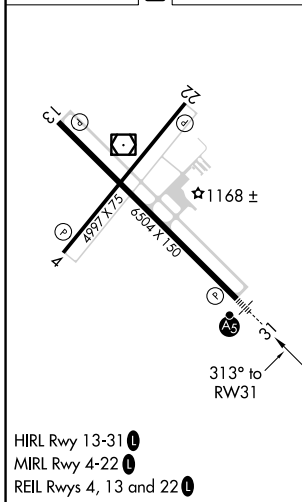


MISSED APPROACH:
Climb to 2700 direct
WIMUS and hold.

AWOS-3PT 119.025	MINNEAPOLIS CENTER 132.15 269.6	UNICOM 122.8 (CTAF) 0
----------------------------	---	---------------------------------

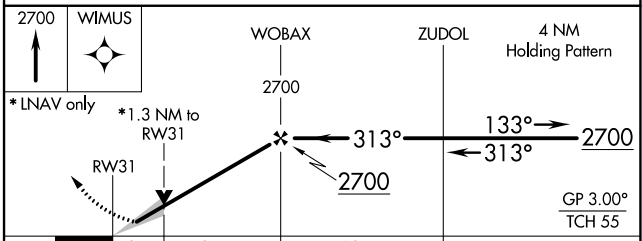


ELEV 1119	D	TDZE 1114
-----------	----------	-----------



HIRL Rwy 13-31
MIRL Rwy 4-22
REIL Rws 4, 13 and 22

THIEF RIVER FALLS, MINNESOTA
Orig-B 23APR20



CATEGORY	A	B	C	D
LPV DA		1364-1/2	250 (300-1/2)	
LNAV/VNAV DA		1428-1/2	314 (400-1/2)	
LNAV MDA	1580-1/2	466 (500-1/2)	1580-1	466 (500-1)
C CIRCLING	1580-1	461 (500-1)	1820-2 701 (800-2)	1980-2 3/4 861 (900-2 3/4)

NC-1, 27 JAN 2022 to 24 FEB 2022

NC-1, 27 JAN 2022 to 24 FEB 2022