

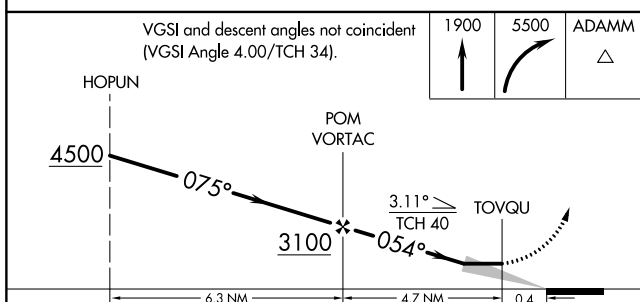
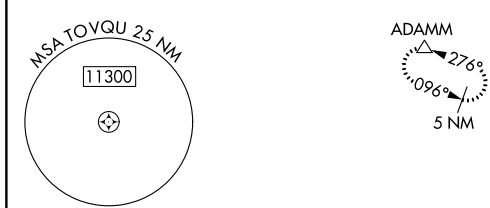
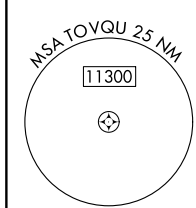
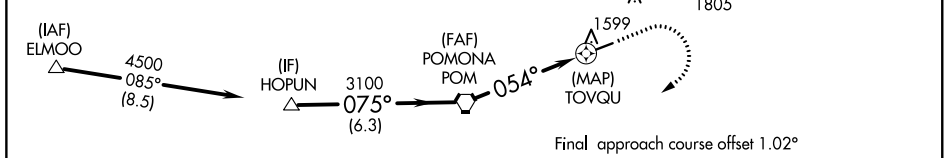
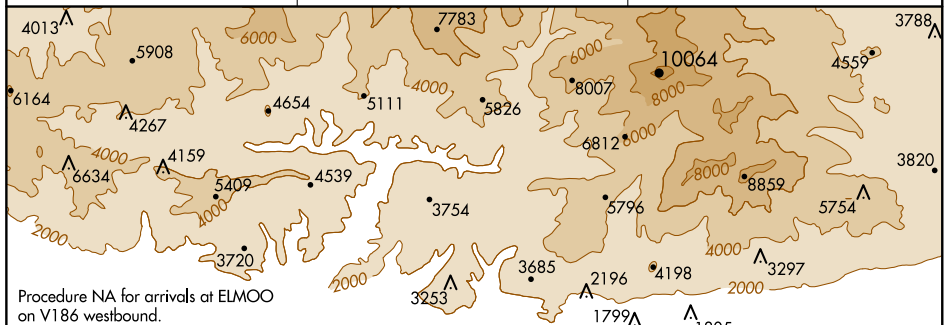
WAAS CH <b>45934</b> <b>W06A</b>	APP CRS <b>054°</b>	Rwy Idg TDZE Apt Elev	<b>3757</b> <b>1430</b> <b>1444</b>
--	------------------------	-----------------------------	---

# RNAV (GPS) RWY 6

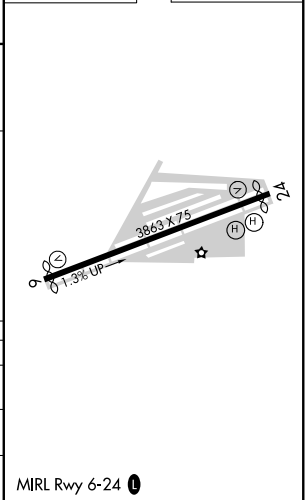
CABLE (CCB)

RNP APCH.	MISSED APPROACH: Climb to 1900 then climbing right turn to 5500 direct ADAMM and hold, continue climb-in-hold to 5500.
<p>▼ Circling NA northwest of Rwy 6-24. Rwy 6 helicopter visibility reduction below 3/4 SM NA. Circling Rwy 24 NA at night. When local altimeter setting not received, use NOAA altimeter setting and increase all MDA 100 feet.</p>	

AWOS-3P <b>119.525</b>	SOCAL APP CON <b>125.5 349.0</b>	UNICOM <b>123.0 (CTAF) 0</b>
---------------------------	-------------------------------------	---------------------------------



ELEV 1444	TDZE 1430
-----------	-----------



CATEGORY	A	B	C	D
LP MDA	1780-1	350 (400-1)	1780-1 1/8 350 (400-1 1/8)	NA
RNAV MDA	1940-1	510 (500-1)	1940-1 5/8 510 (500-1 5/8)	NA
◻ CIRCLING	2020-1	576 (600-1)	2140-2 696 (700-2)	NA

MIRL Rwy 6-24 0

SW-3, 27 JAN 2022 to 24 FEB 2022

SW-3, 27 JAN 2022 to 24 FEB 2022