

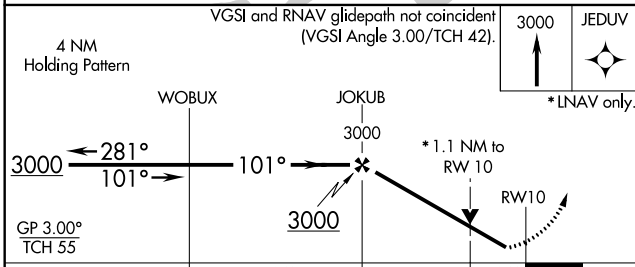
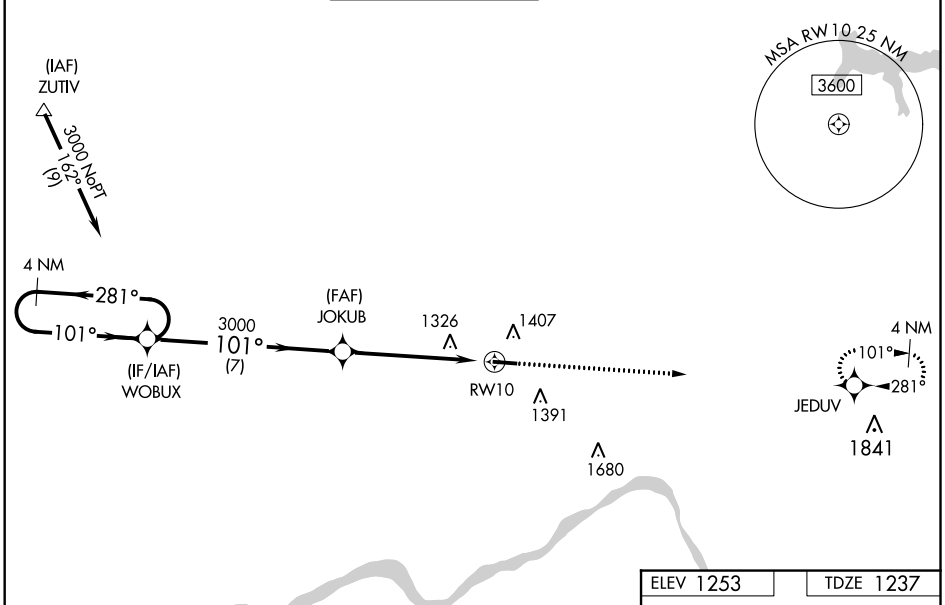
| | | |
|--|------------------------|--|
| WAAS CH 62821 W10A | APP CRS 101° | Rwy Idg TDZE Apt Elev 4501 1237 1253 |
|--|------------------------|--|

RNAV (GPS) RWY 10

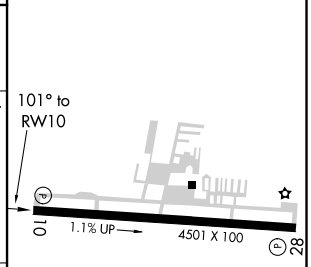
BEAVER COUNTY (BVI)

| | | |
|-----------|--|---|
| RNP APCH. | <p>Baro-VNAV and VDP NA when using Pittsburgh Intl altimeter setting. For uncompensated Baro-VNAV systems, LNAV/VNAV NA below -17°C (2°F) or above 36°C (96°F). When local altimeter setting not received, use Pittsburgh Intl altimeter setting; increase all DA 50 feet; increase all MDAs 60 feet and visibility LNAV Cats C and D ½ SM. Circling Rwy 28 NA at night. Rwy 10 helicopter visibility reduction below ¾ SM NA.</p> | MISSED APPROACH: Climb to 3000 direct JEDUV and hold. |
|-----------|--|---|

| | | | | |
|-----------------------|---|--|-------------------------|--|
| ATIS 118.35 | PITTSBURGH APP CON 124.75 338.2 | BEAVER COUNTY TOWER* 120.3 (CTAF) 0 | GND CON 121.8 | CLNC DEL 124.85 (when twr closed) |
|-----------------------|---|--|-------------------------|--|



| | |
|-----------|-----------|
| ELEV 1253 | TDZE 1237 |
|-----------|-----------|



| CATEGORY | A | B | C | D |
|--------------|--------|-------------|-------------------------|-----------------------|
| LPV DA | | 1528-1 | 290 (300-1) | |
| LNAV/VNAV DA | | 1514-1 | 276 (300-1) | |
| LNAV MDA | | 1580-1 | 342 (400-1) | |
| CIRCLING | 1720-1 | 467 (500-1) | 1720-1½ 467 (500-1½) | 1820-2 567 (600-2) |

MIRL Rwy 10-28 **0**
REIL Rwys 10 and 28 **0**

NE-4, 27 JAN 2022 to 24 FEB 2022

NE-4, 27 JAN 2022 to 24 FEB 2022