

WAAS CH <b>W28A</b>	APP CRS <b>281°</b>	Rwy Idg TDZE Apt Elev	<b>4501</b> <b>1253</b> <b>1253</b>
------------------------	------------------------	-----------------------------	---

# RNAV (GPS) RWY 28

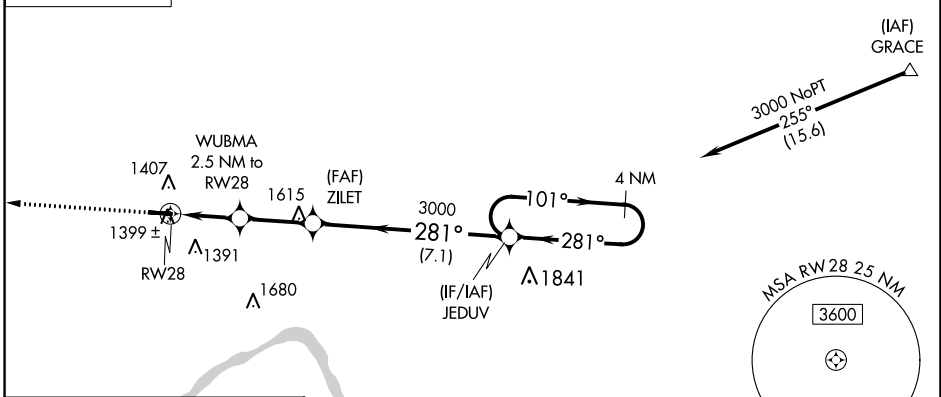
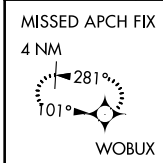
BEAVER COUNTY (BVI)

RNP APCH.

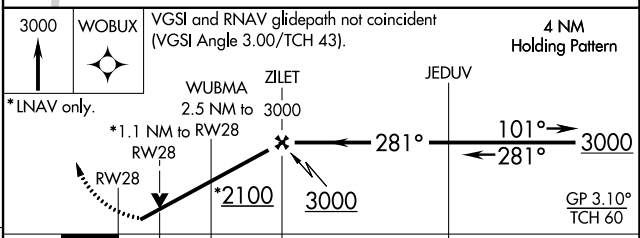
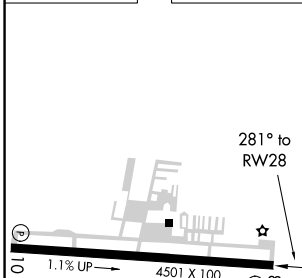
Baro-VNAV and VDP NA when using Pittsburgh Intl altimeter setting. For uncompensated Baro-VNAV systems, LNAV/VNAV NA below -17°C (2°F) or above 26°C (78°F). When local altimeter setting not received, use Pittsburgh Intl altimeter setting; increase all DA 50 feet; increase all MDAs 60 feet and visibility LNAV Cats C and D ¼ SM. Circling Rwy 28 NA at night. Rwy 28 helicopter visibility reduction below ¾ SM NA.

MISSED APPROACH: Climb to 3000 direct WOBUX and hold.

ATIS <b>118.35</b>	PITTSBURGH APP CON <b>124.75 338.2</b>	BEAVER COUNTY TOWER * <b>120.3</b> (CTAF) <b>0</b>	GND CON <b>121.8</b>	CLNC DEL <b>124.85</b> (when twr closed)
-----------------------	---	---	-------------------------	--



ELEV 1253	TDZE 1253
-----------	-----------



CATEGORY	A	B	C	D
LPV DA		1512-1	259 (300-1)	
LNAV/VNAV DA		1580-1	327 (400-1)	
LNAV MDA	1660-1	407 (500-1)	1660-1½	407 (500-1½)
CIRCLING	1720-1	467 (500-1)	1720-1½ 467 (500-1½)	1820-2 567 (600-2)

NE-4, 27 JAN 2022 to 24 FEB 2022

NE-4, 27 JAN 2022 to 24 FEB 2022