

VOR/DME EWC	APP CRS	Rwy Idg	4501
115.8	256°	TDZE	1253
Chan 105		Apt Elev	1253

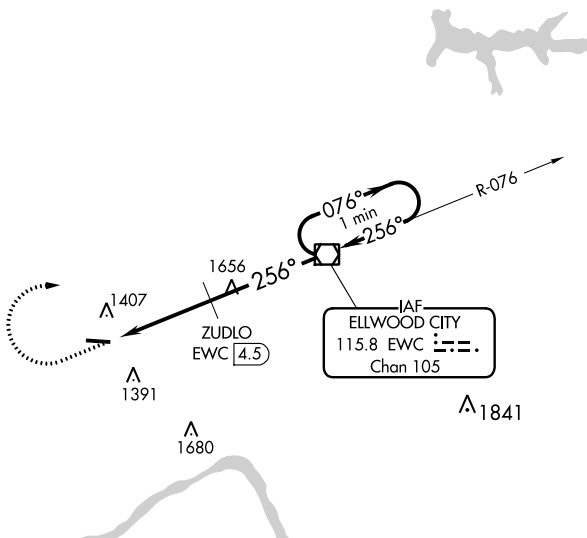
VOR RWY 28

BEAVER COUNTY (BVI)

▼ When local altimeter setting not received, use Pittsburgh Intl altimeter setting and increase MDAs 60 feet and visibility Circling Cats A and D ¼ SM and ZUDLO fix minimums S-28 Cats C/D ¼ SM and Circling Cat C ½ SM.
▲ Straight-in Rwy 28 NA at night, Circling Rwy 28 NA at night.
 Rwy 28 helicopter visibility reduction below 1 SM NA.

MISSED APPROACH: Climb to 3000 then right turn direct EWC VOR/DME and hold.

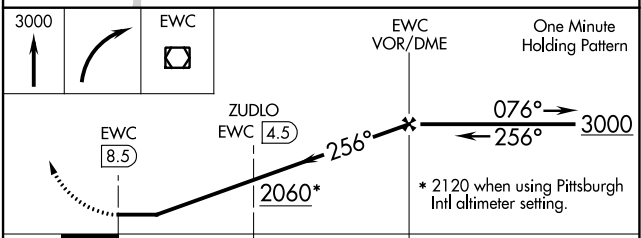
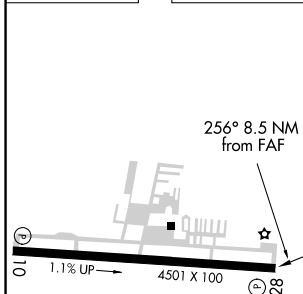
ATIS 118.35	PITTSBURGH APP CON 124.75 338.2	BEAVER COUNTY TOWER ★ 120.3 (CTAF) 0	GND CON 121.8	CINC DEL 124.85 (when twr closed)
-----------------------	---	--	-------------------------	--



NE-4, 27 JAN 2022 to 24 FEB 2022

NE-4, 27 JAN 2022 to 24 FEB 2022

ELEV 1253	TDZE 1253
-----------	-----------



CATEGORY	A		B		C		D	
	S-28	2060-1	807 (900-1)	2060-1 ¼	807 (900-1 ¼)	2060-2 ½	807 (900-2 ½)	807 (900-2 ½)
CIRCLING	2060-2	807 (900-2)	2060-2 ½	807 (900-2 ½)	2060-2 ½	807 (900-2 ½)	807 (900-2 ½)	
ZUDLO FIX MINIMUMS (DME REQUIRED)								
S-28	1740-1	487 (500-1)	1740-1 ½	487 (500-1 ½)	1740-1 ¾	487 (500-1 ¾)	1820-2	567 (600-2)
CIRCLING	1740-1	487 (500-1)	1740-1 ½	487 (500-1 ½)	1740-1 ½	487 (500-1 ½)	1820-2	567 (600-2)

MIRL Rwy 10-28
 REIL Rwys 10 and 28

FAF to MAP 8.5 NM

Knots	60	90	120	150	180
Min:Sec	8:30	5:40	4:15	3:24	2:50