

WAAS CH <b>87133</b> <b>W30A</b>	APP CRS <b>301°</b>	Rwy ldg TDZE Apt Elev	<b>5511</b> <b>1338</b> <b>1339</b>
--	------------------------	-----------------------------	---

# RNAV (GPS) RWY 30

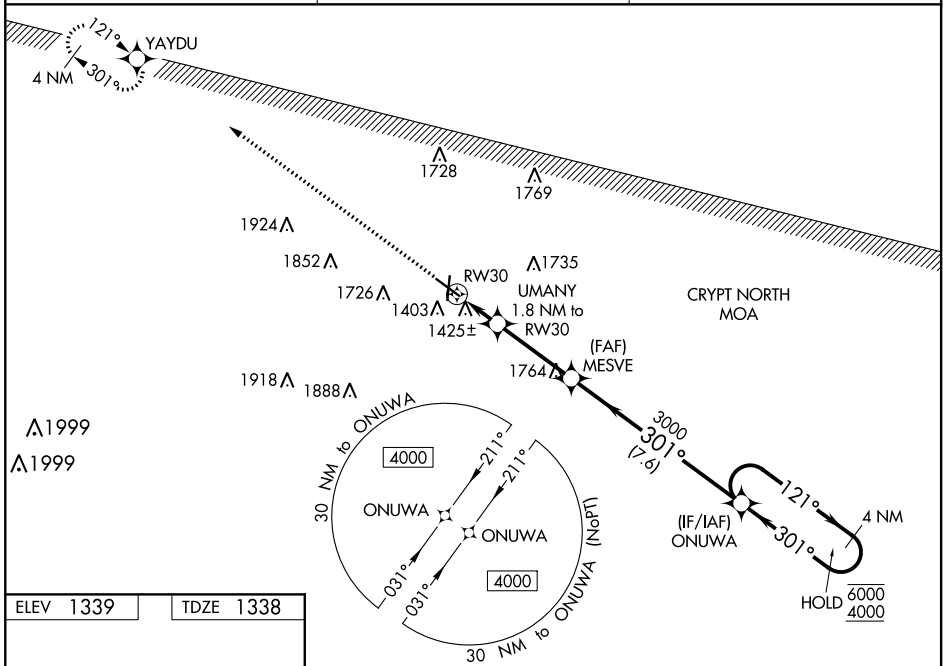
SPENCER MUNI (SPW)

RNP APCH-GPS.

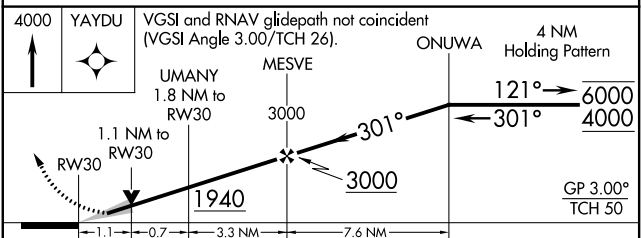
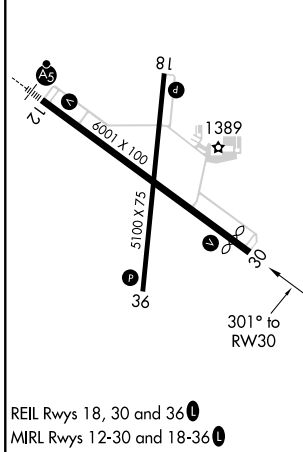
**⚠** Baro-VNAV and VDP NA when using Estherville altimeter setting. For uncompensated Baro-VNAV systems, LNAV/VNAV NA below -20°C or above 54°C. When local altimeter setting not received, use Estherville altimeter setting: increase LPV DA to 1648 feet, LNAV/VNAV DA to 1683 feet and all visibilities ½ SM; increase all MDAs 60 feet and visibility Cats C and D ¼ SM.

MISSED APPROACH:  
Climb to 4000 direct YAYDU and hold.

ASOS <b>126.625</b>	MINNEAPOLIS CENTER <b>127.75 257.7</b>	UNICOM <b>123.0 (CTAF)</b>
------------------------	---	-------------------------------



ELEV 1339	TDZE 1338
-----------	-----------



CATEGORY	A	B	C	D
LPV DA		1588-¾	250 (300-¾)	
LNAV/VNAV DA		1623-⅞	285 (300-⅞)	
LNAV MDA	1720-1	382 (400-1)	1720-1½	382 (400-1½)
CIRCLING	1760-1 421 (500-1)	1800-1 461 (500-1)	2100-2¼ 761 (800-2¼)	2100-2½ 761 (800-2½)

SPENCER, IOWA  
Amdt 1C 27JAN22

43°10'N-95°12'W

# RNAV (GPS) RWY 30

NC-3, 27 JAN 2022 to 24 FEB 2022

NC-3, 27 JAN 2022 to 24 FEB 2022