

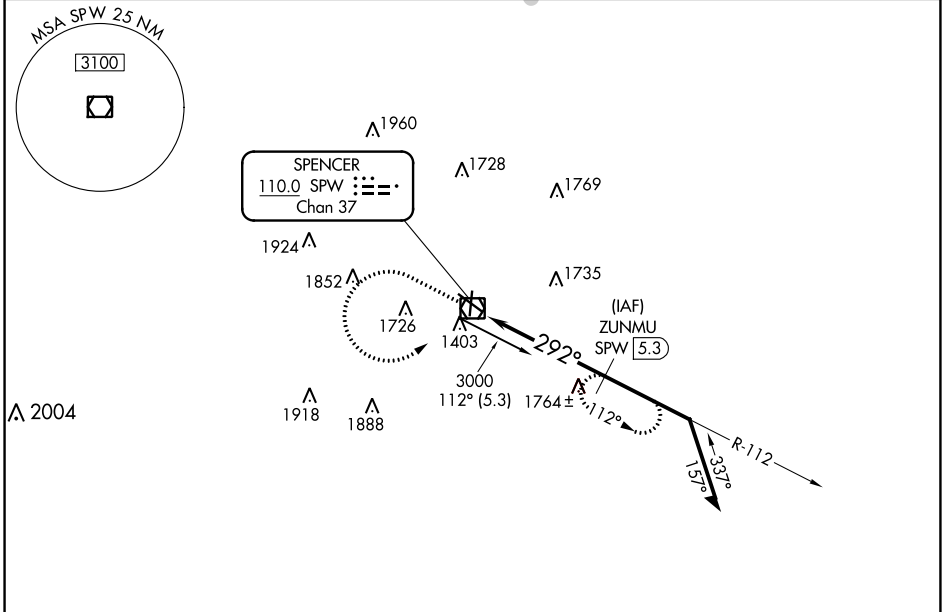
VOR/DME SPW <b>110.0</b> Chan <b>37</b>	APP CRS <b>292°</b>	Rwy ldg TDZE <b>1338</b> Apt Elev <b>1339</b>
---	------------------------	---

# VOR RWY 30

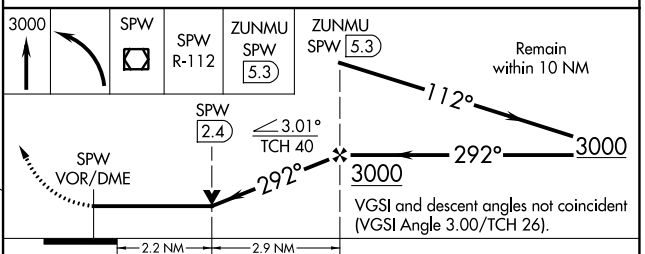
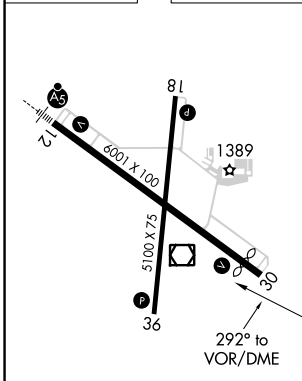
SPENCER MUNI (SPW)

DME required.	MISSED APPROACH: Climb to 3000, then left turn direct SPW VOR/DME, then on SPW VOR/DME R-112 to ZUNMU/SPW 5.3 DME and hold.
<p>▼ VDP NA when using Estherville altimeter setting.</p> <p>▲ When local altimeter setting not received, use Estherville altimeter setting and increase all MDA 60 feet and increase S-30 Cat C/D visibility ½ SM and Circling Cat C/D visibility ¼ SM.</p>	

ASOS <b>126.625</b>	MINNEAPOLIS CENTER <b>127.75 257.7</b>	UNICOM <b>123.0 (CTAF) 0</b>
------------------------	---	---------------------------------



ELEV 1339	TDZE 1338
-----------	-----------



CATEGORY	A	B	C	D
S-30	2080-1 742 (800-1)	2080-1¼ 742 (800-1¼)	2080-2	742 (800-2)
<b>C</b> CIRCLING	2080-1 741 (800-1)	2080-1¼ 741 (800-1¼)	2100-2¼ 761 (800-2¼)	2100-2½ 761 (800-2½)

REIL Rwy 18, 30 and 36  
MIRL Rwy 12-30 and 18-36

NC-3, 27 JAN 2022 to 24 FEB 2022

NC-3, 27 JAN 2022 to 24 FEB 2022