

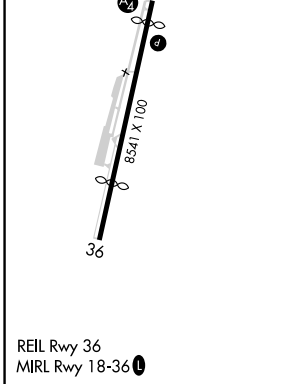
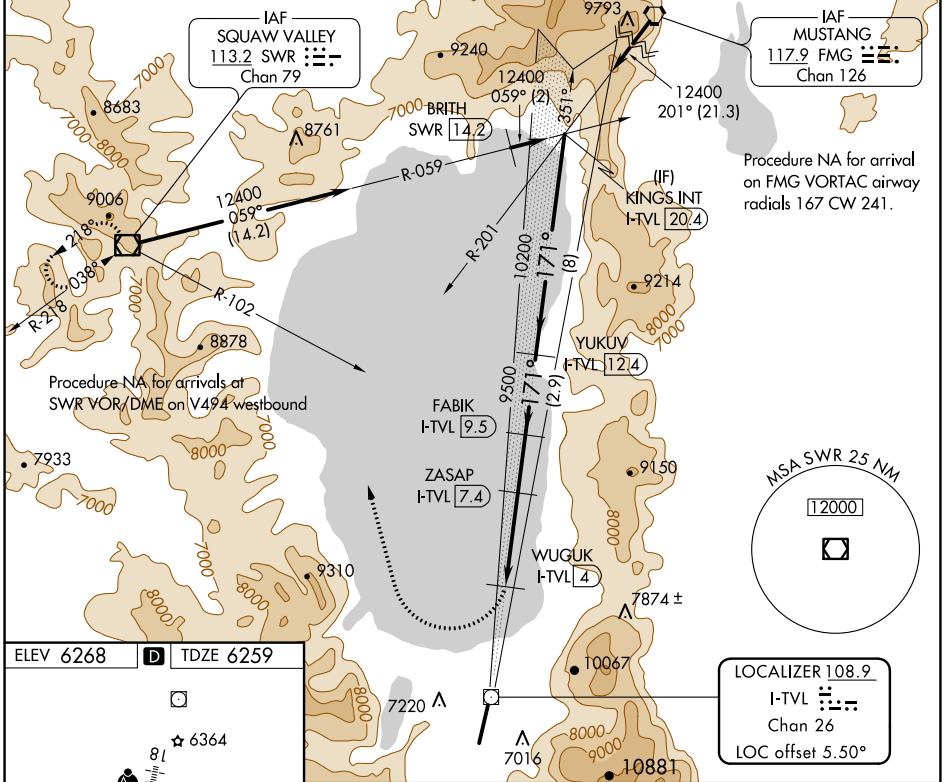
LOC/DME I-TVL 108.9 Chan 26	APP CRS 171°	Rwy Idg TDZE Apt Elev	7017 6259 6268
---	------------------------	-----------------------------	---

LDA RWY 18

LAKE TAHOE (TVL)

DME required.		MALSF	MISSED APPROACH: Climbing right turn to 11000 on heading 329° and SWR VOR/DME R-102 to SWR VOR/DME and hold.
NA	Rwy 18 helicopter visibility reduction below 3/4 SM NA. When local altimeter setting not received, procedure NA.		

ASOS 124.725	OAKLAND CENTER 127.95 316.1	CLINC DEL 134.3	CTAF 122.85
------------------------	---------------------------------------	---------------------------	-----------------------



ELEV 6268	TDZE 6259	LOCALIZER 108.9 I-TVL Chan 26 LOC offset 5.50°										
11000	SWR R-102	SWR										
<table border="1"> <thead> <tr> <th>CATEGORY</th> <th>A</th> <th>B</th> <th>C</th> <th>D</th> </tr> </thead> <tbody> <tr> <td>S-18</td> <td>7160-5</td> <td>901 (900-5)</td> <td></td> <td>8520-5 2261 (2300-5)</td> </tr> </tbody> </table>			CATEGORY	A	B	C	D	S-18	7160-5	901 (900-5)		8520-5 2261 (2300-5)
CATEGORY	A	B	C	D								
S-18	7160-5	901 (900-5)		8520-5 2261 (2300-5)								

SW-2, 27 JAN 2022 to 24 FEB 2022

SW-2, 27 JAN 2022 to 24 FEB 2022