

WAAS CH 45820 W09A	APP CRS 093°	Rwy Idg TDZE Apt Elev	5001 736 738
--	------------------------	-----------------------------	---

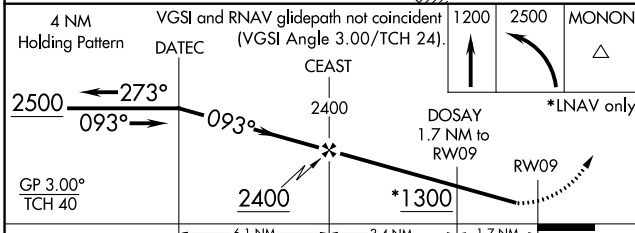
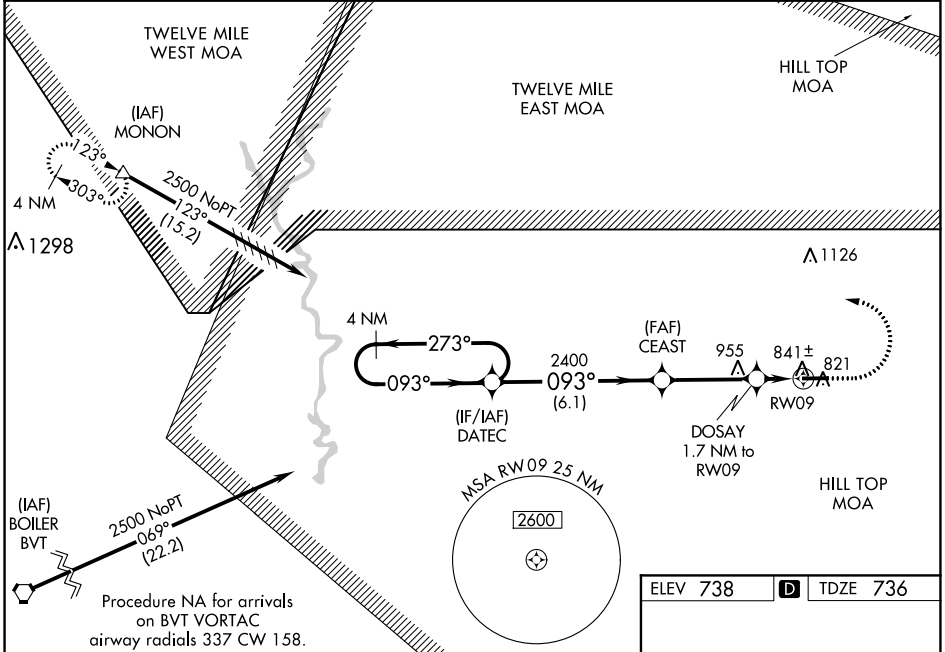
RNAV (GPS) RWY 9

LOGANSPORT/CASS COUNTY (GGP)

NA Baro-VNAV NA when using Grissom ARB altimeter setting. For uncompensated Baro-VNAV systems, LNAV/VNAV NA below -16°C (4°F) or above 39°C (102°F). When local altimeter setting not received, use Grissom ARB altimeter setting: increase LPV DA to 1027 feet; increase LNAV/VNAV DA to 1058 feet and all visibilities ½ SM; increase all MDAs 40 feet and Circling visibility Cat D ¼ SM. When VGSI inoperative, Straight-in/Circling Rwy 9 procedure NA at night. DME/DME RNP-0.3 NA. Helicopter visibility reduction below 1 SM NA.

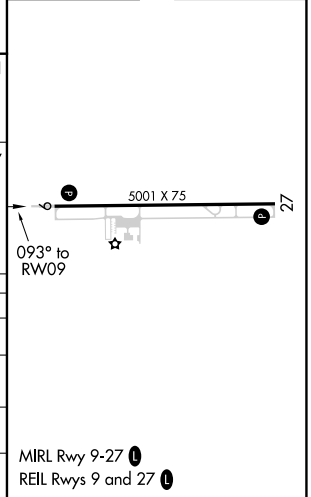
MISSED APPROACH: Climb to 1200, then climbing left turn to 2500 direct MONON and hold.

AWOS-3P 118.5	GRISSOM APP CON★ 121.05 338.275	UNICOM 122.8 (CTAF)
-------------------------	---	-------------------------------



ELEV 738	D	TDZE 736
----------	----------	----------

CATEGORY	A	B	C	D
LPV DA		991-1	255 (300-1)	
LNAV/VNAV DA		1022-1	286 (300-1)	
LNAV MDA		1100-1	364 (400-1)	
CIRCLING	1180-1 442 (500-1)	1200-1 462 (500-1)	1280-1½ 542 (600-1½)	1400-2 662 (700-2)



EC-2, 27 JAN 2022 to 24 FEB 2022

EC-2, 27 JAN 2022 to 24 FEB 2022

MIRL Rwy 9-27
REIL Rwys 9 and 27