

VORTAC OKK 113.5 Chan 82	APP CRS 312°	Rwy Idg TDZE Apt Elev	N/A N/A 738
--	------------------------	-----------------------------	--

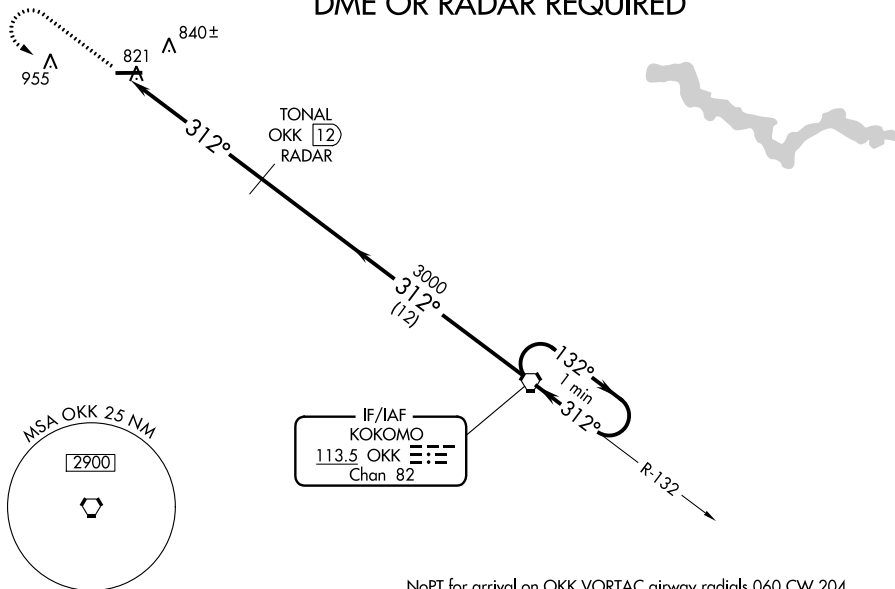
VOR-A

LOGANSPORT/CASS COUNTY (GGP)

▲ When local altimeter setting not received, use Grissom ARB altimeter setting. MISSED APPROACH: Climb to 3000, then left turn on OKK VORTAC R-312 to OKK VORTAC and hold.

AWOS-3P 118.5	GRISSOM APP CON ★ 121.05 338.275	UNICOM 122.8 (CTAF) 0
-------------------------	--	---------------------------------

DME OR RADAR REQUIRED



NoPT for arrival on OKK VORTAC airway radials 060 CW 204.

EC-2, 27 JAN 2022 to 24 FEB 2022

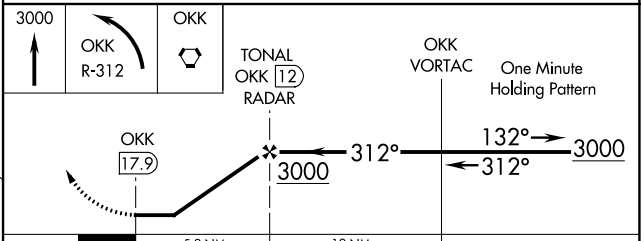
EC-2, 27 JAN 2022 to 24 FEB 2022

ELEV 738 **D**

MIRL Rwy 9-27 **0**
REL Rwys 9 and 27 **0**

FAF to MAP 5.9 NM

Knots	60	90	120	150	180
Min:Sec	5:54	3:56	2:57	2:22	1:58



CATEGORY	A	B	C	D
CIRCLING	1200-1	462 (500-1)	1280-1½ 542 (600-1½)	1400-2 662 (700-2)
GRISSOM ARB ALTIMETER SETTING MINIMUMS				
CIRCLING	1240-1	502 (600-1)	1320-1½ 582 (600-1½)	1440-2¼ 702 (800-2¼)

VOR-A