

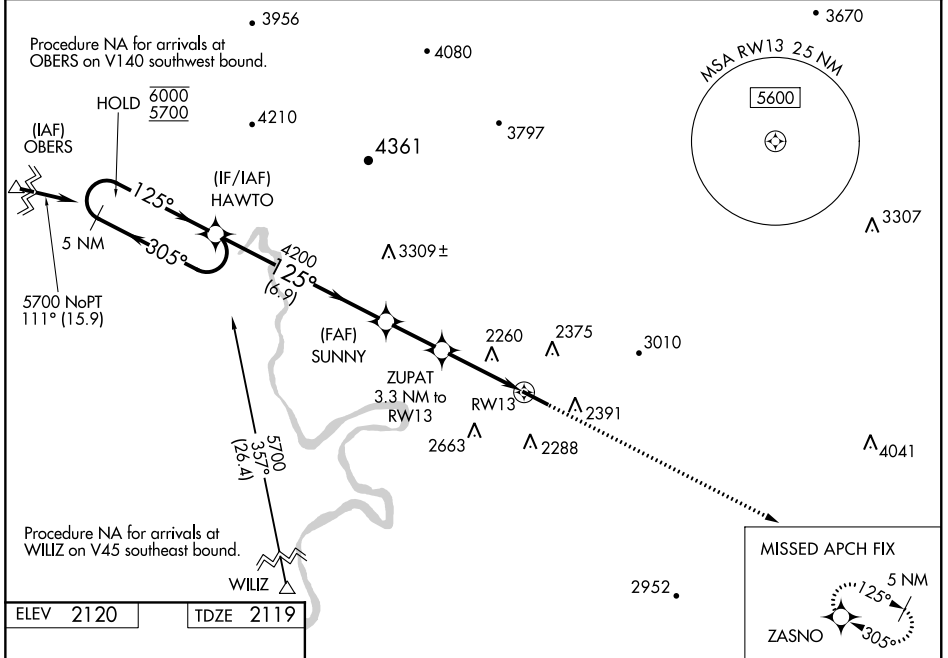
WAAS CH 86712 W13A	APP CRS 125°	Rwy Idg TDZE Apt Elev	5501 2119 2120
--	------------------------	-----------------------------	---

RNAV (GPS) RWY 13

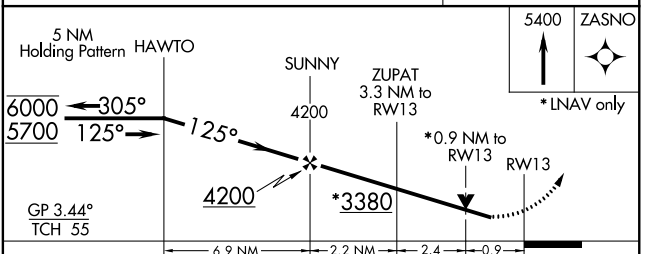
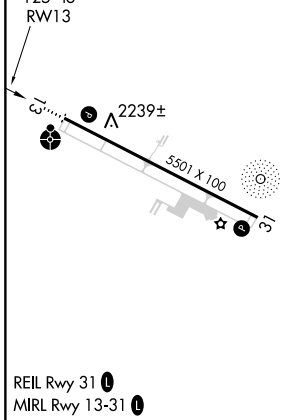
VIRGINIA TECH/MONTGOMERY EXEC (BCB)

RNP APCH.	ODALS	MISSED APPROACH: Climb to 5400 direct ZASNO and hold, continue climb-in-hold to 5400.
<p>Rwy 13 helicopter visibility reduction below 1 SM NA. For uncompensated Baro-VNAV systems, LNAV/VNAV NA below -19°C or above 54°C. Inop table does not apply to LPV all Cats, LNAV/VNAV all Cats, and LNAV Cats A and B.</p>		

AWOS-3 133.325	ROANOKE APP CON 126.9 339.8	CLNC DEL 124.85	UNICOM 123.05 (CTAF)
--------------------------	---------------------------------------	---------------------------	--------------------------------



ELEV 2120	TDZE 2119
-----------	-----------



CATEGORY	A	B	C	D
LPV DA		2389-1	270 (300-1)	NA
LNAV/VNAV DA		2419-1	300 (300-1)	NA
LNAV MDA		2520-1	401 (400-1)	NA
CIRCLING	2760-1 640 (700-1)	2820-1 700 (700-1)	2980-2½ 860 (900-2½)	NA

NE-3, 27 JAN 2022 to 24 FEB 2022

NE-3, 27 JAN 2022 to 24 FEB 2022