

WAAS CH 99332 W35A	APP CRS 346°	Rwy Idg TDZE Apt Elev	5318 4729 4734
--	------------------------	-----------------------------	---

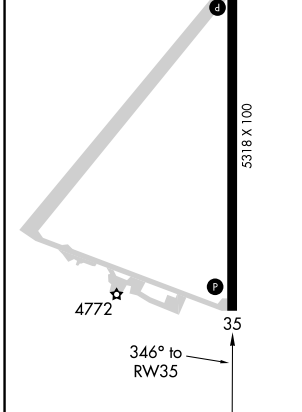
RNAV (GPS) RWY 35

LAKE COUNTY (L.K.V)

RNP APCH. **⚠**
⚠ For uncompensated Baro-VNAV systems, LNAV/VNAV NA below -24°C or above 50°C. Circling NA east of Rwy 17-35.

MISSED APPROACH: (Do not exceed 235K until NUSME) Climb to 5200 then climbing left turn to 11000 direct NUSME and on track 152° to CHOIR and hold.

AWOS-3PT 135.525	SEATTLE CENTER 127.6 346.35	UNICOM 122.8 (CTAF) Ⓛ
----------------------------	---------------------------------------	--



5200	11000	NUSME	tr 152°	CHOIR	NUSME	7 NM Holding Pattern
↑	↷	⬠		△		
* LNAV only		EWING	6500	WIPUL	7500	152° → 14000 ← 332° 9800
RW35		SABPO 1.2 NM to RW35	6500	6500	7500	GP 3.00° TCH 45
1.2 NM		4.2 NM	3.2 NM	7.2 NM		
CATEGORY	A	B	C	D		
LPV DA	4979-1 250 (300-1)					
LNAV/VNAV DA	5121-1½ 392 (400-1½)					
LNAV MDA	5080-1 351 (400-1)					
C CIRCLING	5160-1 426 (500-1)	5220-1 486 (500-1)	5320-2 586 (600-2)	5480-2½ 746 (800-2½)		

NW-1, 27 JAN 2022 to 24 FEB 2022

NW-1, 27 JAN 2022 to 24 FEB 2022