

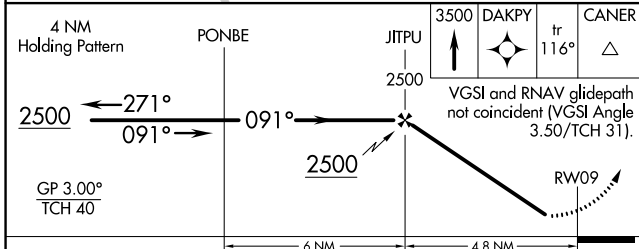
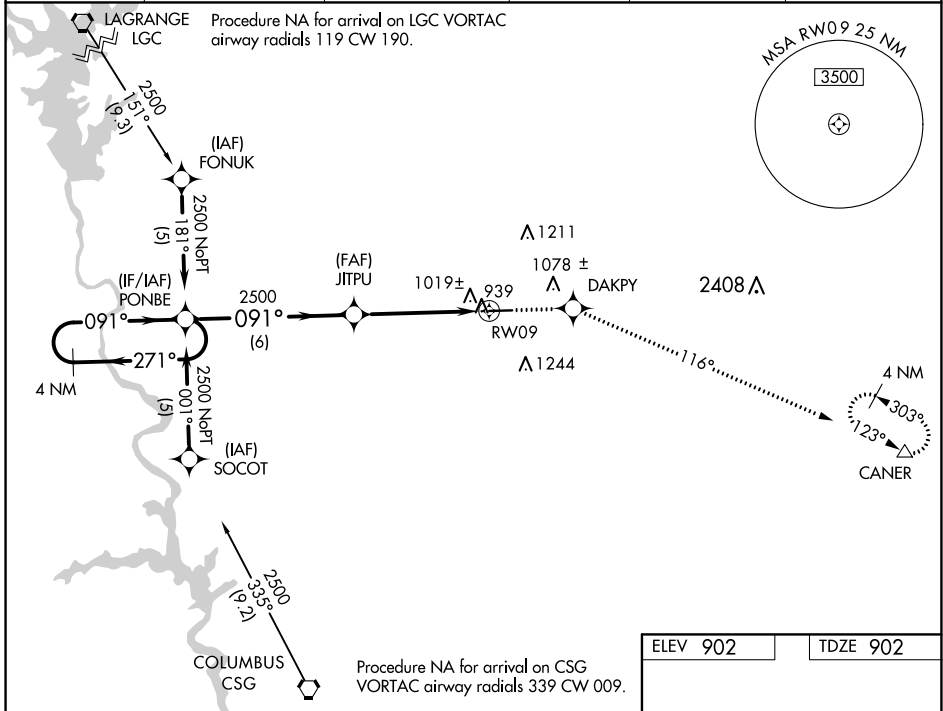
WAAS CH <b>58019</b> <b>W09A</b>	APP CRS <b>091°</b>	Rwy Idg <b>5002</b> TDZE <b>902</b> Apt Elev <b>902</b>
--	------------------------	---

# RNAV (GPS) RWY 9

HARRIS COUNTY (PIM)

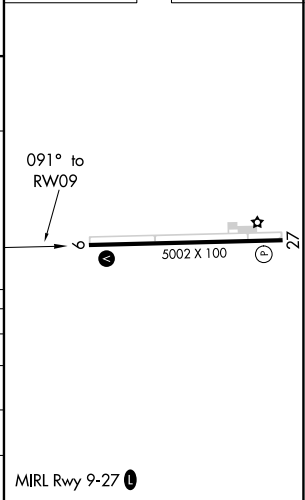
RNP APCH.	<p>When local altimeter setting not received, use LaGrange altimeter setting. Baro-VNAV NA when using LaGrange altimeter setting. Rwy 9 helicopter visibility reduction below 3/4 SM NA. Circling Rwy 27 NA at night.</p>	<p>MISSED APPROACH: Climb to 3500 direct DAKPY and on track 116° to CANER and hold.</p>
-----------	---	---

AWOS-3PT <b>120.275</b>	LGC AWOS-3 <b>126.325</b>	ATLANTA APP CON* <b>125.5 323.1</b>	CLNC DEL <b>127.7</b>	GCO <b>121.725</b>	UNICOM <b>122.8</b> (CTAF) <b>0</b>
----------------------------	------------------------------	--	--------------------------	-----------------------	--



ELEV 902	TDZE 902
----------	----------

CATEGORY	A	B	C	D
LPV DA		1217-1	315 (400-1)	
LNAV/VNAV DA		1383-1 3/4	481 (500-1 3/4)	
LNAV MDA	1400-1	498 (500-1)	1400-1 1/4 498 (500-1 1/4)	1400-1 1/2 498 (500-1 1/2)
CIRCLING	1440-1 538 (600-1)	1500-1 598 (600-1)	1660-2 1/4 758 (800-2 1/4)	1920-3 1018 (1100-3)



SE-4, 27 JAN 2022 to 24 FEB 2022

SE-4, 27 JAN 2022 to 24 FEB 2022

MIRL Rwy 9-27 **0**