

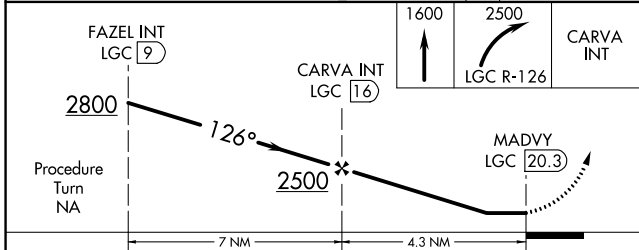
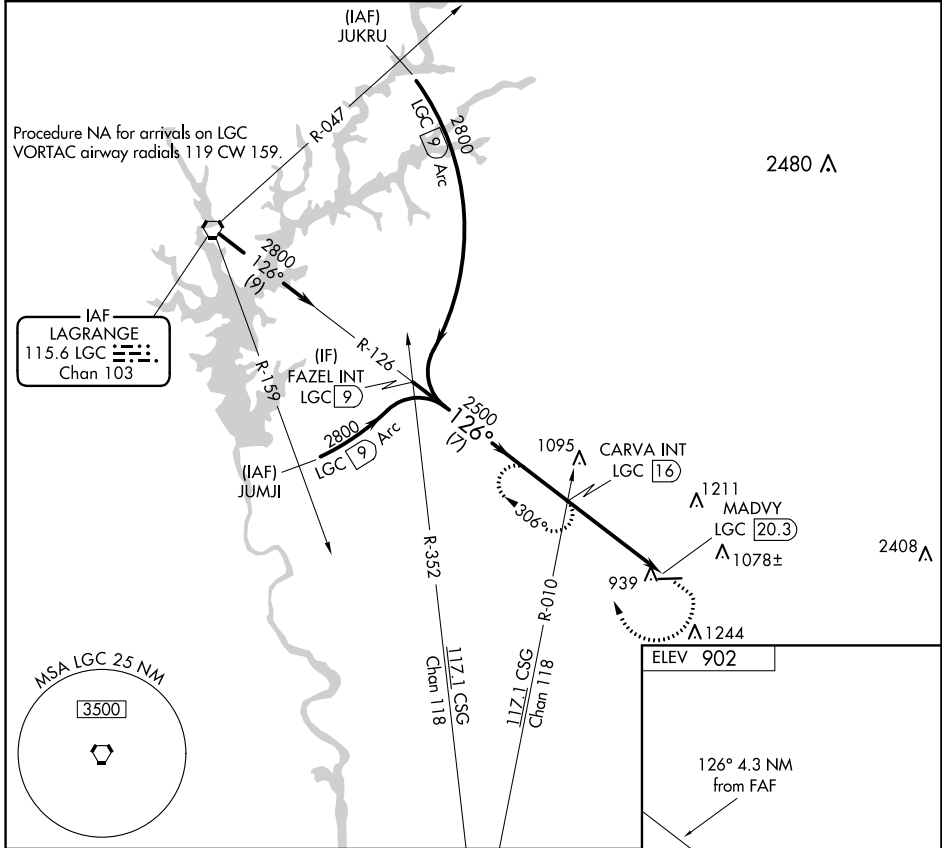
VORTAC LGC 115.6 Chan 103	APP CRS 126°	Rwy Idg TDZE Apt Elev	N/A N/A 902
---	------------------------	-----------------------------	--

VOR-A
HARRIS COUNTY (PIM)

⚠ When local altimeter setting not received, use LaGrange altimeter setting.
⚠ Circling Rwy 27 NA at night.

MISSED APPROACH: Climb to 1600 then climbing right turn to 2500 on LGC VORTAC R-126 to CARVA INT/LGC 16 DME and hold.

AWOS-3PT 120.275	LGC AWOS-3 126.325	ATLANTA APP CON* 125.5 323.1	CLNC DEL 127.7	GCO 121.725	UNICOM 122.8 (CTAF) 0
----------------------------	------------------------------	--	--------------------------	-----------------------	--



ELEV 902

126° 4.3 NM from FAF

MIRL Rwy 9-27 **0**

CATEGORY	FAF to MAP 4.3 NM			
	A	B	C	D
CIRCLING	1480-1 578 (600-1)	1500-1¼ 598 (600-1¼)	1660-2¼ 758 (800-2¼)	1920-3 1018 (1100-3)
	Knots 60 90 120 150 180			
	Min:Sec 4:18 2:52 2:09 1:43 1:26			

SE-4, 27 JAN 2022 to 24 FEB 2022

SE-4, 27 JAN 2022 to 24 FEB 2022