


LOC I-MJX 109.9	APP CRS 063°	Rwy Idg TDZE Apt Elev	5950 81 81
---------------------------	------------------------	-----------------------------	---------------------------------------

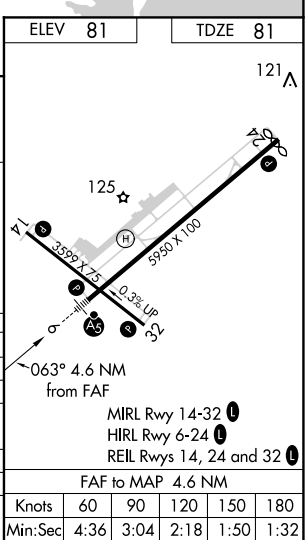
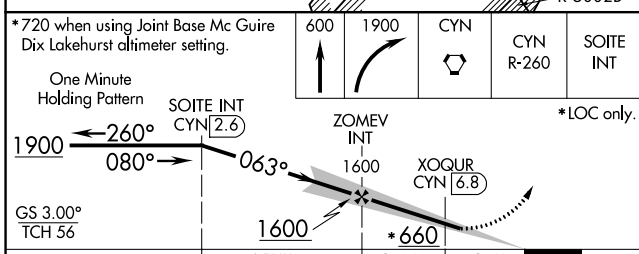
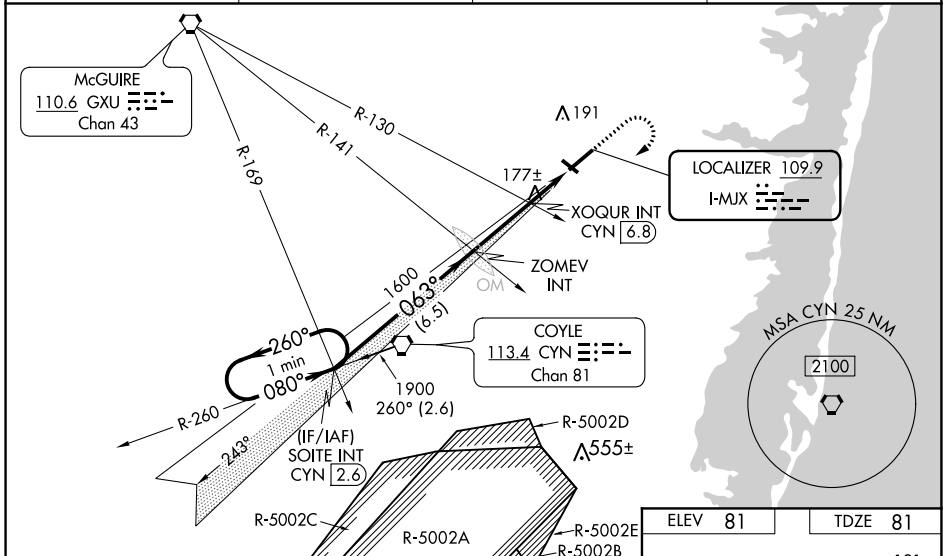
ILS or LOC RWY 6

OCEAN COUNTY (MJX)

NA Circling Rwy 14, 32 NA at night. Inop table does not apply to S-ILS 6. For inop MALSR, increase S-LOC 6 Cats A/B and S-LOC 6 XOQUR Fix minimums Cats A/B visibility to 1. When local altimeter setting not received, use Mc Guire Fld (Joint Base Mc Guire Dix Lakehurst) altimeter setting and increase all DA 41 feet and all MDA 60 feet; increase S-LOC 6 Cats C/D and Circling Cat C visibility 1/8 mile, Cat D 1/4 mile; increase XOQUR Fix minimums S-LOC 6 Cat C/D visibility 1/8 mile and Circling Cat D 1/4 mile. For inop MALSR when using Mc Guire Fld (Joint Base Mc Guire Dix Lakehurst) altimeter setting, increase S-ILS 6 all Cats visibility to 7/8 and S-LOC 6 Cats A/B and S-LOC 6 XOQUR Fix minimums Cats A/B visibility to 1, Cats C/D visibility to 1 1/8. Helicopter visibility reduction below 3/4 SM NA.

MALSRL

MISSED APPROACH:
 Climb to 600 then climbing right turn to 1900 direct CYN VORTAC then on CYN R-260 to SOITE INT/CYN 2.6 DME and hold.

AWOS-3PT 119.875	MC GUIRE APP CON 126.475 363.8	GCO 121.725	UNICOM 122.7 (CTAF) 0
----------------------------	--	-----------------------	---------------------------------



CATEGORY	A	B	C	D
S-ILS 6		331-3/4	250 (300-3/4)	
S-LOC 6	660-3/4	579 (600-3/4)	660-1 1/4	579 (600-1 1/4)
C CIRCLING	660-1	579 (600-1)	660-1 3/4	700-2
			579 (600-1 3/4)	619 (700-2)
XOQUR FIX MINIMUMS (DUAL VOR RECEIVERS or DME REQUIRED)				
S-LOC 6	520-3/4	439 (500-3/4)	520-7/8	439 (500-7/8)
C CIRCLING	520-1	560-1	580-1 1/2	700-2
	439 (500-1)	479 (500-1)	499 (500-1 1/2)	619 (700-2)

NE-2, 27 JAN 2022 to 24 FEB 2022

NE-2, 27 JAN 2022 to 24 FEB 2022

FAF to MAP 4.6 NM	Knots	60	90	120	150	180
	Min:Sec	4:36	3:04	2:18	1:50	1:32