

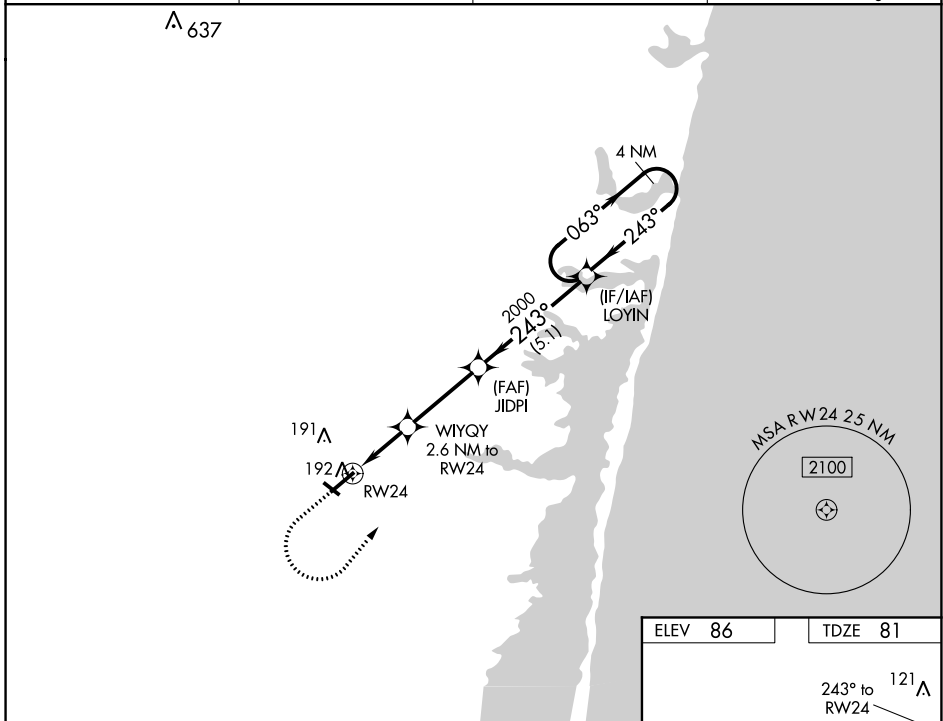
WAAS CH 86433 W24A	APP CRS 243°	Rwy Idg TDZE Apt Elev	5834 81 86
--	------------------------	-----------------------------	---------------------------------------

RNAV (GPS) RWY 24

OCEAN COUNTY (MJX)

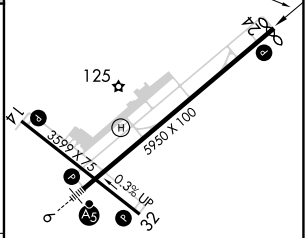
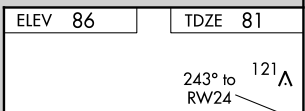
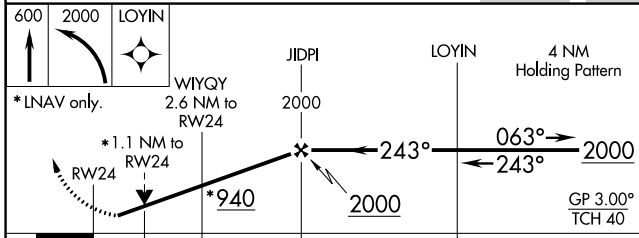
RNP APCH.		MISSED APPROACH: Climb to 600 then climbing left turn to 2000 direct to LOYIN and hold.	
<p>▼ Circling Rwy 14, 32 NA at night. For uncompensated Baro-VNAV systems, LNAV/VNAV NA below -15°C or above 43°C. Rwy 24 helicopter visibility reduction below 3/4 SM NA.</p>			

AWOS-3PT 119.875	MC GUIRE APP CON 126.475 363.8	GCO 121.725	UNICOM 122.7 (CTAF)
----------------------------	--	-----------------------	-------------------------------



NE-2, 27 JAN 2022 to 24 FEB 2022

NE-2, 27 JAN 2022 to 24 FEB 2022



CATEGORY	A	B	C	D
LPV DA		331-3/4	250 (300-3/4)	
LNAV/VNAV DA		358-7/8	277 (300-7/8)	
LNAV MDA		460-1	379 (400-1)	
Ⓢ CIRCLING	540-1 454 (500-1)	560-1 474 (500-1)	580-1 1/2 494 (500-1 1/2)	700-2 614 (700-2)

MIRL Rwy 14-32
HIRL Rwy 6-24
REIL Rwys 14, 24 and 32