

VORTAC CYN	APP CRS	Rwy Idg	5950
113.4	054°	TDZE	81
Chan 81		Apt Elev	81

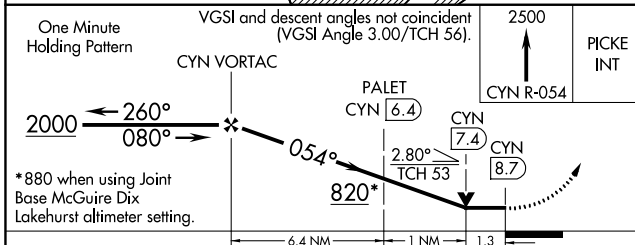
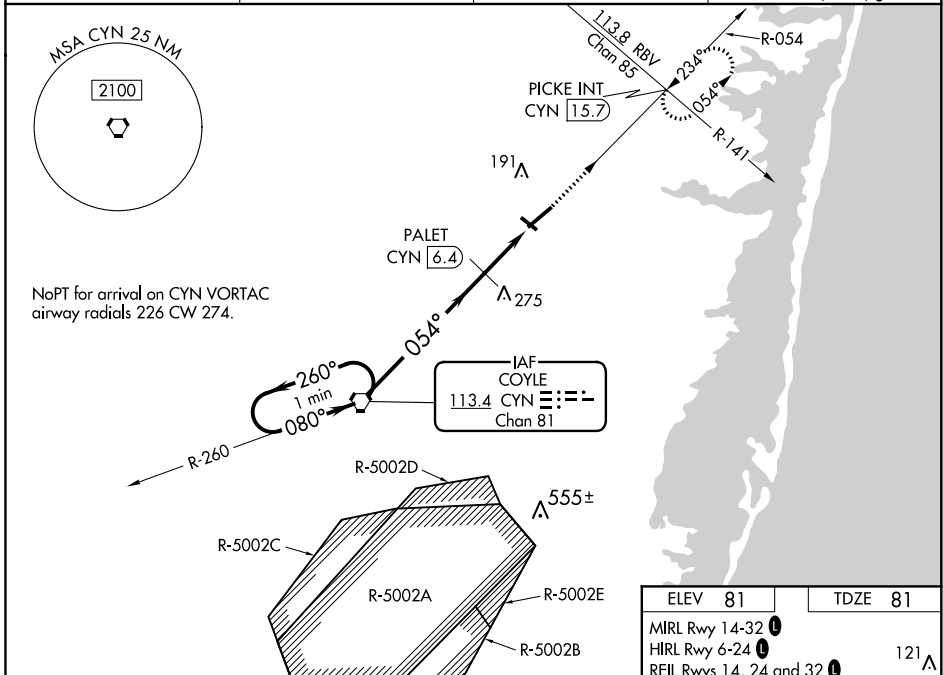
VOR RWY 6

OCEAN COUNTY (MJJX)

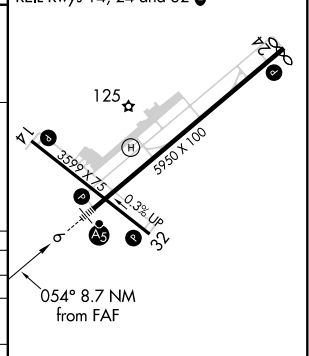
NA Circling Rwy 14, 32 NA at night. For inop MALSR, increase S-6 Cat A visibility to 1, S-6 Cats C/D visibility to 2, and PALET Fix Minimums S-6 Cats A/B visibility to 1. When local altimeter setting not received, use Mc Guire Fld (Joint Base Mc Guire Dix Lakehurst) altimeter setting and increase all MDA 60 feet; increase S-6 Cats C/D visibility 1/8 mile, Circling Cat C visibility 1/2 mile, and Circling Cat D visibility 1/4 mile; increase PALET Fix Minimums Circling Cat D visibility 1/4 mile. For inop MALSR when using Mc Guire Fld (Joint Base Mc Guire Dix Lakehurst) altimeter setting, increase S-6 Cat A visibility to 1, Cats C/D visibility to 2 1/2, and PALET Fix Minimums Cats A/B visibility to 1. Helicopter visibility reduction below 3/4 SM NA. VDP NA when using Mc Guire Fld (Joint Base Mc Guire Dix Lakehurst) altimeter setting.

MALSR MISSED APPROACH: Climb to 2500 on CYN R-054 to PICKE INT/CYN 15.7 DME and hold.

AWOS-3PT	MC GUIRE APP CON	GCO	UNICOM
119.875	126.475 363.8	121.725	122.7 (CTAF) U



ELEV 81	TDZE 81
MIRL Rwy 14-32 U	121 A
HIRL Rwy 6-24 U	
REIL Rwy 14, 24 and 32 U	



CATEGORY	A	B	C	D
S-6	820-3/4	739 (800-3/4)	820-1 1/4	739 (800-1 1/4)
C CIRCLING	820-1	739 (800-1)	820-2	739 (800-2)
PALET FIX MINIMUMS				
S-6	540-3/4	459 (500-3/4)	540-1	459 (500-1)
C CIRCLING	540-1	459 (500-1)	580-1 1/2	459 (500-1 1/2)
	459 (500-1)	479 (500-1)	619 (700-2)	619 (700-2)

FAF to MAP 8.7 NM					
Knots	60	90	120	150	180
Min:Sec	8:42	5:48	4:21	3:29	2:54

NE-2, 27 JAN 2022 to 24 FEB 2022

NE-2, 27 JAN 2022 to 24 FEB 2022