

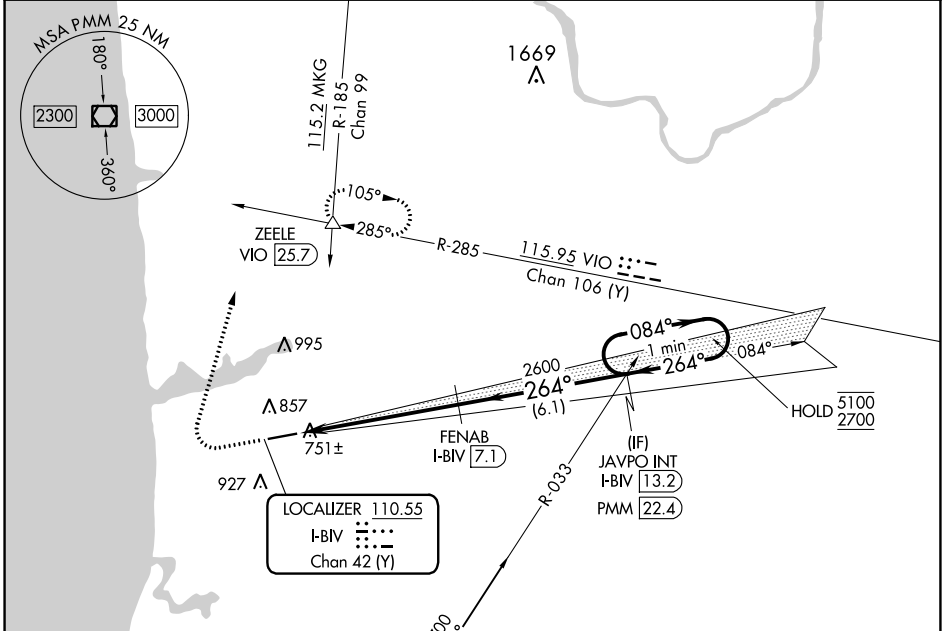
LOC/DME I-BIV <b>110.55</b> Chan 42 (Y)	APP CRS <b>264°</b>	Rwy Idg TDZE Apt Elev	<b>6002</b> <b>686</b> <b>698</b>
---	------------------------	-----------------------------	---

# ILS or LOC RWY 26

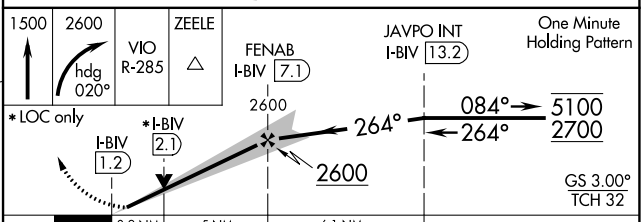
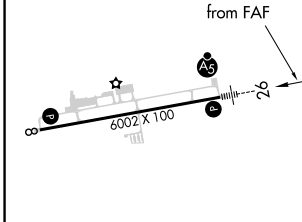
WEST MICHIGAN RGNL (BIV)

DME required.	MALSR 	MISSED APPROACH: Climb to 1500 then climbing right turn to 2600 on heading 020° and VIO VOR/DME R-285 to ZEELE/VIO 25.7 DME and hold.
---------------	-----------	---

ASOS <b>119.025</b>	GREAT LAKES APP CON* <b>133.825 290.35</b>	CLNC DEL <b>123.95</b>	UNICOM <b>123.05 (CTAF)</b>
------------------------	---	---------------------------	--------------------------------



ELEV 698	TDZE 686
----------	----------



CATEGORY	A	B	C	D
S-ILS 26	886-1/2		200 (200-1/2)	NA
S-LOC 26	1020-1/2		334 (400-1/2)	NA
CIRCLING	1200-1 502 (600-1)	1240-1 542 (600-1)	1240-1 1/2 542 (600-1 1/2)	NA

EC-1, 27 JAN 2022 to 24 FEB 2022

EC-1, 27 JAN 2022 to 24 FEB 2022