

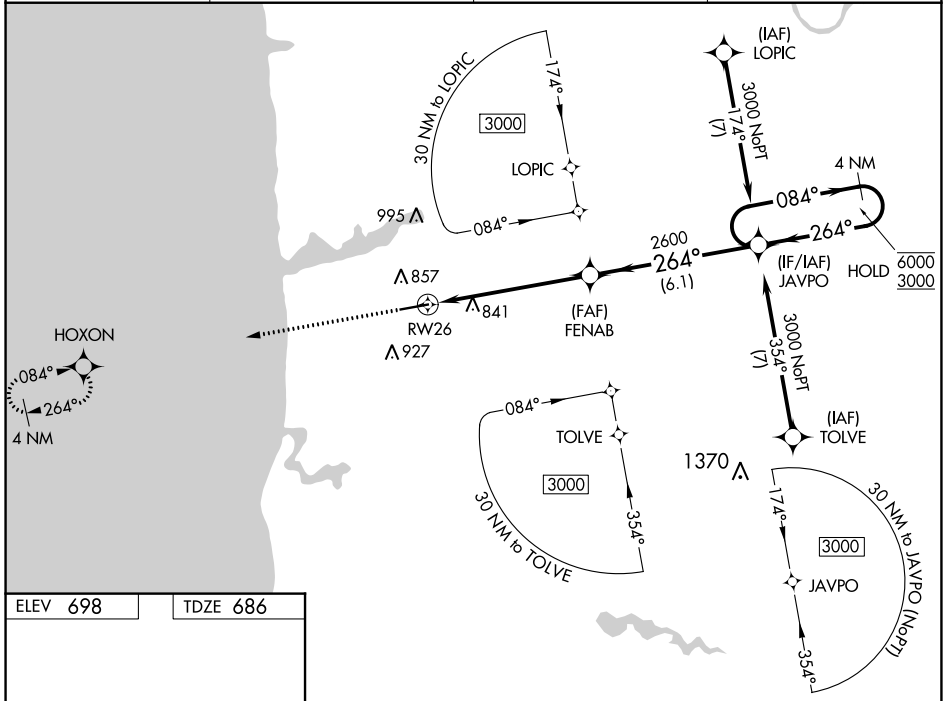
WAAS CH 53402 W26A	APP CRS 264°	Rwy Idg TDZE Apt Elev	6002 686 698
--	------------------------	-----------------------------	---

RNAV (GPS) RWY 26

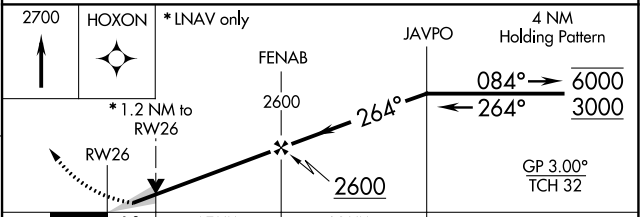
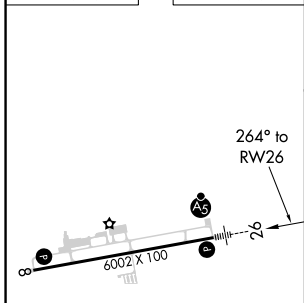
WEST MICHIGAN RGNL (BIV)

RNP APCH.	MALSR	MISSED APPROACH: Climb to 2700 direct HOXON and hold.
<p>▽ For uncompensated Baro-VNAV systems, LNAV/VNAV NA below -16°C or above 54°C.</p> <p>▲ For inoperative ALS, increase LNAV/VNAV all Cats visibility to 1 SM; increase LNAV Cat C visibility to 1 1/8 SM.</p>		

ASOS 119.025	GREAT LAKES APP CON* 133.825 290.35	CLNC DEL 123.95	UNICOM 123.05 (CTAF) 0
------------------------	---	---------------------------	---



ELEV 698	TDZE 686
----------	----------



2700	HOXON	*LNAV only	JAVPO	4 NM Holding Pattern
		*1.2 NM to RWY 26		
				GP 3.00° TCH 32
CATEGORY	A	B	C	D
LPV DA	886-1/2	200 (200-1/2)		NA
LNAV/VNAV DA	1040-5/8	354 (400-5/8)		NA
LNAV MDA	1100-1/2	414 (500-1/2)	1100-3/4 414 (500-3/4)	NA
C CIRCLING	1200-1 502 (600-1)	1240-1 542 (600-1)	1240-1 1/2 542 (600-1 1/2)	NA

REIL Rwy 8 **0**
HIRL Rwy 8-26 **0**
HOLLAND, MICHIGAN
Amdt 4 26MAR20

42°45'N-86°06'W

RNAV (GPS) RWY 26

WEST MICHIGAN RGNL (BIV)

EC-1, 27 JAN 2022 to 24 FEB 2022

EC-1, 27 JAN 2022 to 24 FEB 2022