

WAAS CH <b>49222</b> <b>W08A</b>	APP CRS <b>084°</b>	Rwy Idg TDZE Apt Elev	<b>6002</b> <b>698</b> <b>698</b>
--	------------------------	-----------------------------	---

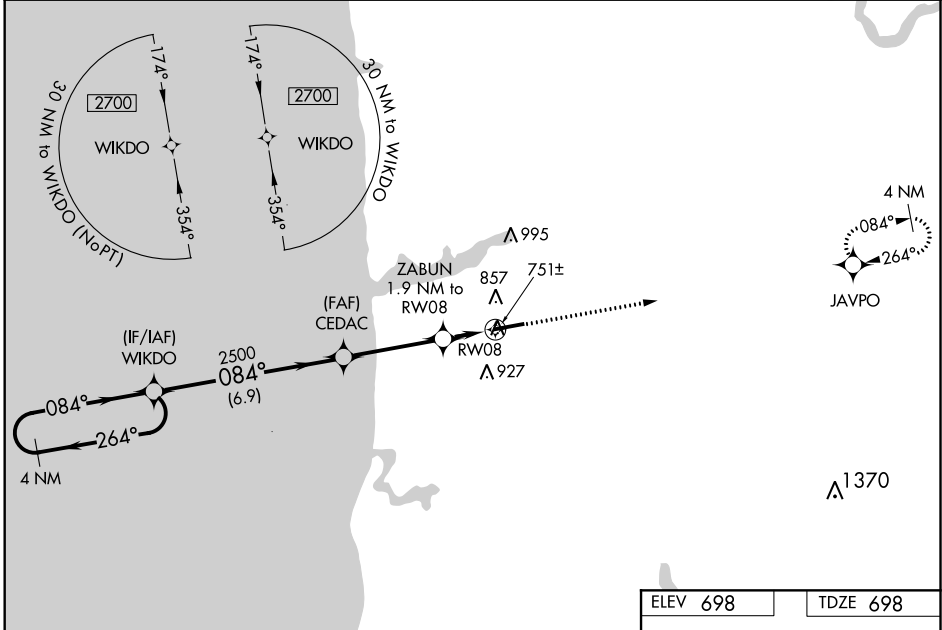
# RNAV (GPS) RWY 8

WEST MICHIGAN RGNL (BIV)

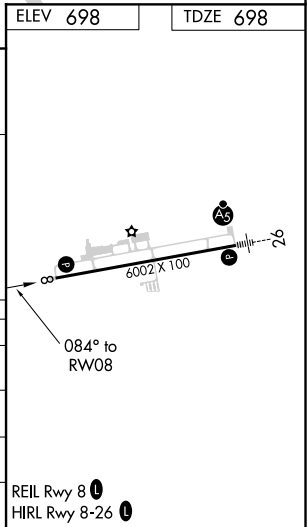
▼ Baro-VNAV NA when using Muskegon County altimeter setting. For uncompensated Baro-VNAV systems, LNAV/VNAV NA below -16°C (4°F) or above 54°C (130°F). When local altimeter setting not received, use Muskegon County altimeter setting and increase LPV DA to 1018 feet, increase LPV all Cats visibility ¼ SM; increase LNAV/VNAV DA to 1050 feet, increase LNAV/VNAV all Cats visibility ⅓ SM; increase all MDA 80 feet, increase LNAV Cat C/D visibility ⅓ SM and Circling Cats C/D visibility ¼ SM. DME/DME RNP-0.3 NA. VDP NA when using Muskegon County altimeter setting.

MISSED APPROACH:  
Climb to 3000 direct  
JAVPO and hold.

ASOS <b>119.025</b>	GREAT LAKES APP CON ★ <b>133.825 290.35</b>	CLNC DEL <b>123.95</b>	UNICOM <b>123.05 (CTAF) 0</b>
------------------------	--	---------------------------	----------------------------------



4 NM Holding Pattern	WIKDO	*LNAV only		3000	JAVPO																									
2700 ← 264°	→ 084°	084°	2500	2500	1340																									
GP 3.00°	TCH 40	6.9 NM	3.6 NM	0.9 NM	1 NM																									
CEDAC	ZABUN	RWY 8																												
2500	2500	1.9 NM to RWY 8	1 NM to RWY 8																											
<table border="1"> <thead> <tr> <th>CATEGORY</th> <th>A</th> <th>B</th> <th>C</th> <th>D</th> </tr> </thead> <tbody> <tr> <td>LPV DA</td> <td></td> <td>948- 7/8</td> <td>250 (300- 7/8)</td> <td></td> </tr> <tr> <td>LNAV/VNAV DA</td> <td></td> <td>980- 7/8</td> <td>282 (300- 7/8)</td> <td></td> </tr> <tr> <td>LNAV MDA</td> <td></td> <td>1060-1</td> <td>362 (400-1)</td> <td></td> </tr> <tr> <td>CIRCLING</td> <td>1200-1 502 (600-1)</td> <td>1240-1 542 (600-1)</td> <td>1240-1½ 542 (600-1½)</td> <td>1320-2 622 (700-2)</td> </tr> </tbody> </table>						CATEGORY	A	B	C	D	LPV DA		948- 7/8	250 (300- 7/8)		LNAV/VNAV DA		980- 7/8	282 (300- 7/8)		LNAV MDA		1060-1	362 (400-1)		CIRCLING	1200-1 502 (600-1)	1240-1 542 (600-1)	1240-1½ 542 (600-1½)	1320-2 622 (700-2)
CATEGORY	A	B	C	D																										
LPV DA		948- 7/8	250 (300- 7/8)																											
LNAV/VNAV DA		980- 7/8	282 (300- 7/8)																											
LNAV MDA		1060-1	362 (400-1)																											
CIRCLING	1200-1 502 (600-1)	1240-1 542 (600-1)	1240-1½ 542 (600-1½)	1320-2 622 (700-2)																										



EC-1, 27 JAN 2022 to 24 FEB 2022

EC-1, 27 JAN 2022 to 24 FEB 2022