

WAAS CH 45836 W22A	APP CRS 223°	Rwy Idg TDZE Apt Elev	4504 90 92
--	------------------------	-----------------------------	---------------------------------------

RNAV (GPS) RWY 22

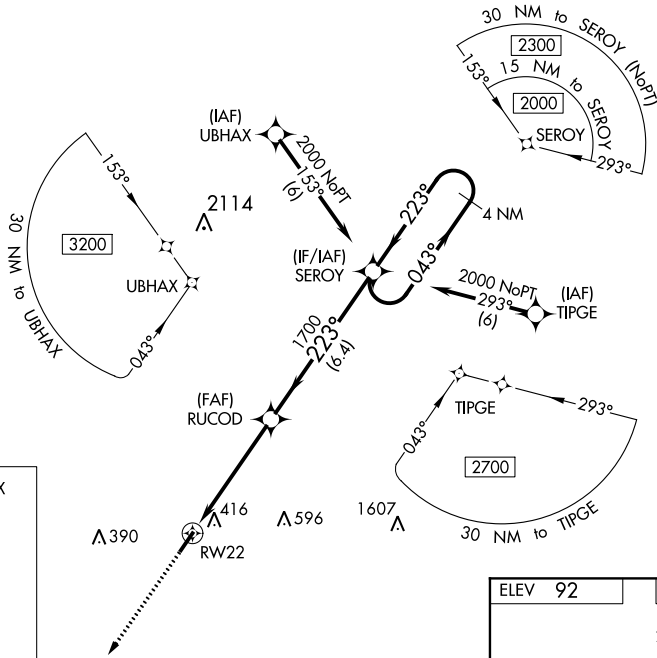
MARION COUNTY (M.A.O)



Baro-VNAV NA when using Florence altimeter setting. For uncompensated Baro-VNAV systems, LNAV/VNAV NA below -8°C (18°F) or above 54°C (130°F). DME/DME RNP-0.3 NA. Helicopter visibility reduction below ¼ SM NA. When local altimeter setting not received, use Florence altimeter setting and increase all DA 53 feet and all visibilities ¼ mile, increase all MDA 60 feet and all Cat C/D visibilities ¼ mile.

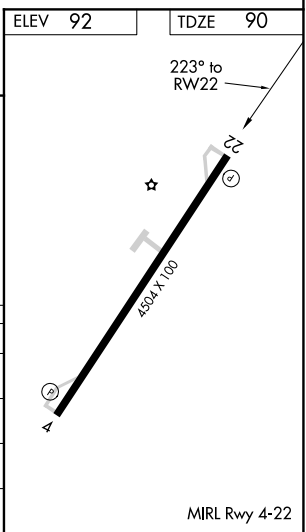
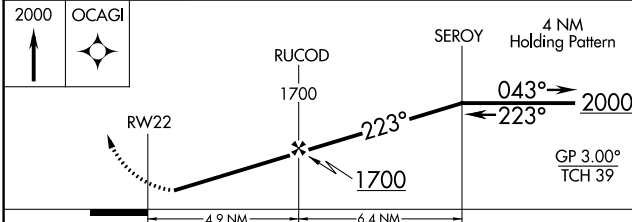
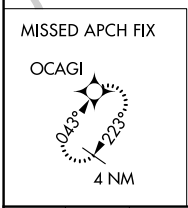
MISSED APPROACH:
Climb to 2000 direct
OCAGI and hold.

AWOS-3 119.875	FLORENCE APP CON ★ 135.25 316.15	UNICOM 122.8 (CTAF)
--------------------------	--	-------------------------------



SE-2, 27 JAN 2022 to 24 FEB 2022

SE-2, 27 JAN 2022 to 24 FEB 2022



CATEGORY	A	B	C	D
LPV DA	396-1		306 (400-1)	
LNAV/VNAV DA	577-1 ⁵ / ₈		487 (500-1 ⁵ / ₈)	
LNAV MDA	680-1	590 (600-1)	680-1 ³ / ₄	590 (600-1 ³ / ₄)
CIRCLING	720-1	628 (700-1)	720-1 ³ / ₄ 628 (700-1 ³ / ₄)	960-2 ³ / ₄ 868 (900-2 ³ / ₄)