

VORTAC FLO 115.2 Chan 99	APP CRS 104°	Rwy Idg TDZE Apt Elev	N/A N/A 92
--	------------------------	-----------------------------	---------------------------------------

VOR/DME-A
MARION COUNTY (MAO)

⚠ When local altimeter setting not received, use Florence altimeter setting and increase all MDA 60 feet. Increase Cat C/D visibility ¼ mile.

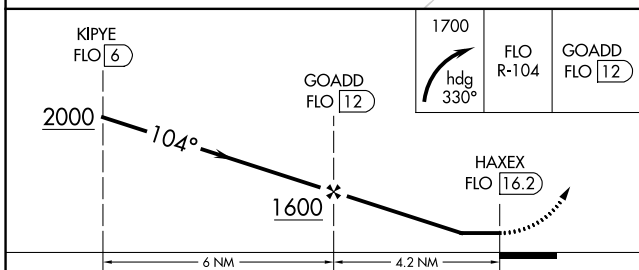
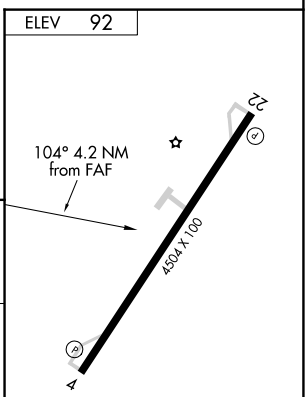
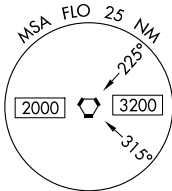
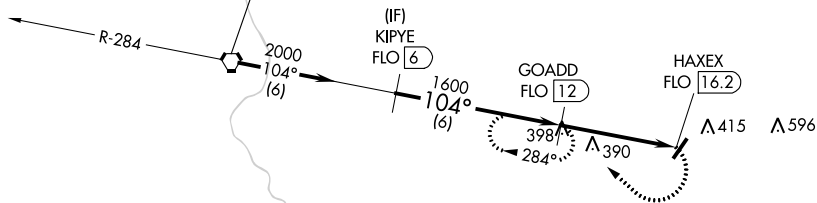
MISSED APPROACH: Climbing right turn to 1700 on heading 330° and on FLO VORTAC R-104 to GOADD/FLO 12 DME and hold.

AWOS-3 119.875	FLORENCE APP CON * 135.25 316.15	UNICOM 122.8 (CTAF)
--------------------------	--	-------------------------------

Procedure NA for arrivals on FLO VORTAC airway radials 088 CW 121.

△2114

IAF
FLORENCE
115.2 FLO
Chan 99



CATEGORY	A	B	C	D
C CIRCLING	720-1	628 (700-1)	720-1¾ 628 (700-1¾)	960-2¾ 868 (900-2¾)

MIRL Rwy 4-22

SE-2, 27 JAN 2022 to 24 FEB 2022

SE-2, 27 JAN 2022 to 24 FEB 2022